

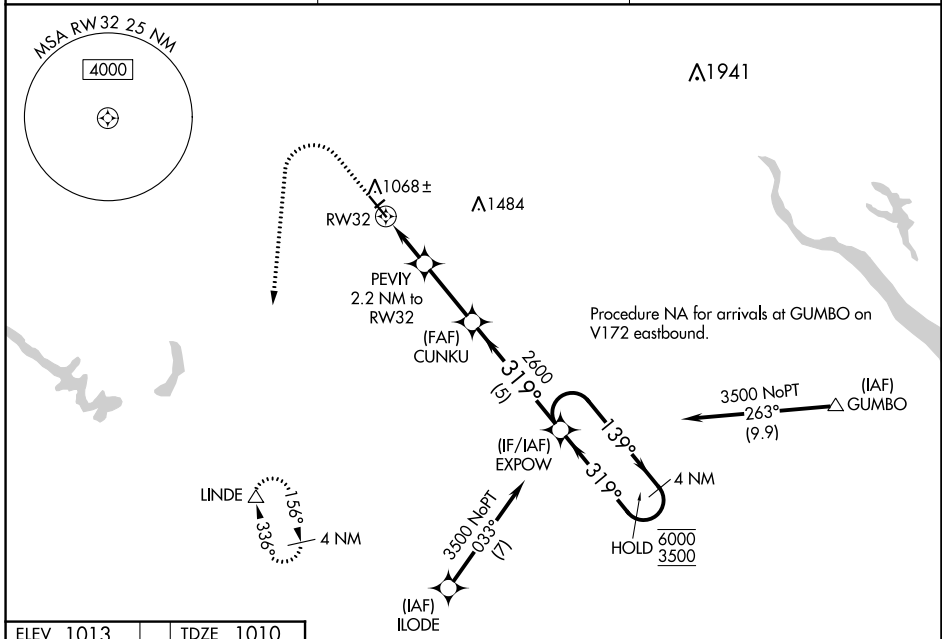
WAAS CH 53345 W32A	APP CRS 319°	Rwy Idg TDZE Apt Elev	5500 1010 1013
--	------------------------	-----------------------------	---

RNAV (GPS) RWY 32

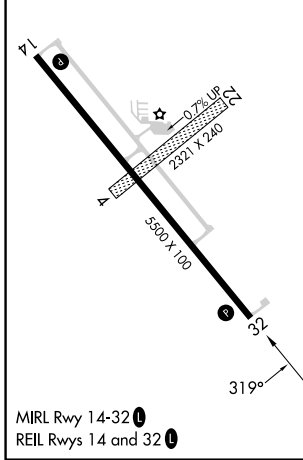
PERRY MUNI (P.R.O)

RNP APCH - GPS.	MISSED APPROACH: Climb to 1500 then climbing left turn to 3500 direct LINDE and hold.
<p>⚠ Circling NA to Rwy's 4 and 22. For uncompensated Baro-VNAV systems, LNAV/VNAV NA below -17°C or above 54°C.</p>	

AWOS-3 118.0	DES MOINES APP CON 123.9 360.7	UNICOM 122.8 (CTAF) 0
------------------------	--	---------------------------------



ELEV 1013	TDZE 1010
-----------	-----------



1500	3500	LINDE	VGSI and RNAV glidepath not coincident (VGSI Angle 2.83/TCH 31).	EXPOW	4 NM Holding Pattern
		PEVIY 2.2 NM to RWY32	CUNKU 2600	EXPW	4 NM Holding Pattern
		1.2 NM to RWY32	1740	319°	6000
			2600	319°	3500
					GP 3.00°
					TCH 40
CATEGORY	A	B	C	D	
LPV DA		1260-3/4	250 (300-3/4)		
LNAV/VNAV DA		1310-7/8	300 (300-7/8)		
LNAV MDA		1380-1	370 (400-1)		
C CIRCLING	1440-1 427 (500-1)	1480-1 467 (500-1)	1600-1 1/2 587 (600-1 1/2)	1840-2 3/4 827 (900-2 3/4)	

NC-3, 28 NOV 2024 to 26 DEC 2024

NC-3, 28 NOV 2024 to 26 DEC 2024