

WAAS CH 56504 W 36A	APP CRS 356°	Rwy Idg 4403 TDZE 918 Apt Elev 918
---	------------------------	---

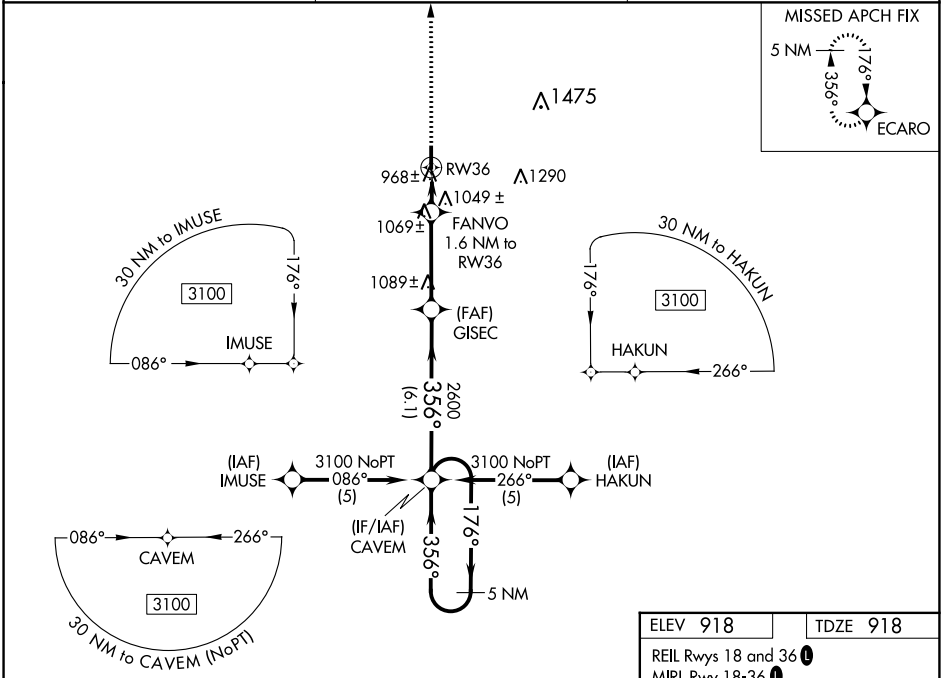
RNAV (GPS) RWY 36

FORT SCOTT MUNI (F'SK)

NA When local altimeter setting not received, use Chanute altimeter setting and increase all DAs 93 feet and all MDAs 100 feet; increase Circling Cat C/D visibility 1/2 SM. Baro-VNAV NA when using Chanute altimeter setting. For uncompensated Baro-VNAV systems, LNAV/VNAV NA below -1.6°C (4°F) or above 47°C (116°F). DME/DME RNP-0.3 NA. Visibility reduction by helicopters NA.

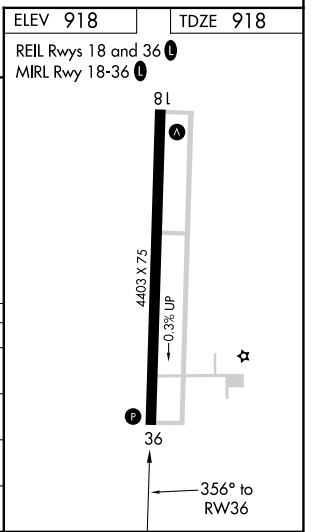
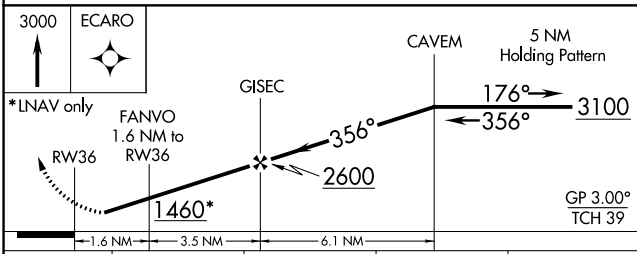
MISSED APPROACH: Climb to 3000 direct ECARO and hold.

AWOS-3P 124.425	KANSAS CITY CENTER 125.55 327.0	UNICOM 122.8 (CTAF)
---------------------------	---	-------------------------------



NC-2, 28 NOV 2024 to 26 DEC 2024

NC-2, 28 NOV 2024 to 26 DEC 2024



CATEGORY	A	B	C	D
LPV DA	1189-1 271 (300-1)			
LNAV/VNAV DA	1240-1 1/4 322 (400-1 1/4)			
LNAV MDA	1320-1 402 (500-1)	1320-1 1/4 402 (500-1 1/4)		
CIRCLING	1320-1 402 (500-1)	1380-1 462 (500-1)	1640-2 722 (800-2)	1640-2 1/4 722 (800-2 1/4)