

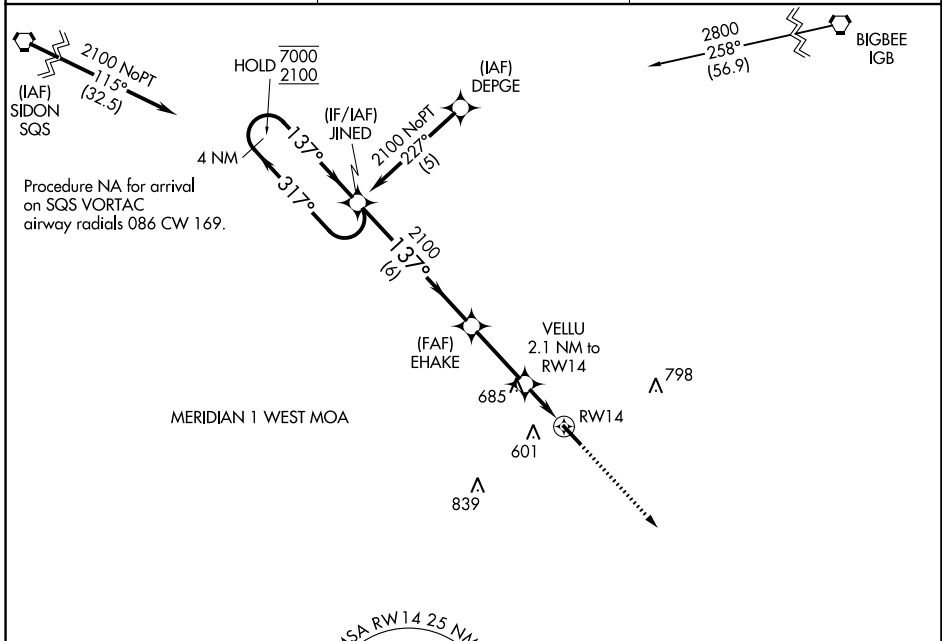
APP CRS	Rwy Idg	5009
137°	TDZE	494
	Apt Elev	494

RNAV (GPS) RWY 14

KOSCIUSKO-ATTALA COUNTY (OSX)

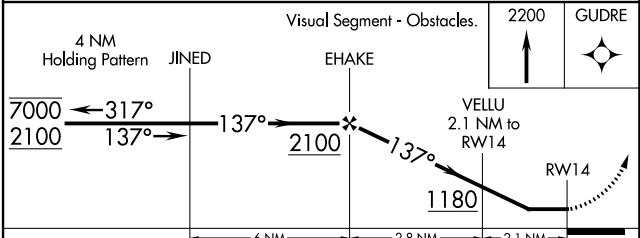
RNP APCH - GPS.	MISSED APPROACH: Climb to 2200 direct GUDRE and hold.
<p>▼ Rwy 14 helicopter visibility reduction below 1 SM NA. Procedure NA at night. Use Philadelphia altimeter setting; when not received, use Greenwood altimeter setting and increase all MDAs 80 feet, increase visibility LNAV Cat C ¼ SM and Circling Cat C ¾ SM.</p> <p>▲ NA</p>	

MPE AWOS-3P 118.725	MEMPHIS CENTER 132.75 263.0	CTAF 122.9
-------------------------------	---------------------------------------	----------------------



ELEV 494	TDZE 494
----------	----------

MRL Rwy 14-32



CATEGORY	A	B	C	D
LNAV MDA	1020-1	526 (600-1)	1020-1½ 526 (600-1½)	NA
CIRCLING	1020-1	526 (600-1)	1160-1¾ 666 (700-1¾)	NA

SC-4, 28 NOV 2024 to 26 DEC 2024

SC-4, 28 NOV 2024 to 26 DEC 2024