

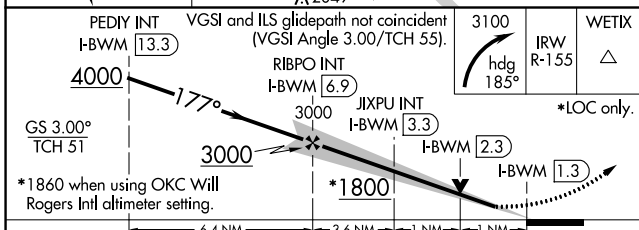
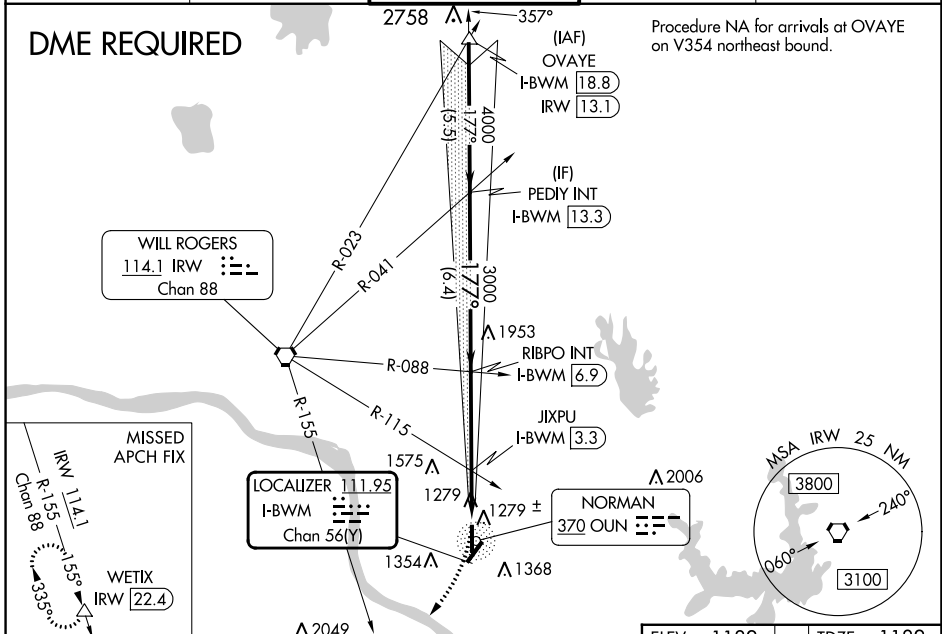
LOC/DME I-BWMM 111.95 Chan 56(Y)	APP CRS 177°	Rwy Idg 5199 TDZE 1182 Apt Elev 1182
--	------------------------	---

ILS or LOC RWY 18

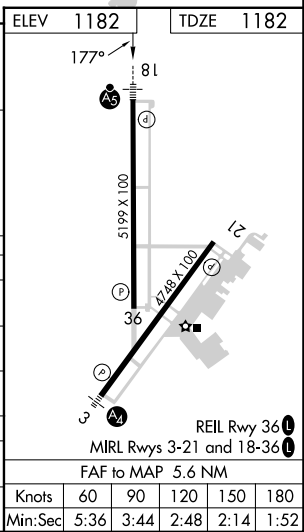
UNIVERSITY OF OKLAHOMA WESTHEIMER (OUN)

	MALSR 	MISSED APPROACH: Climbing right turn to 3100 on heading 185° and IRW VORTAC R-155 to WETIX/IRW VORTAC 22.4 DME and hold.

AWOS-3PT 119.55	OKE CITY APP CON 120.45 288.325	WESTHEIMER TOWER ★ 118.0 (CTAF)	GND CON 121.6	UNICOM 122.95
---------------------------	---	---	-------------------------	-------------------------



CATEGORY	A	B	C	D
S-ILS 18		1382-1/2	200 (200-1/2)	
S-LOC 18	1800-1/2	618 (700-1/2)	1800-13/8	618 (700-13/8)
CIRCLING	1800-1	618 (700-1)	1940-2 1/4 758 (800-2 1/4)	1940-2 1/2 758 (800-2 1/2)
JXPU FIX MINIMUMS (DUAL VOR RECEIVERS OR DME REQUIRED)				
S-LOC 18	1540-1/2	358 (400-1/2)	1540-5/8	358 (400-5/8)
CIRCLING	1660-1	478 (500-1)	1940-2 1/4 758 (800-2 1/4)	1940-2 1/2 758 (800-2 1/2)



SC-1, 28 NOV 2024 to 26 DEC 2024

SC-1, 28 NOV 2024 to 26 DEC 2024