

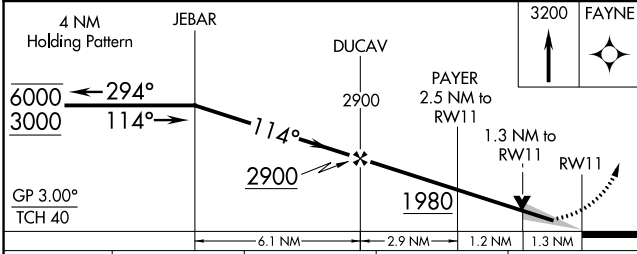
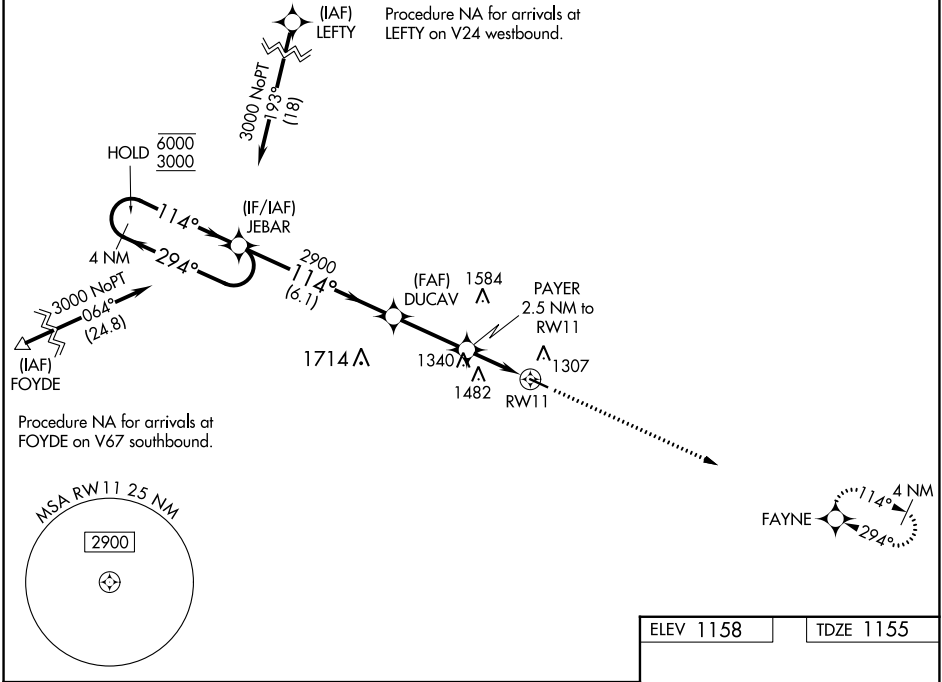
WAAS CH 78021 W11A	APP CRS 114°	Rwy Idg 4001 TDZE 1155 Apt Elev 1158
--	------------------------	---

RNAV (GPS) RWY 11

DECORAH MUNI (DEH)

RNP APCH - GPS.	MISSED APPROACH: Climb to 3200 direct FAYNE and hold.
<p>▼ For uncompensated Baro-VNAV systems, LNAV/VNAV NA below -17°C or above 54°C.</p>	

AWOS-3 120.925	MINNEAPOLIS CENTER 118.85	UNICOM 122.8 (CTAF) 0
--------------------------	-------------------------------------	--



ELEV 1158	TDZE 1155
-----------	-----------

3200 FAYNE

114°

0.3% UP

4001 X 75

128

REIL Rwy 11 and 29 **0**

MIRL Rwy 11-29 **0**

CATEGORY	A	B	C	D
LPV DA	1405-1	250 (300-1)		NA
LNAV/VNAV DA	1405-1	250 (300-1)		NA
LNAV MDA	1600-1	445 (500-1)		NA
C CIRCLING	1620-1	462 (500-1)		NA

NC-3, 28 NOV 2024 to 26 DEC 2024

NC-3, 28 NOV 2024 to 26 DEC 2024