

APP CRS	Rwy Idg	4001
294°	TDZE	1158
	Apt Elev	1158

RNAV (GPS) RWY 29

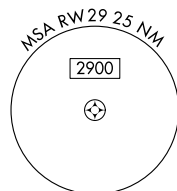
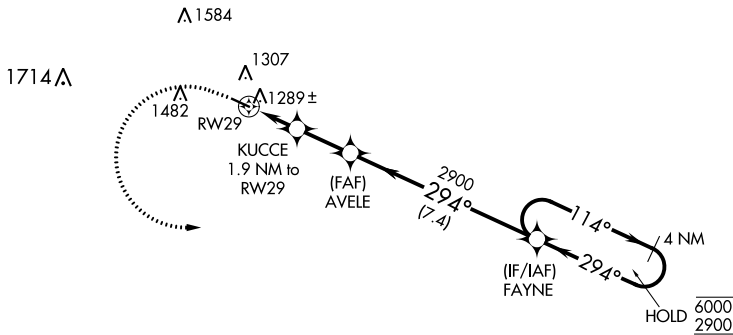
DECORAH MUNI (DEH)

RNP APCH - GPS.

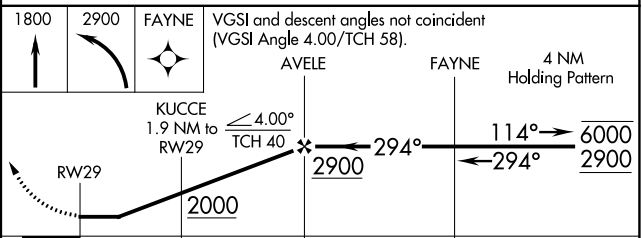
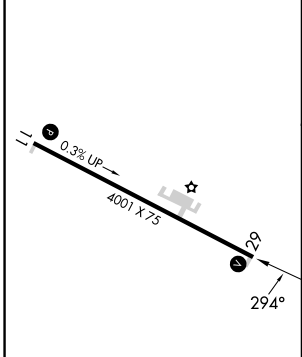
▽
▲ Rwy 29 helicopter visibility reduction below 1 SM NA.

MISSED APPROACH: Climb to 1800 then climbing left turn to 2900 direct FAYNE and hold.

AWOS-3 120.925	MINNEAPOLIS CENTER 118.85	UNICOM 122.8 (CTAF) 0
--------------------------	-------------------------------------	---------------------------------



ELEV 1158	TDZE 1158
-----------	-----------



VECTORS	1800	2900	FAYNE	VGSI and descent angles not coincident (VGSI Angle 4.00°/TCH 58).	4 NM Holding Pattern
			AVELE	FAYNE	
		KUCCE 1.9 NM to RWY 29	2900	294°	114° → 6000 / 2900
		2000	2900	← 294°	
		1.9 NM	2.1 NM	7.4 NM	
CATEGORY	A	B	C	D	
LNAV MDA	1540-1	382 (400-1)	NA		
C CIRCLING	1620-1	462 (500-1)	NA		

REIL Rwy 11 and 29 **0**
MIRL Rwy 11-29 **0**

NC-3, 28 NOV 2024 to 26 DEC 2024

NC-3, 28 NOV 2024 to 26 DEC 2024