

WAAS CH 78415 W18A	APP CRS 185°	Rwy Idg TDZE 1197 Apt Elev 1197
----------------------------------------	------------------------	-----------------------------------------------------

RNAV (GPS) RWY 18

LE MARS MUNI (L.R.J)

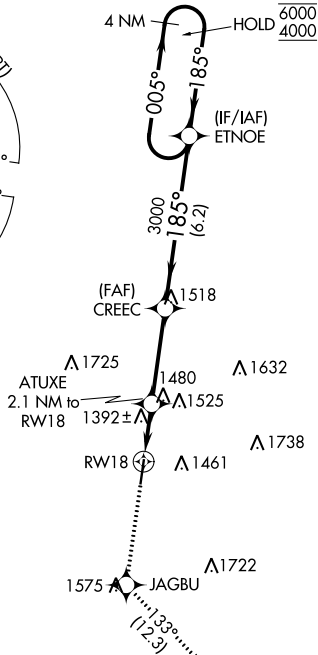
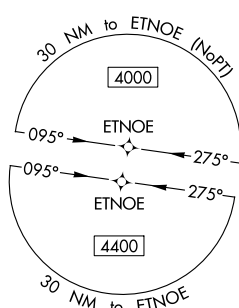
RNP APCH.
 Rwy 18 helicopter visibility reduction below 3/4 SM NA.
 For uncompensated Baro-VNAV systems, LNAV/VNAV NA below -17°C or above 54°C.
 -24°C

MISSED APPROACH: Climb to 4500 direct JAGBU and on track 133° to FEXAT and hold.

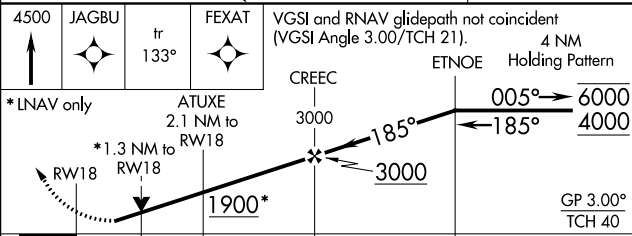
AWOS-3P
120.975

SIOUX CITY APP CON *
124.6 307.0

UNICOM
122.8 (CTAF) 0



ELEV 1197 TDZE 1197



CATEGORY	A	B	C	D
LPV DA	1479-1 282 (300-1)			NA
LNAV/VNAV DA	1691-1 3/8 494 (500-1 3/8)			NA
LNAV MDA	1660-1 463 (500-1)	1660-1 3/8 463 (500-1 3/8)		NA
CIRCLING	1760-1 563 (600-1)	1780-1 583 (600-1)	1840-1 3/4 643 (700-1 3/4)	NA

MIRL Rwy 18-36
REIL Rwy 18 and 36