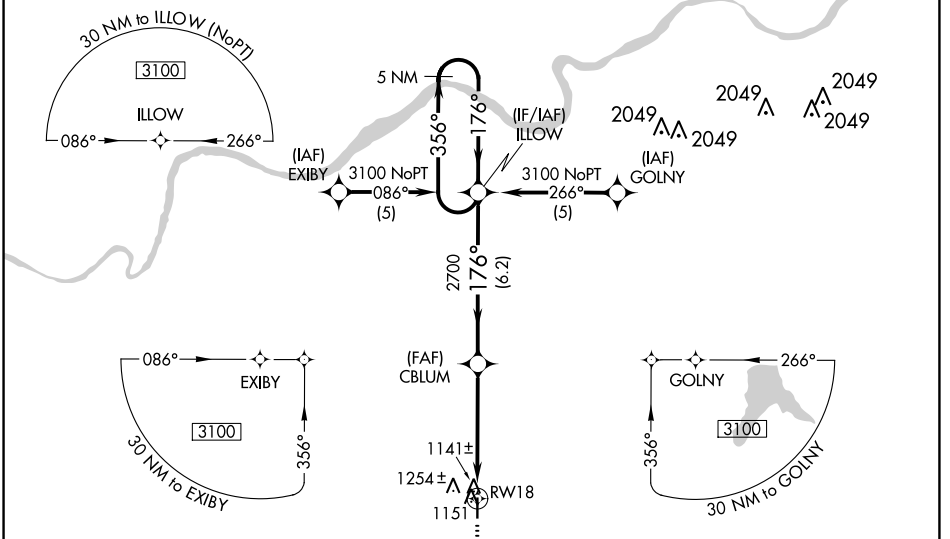


WAAS CH 53700 W18A	APP CRS 176°	Rwy Idg TDZE Apt Elev	4097 1096 1096
--	------------------------	-----------------------------	---

RNAV (GPS) RWY 18

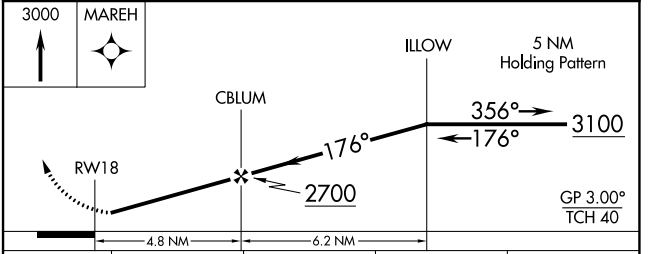
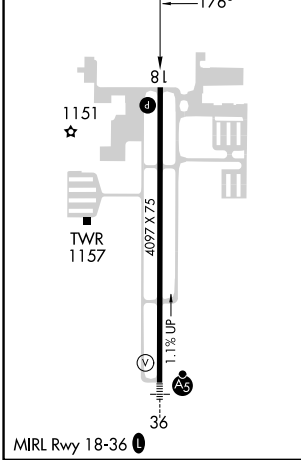
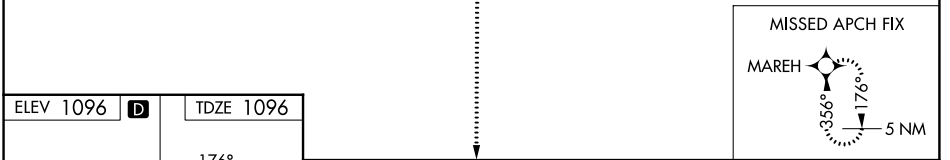
JOHNSON COUNTY EXEC (OJC)

RNP APCH. ▼ For uncompensated Baro-VNAV systems, LNAV/VNAV NA below -17°C or above 54°C.		MISSED APPROACH: Climb to 3000 direct MAREH and hold.		
ATIS 119.35	KANSAS CITY APP CON 118.9 251.075	EXECUTIVE TOWER* 126.0 (CTAF) 225.4	GND CON 121.6	UNICOM 122.95



NC-2, 28 NOV 2024 to 26 DEC 2024

NC-2, 28 NOV 2024 to 26 DEC 2024



CATEGORY	A	B	C	D
LPV DA	1346-1 250 (300-1)			NA
LNAV/VNAV DA	1527-1½ 431 (500-1½)			NA
LNAV MDA	1560-1 464 (500-1)	1560-1¼ 464 (500-1¼)		NA
CIRCLING	1620-1 524 (600-1)	1620-1½ 524 (600-1½)		NA