

WAAS CH 40431 W18A	APP CRS 181°	Rwy Idg TDZE Apt Elev	4306 1737 1737
--	------------------------	-----------------------------	---

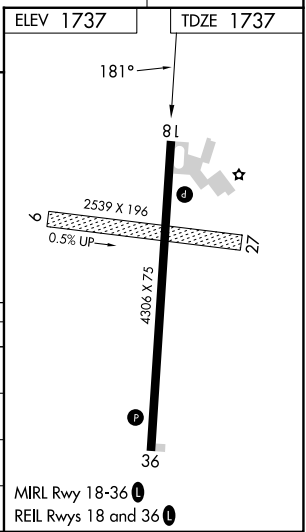
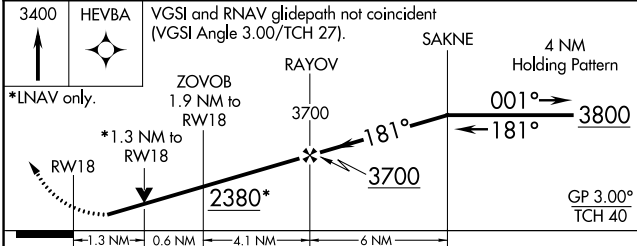
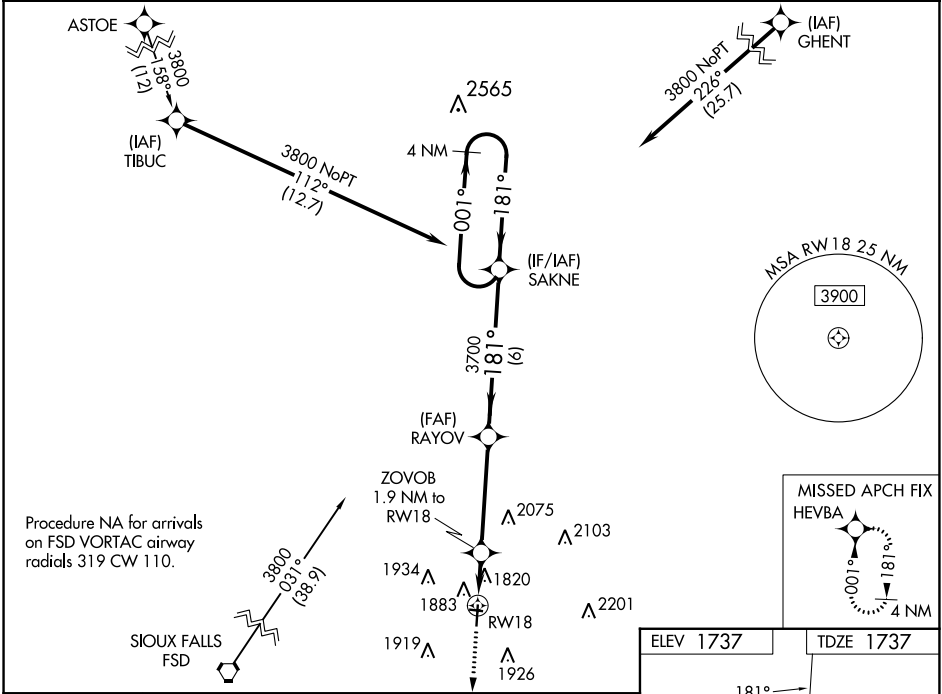
RNAV (GPS) RWY 18

PIPESTONE MUNI (PQN)

⚠ For uncompensated Baro-VNAV systems, LNAV/VNAV NA below -18°C (0°F) or above 54°C (130°F). DME/DME RNP -0.3 NA. When local altimeter setting not received, use Slayton altimeter setting and increase all DA 68 feet and all MDA 80 feet; increase LPV all Cats, LNAV/VNAV all Cats, and Circling Cat C visibility ¼ mile; increase LNAV Cat C visibility ⅓ mile. Helicopter visibility reduction below ¾ SM NA. Baro-VNAV and VDP NA with Slayton altimeter setting. Circling NA to Rwy's 9 and 27.

MISSED APPROACH:
Climb to 3400 direct HEVBA and hold.

AWOS-3PT 118.375	MINNEAPOLIS CENTER 132.05 317.4	GCO 121.725	UNICOM 122.8 (CTAF) 0
----------------------------	---	-----------------------	---------------------------------



CATEGORY	A	B	C	D
LPV DA	1987-1	250 (300-1)		NA
LNAV/VNAV DA	2034-1	297 (300-1)		NA
LNAV MDA	2180-1	443 (500-1)	2180-1 ⅜ 443 (500-1 ⅜)	NA
CIRCLING	2200-1 463 (500-1)	2280-1 543 (600-1)	2280-1 ½ 543 (600-1 ½)	NA

NC-1, 28 NOV 2024 to 26 DEC 2024

NC-1, 28 NOV 2024 to 26 DEC 2024