

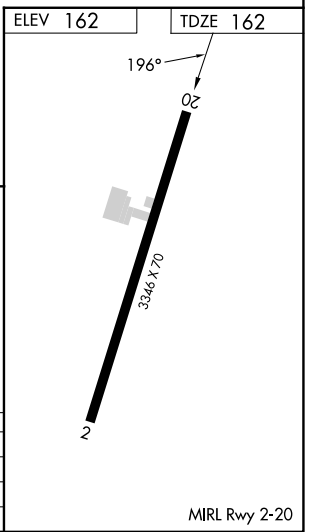
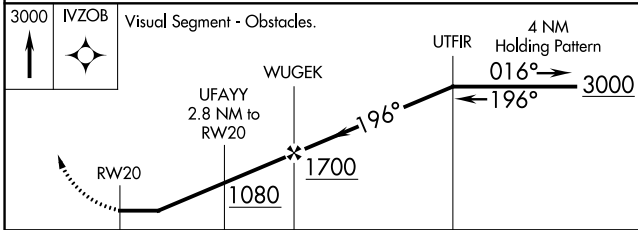
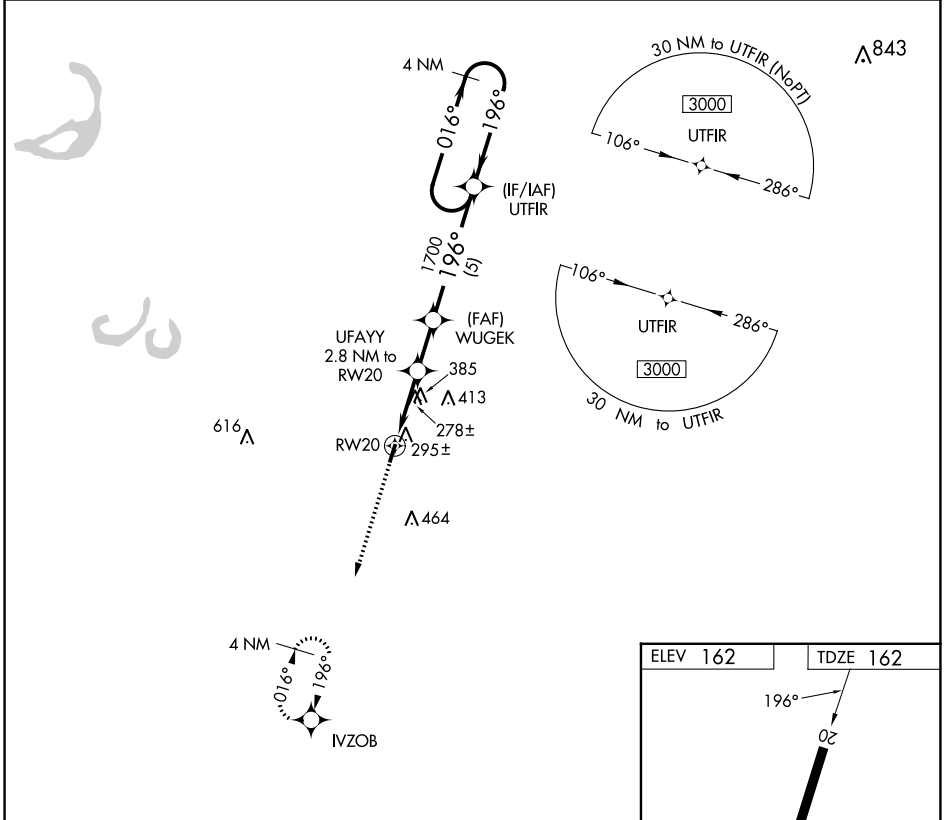
WAAS CH <b>69634</b> <b>W20A</b>	APP CRS <b>196°</b>	Rwy Idg <b>3346</b> TDZE <b>162</b> Apt Elev <b>162</b>
--	------------------------	---

# RNAV (GPS) RWY 20

SELS (MMS)

<p><b>▽</b> DME/DME RNP-0.3 NA. Helicopter visibility reduction below 1 SM NA. Use Clarksdale altimeter setting, when not received, use Tunica altimeter setting and increase all MDA 40 feet. Rwy 20 Straight-in and Circling minimums NA at night.</p> <p><b>△</b> NA</p>	<p><b>MISSED APPROACH:</b> Climb to 3000 direct IVZOB and hold, continue climb-in-hold to 3000.</p>
---	---

CKM AWOS-3 <b>120.675</b>	MEMPHIS CENTER <b>135.3 335.8</b>	CTAF <b>122.9</b>
------------------------------	--------------------------------------	----------------------



CATEGORY	A	B	C	D
LP MDA	600-1	438 (500-1)		NA
RNAV MDA	680-1	518 (600-1)		NA
<b>C</b> CIRCLING	680-1	518 (600-1)		NA

SC-4, 28 NOV 2024 to 26 DEC 2024

SC-4, 28 NOV 2024 to 26 DEC 2024