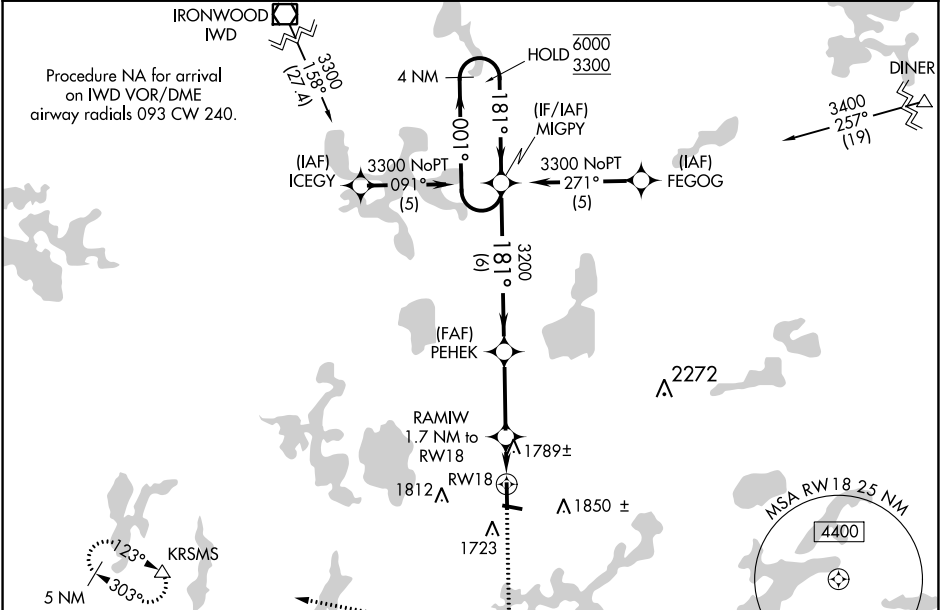


WAAS CH 72915 W18A	APP CRS 181°	Rwy Idg TDZE Apt Elev	5150 1630 1630
--	------------------------	-----------------------------	---

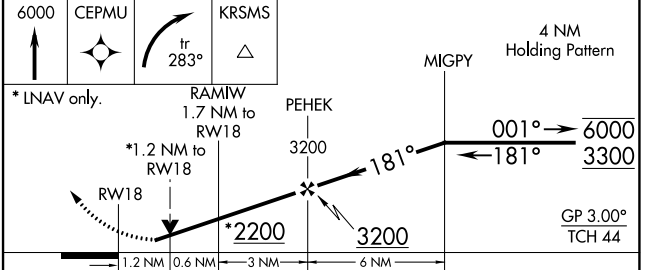
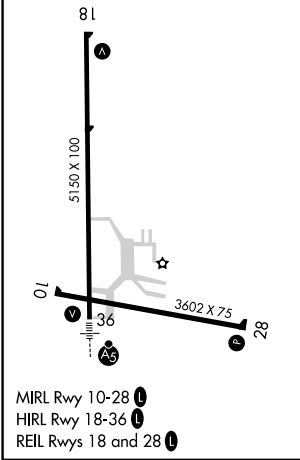
RNAV (GPS) RWY 18

LAKELAND/NOBLE F LEE MEML FLD (A.R.V)

RNP APCH.		<p>MISSED APPROACH: Climb to 6000 direct CEPMU and right turn on track 283° to KRMSM and hold, continue climb-in-hold to 6000.</p>
<p>⚠ Circling Rwy 10, 28 NA at night. Rwy 18 helicopter visibility reduction below ¼ SM NA. For uncompensated Baro-VNAV systems, LNAV/VNAV NA below -18°C or above 54°C.</p>		
AWOS-3 121.125	MINNEAPOLIS CENTER 133.65 281.5	UNICOM 122.7 (CTAF)



ELEV 1630	TDZE 1630
-----------	-----------



CATEGORY	A	B	C	D
LPV DA		1974-1¼	344 (400-1¼)	
LNAV/VNAV DA		2101-1¾	471 (500-1¾)	
LNAV MDA	2040-1	410 (500-1)	2040-1¼	410 (500-1¼)
C CIRCLING	2100-1 470 (500-1)	2200-1 570 (600-1)	2200-1½ 570 (600-1½)	2220-2 590 (600-2)

EC-3, 28 NOV 2024 to 26 DEC 2024

EC-3, 28 NOV 2024 to 26 DEC 2024