

| | | |
|--|------------------------|---|
| WAAS CH 61205 W36A | APP CRS 360° | Rwy Idg 5503 TDZE 1497 Apt Elev 1498 |
|--|------------------------|---|

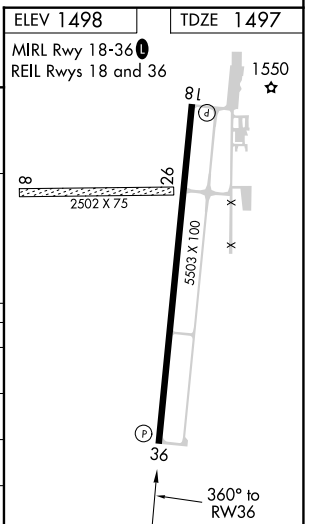
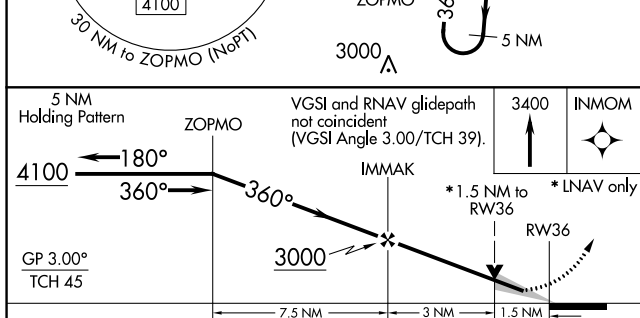
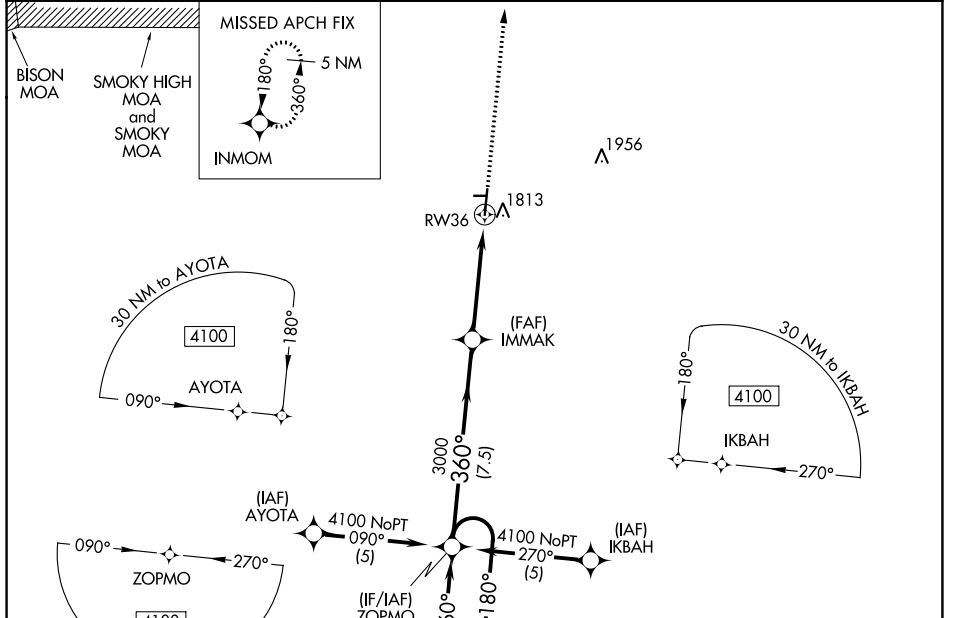
RNAV (GPS) RWY 36

MC PHERSON (MPR)

▽ When local altimeter setting not received, use Salina altimeter setting: increase LPV DA to 1838 feet, LNAV/VNAV DA to 2074 feet and all visibilities 3/8 mile; increase all MDA 100 feet and visibility Cat C 1/4 mile. For uncompensated Baro-VNAV systems, LNAV/VNAV NA below -17°C (2°F) or above 54°C (130°F). Baro-VNAV and VDP NA when using Salina altimeter setting. DME/DME RNP-0.3 NA. Circling NA to Rwy's 8 and 26.

△ NA MISSED APPROACH: Climb to 3400 direct INMOM and hold.

| | | |
|---------------------------|---------------------------------------|---------------------------------|
| AWOS-3P 119.025 | WICHITA APP CON 125.5 306.2 | UNICOM 122.8 (CTAF) 0 |
|---------------------------|---------------------------------------|---------------------------------|



| CATEGORY | A | B | C | D |
|---------------|------------|-------------|-------------------------------|----|
| LPV DA | 1747-3/4 | | 250 (300-3/4) | NA |
| LNAV/ VNAV DA | 1983-1 5/8 | | 486 (500-15/8) | NA |
| LNAV MDA | 2020-1 | 523 (600-1) | 2020-1 1/2 523 (600-1 1/2) | NA |
| CIRCLING | 2120-1 | 622 (700-1) | 2120-1 3/4 622 (700-1 3/4) | NA |

NC-2, 28 NOV 2024 to 26 DEC 2024

NC-2, 28 NOV 2024 to 26 DEC 2024