


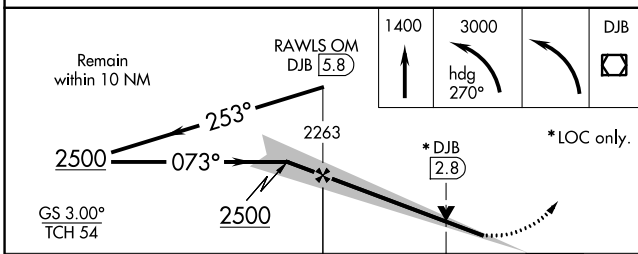
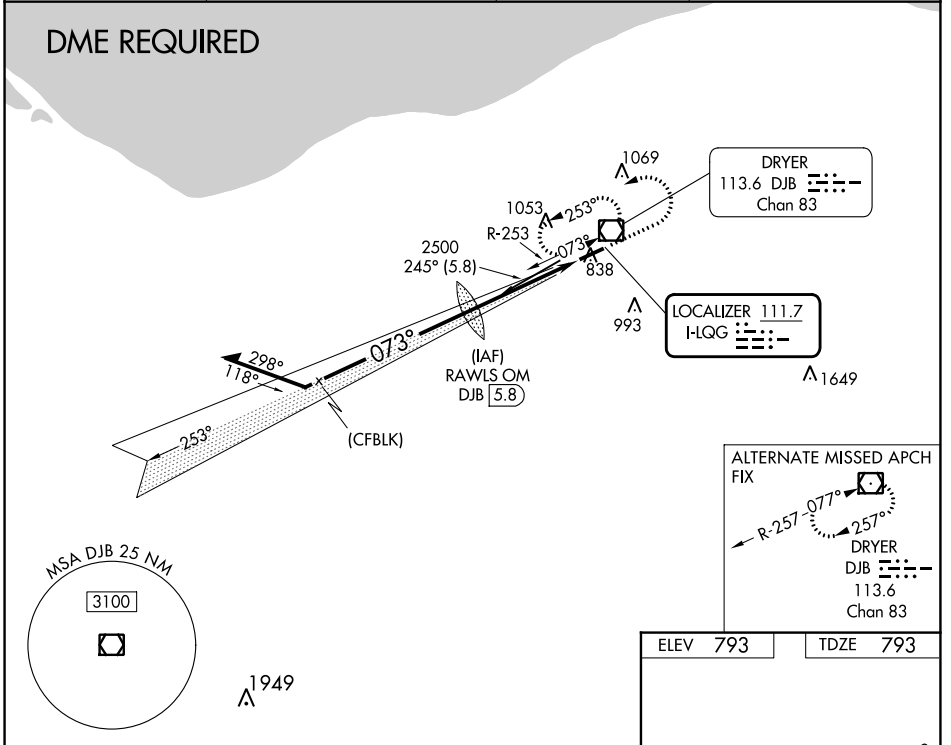
LOC I-LQG 111.7	APP CRS 073°	Rwy Idg 5002
		TDZE 793
		Apt Elev 793

ILS or LOC RWY 7
LORAIN COUNTY RGNL (LPR)

⚠ For inoperative MALSR, increase S-LOC 7 Cats C/D visibility to 1 3/8 mile.
⚠ VDP NA with Cleveland-Hopkins Intl altimeter setting. When local altimeter setting not received, use Cleveland-Hopkins Intl altimeter setting and increase all DA 36 feet and all MDA 40 feet.

MALSR  **MISSED APPROACH:** Climb to 1400 then climbing left turn to 3000 on heading 270° then left turn direct DJB VOR/DME and hold.

ASOS 118.925	CLEVELAND APP CON 125.35 346.325	CLNC DEL 125.7	UNICOM 122.7 (CTAF) 0
------------------------	--	--------------------------	---------------------------------



ELEV 793	TDZE 793
REIL Rwy 25 0	HIRL Rwy 7-25 0
FAF to MAP 4.4 NM	
Knots	60 90 120 150 180
Min:Sec	4:24 2:56 2:12 1:46 1:28

CATEGORY	A	B	C	D
S-ILS 07	993-1/2 200 (200-1/2)			
S-LOC 07	1280-1/2 487 (500-1/2)	1280-1 487 (500-1)		
C CIRCLING	1280-1 487 (500-1)	1360-1 567 (600-1)	1420-1 3/4 627 (700-1 3/4)	1420-2 627 (700-2)

EC-2, 28 NOV 2024 to 26 DEC 2024

EC-2, 28 NOV 2024 to 26 DEC 2024