

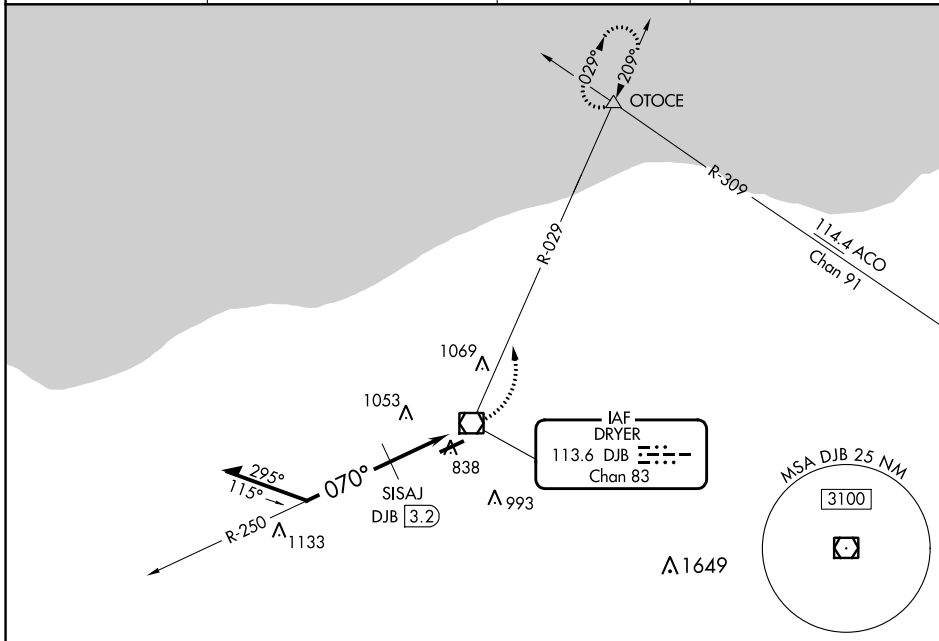
VOR/DME DJB <b>113.6</b> Chan <b>83</b>	APP CRS <b>070°</b>	Rwy Idg TDZE Apt Elev	<b>N/A</b> <b>N/A</b> <b>793</b>
---	------------------------	-----------------------------	--

**VOR-A**  
LORAIN COUNTY RGNL (L.P.R.)

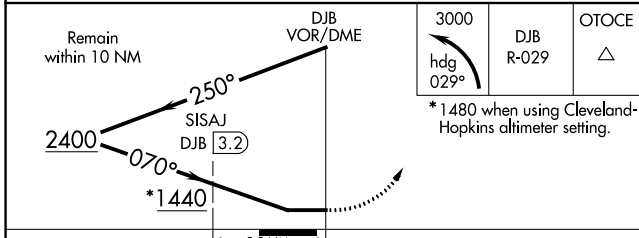
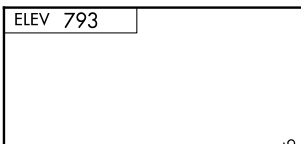
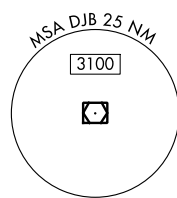
**▼** When local altimeter setting not received, use Cleveland-Hopkins Intl altimeter setting and increase all MDA 40 feet, increase circling Cat C/D visibility ¼ mile.

**MISSED APPROACH:** Climbing left turn to 3000 via heading 029° and DJB VOR/DME R-029 direct OTOCE INT and hold.

ASOS <b>118.925</b>	CLEVELAND APP CON <b>125.35 346.325</b>	CLNC DEL <b>125.7</b>	UNICOM <b>122.7</b> (CTAF) <b>0</b>
------------------------	--	--------------------------	--



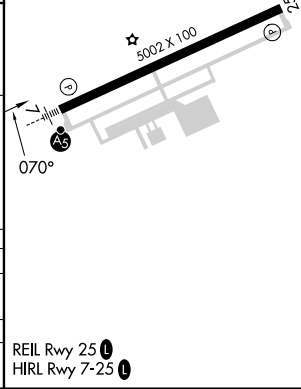
IAF  
DRYER  
113.6 DJB  
Chan 83



3000	DJB R-029	OTOCE
hdg 029°		△

\*1480 when using Cleveland-Hopkins altimeter setting.

CATEGORY	A	B	C	D
<b>C</b> CIRCLING	1440-1	647 (700-1)	1440-1¾ 647 (700-1¾)	1440-2 647 (700-2)
SISAJ DME MINIMUMS				
<b>C</b> CIRCLING	1300-1 507 (600-1)	1360-1 567 (600-1)	1420-1¾ 627 (700-1¾)	1420-2 627 (700-2)



EC-2, 28 NOV 2024 to 26 DEC 2024

EC-2, 28 NOV 2024 to 26 DEC 2024