

NDB SLP	APP CRS	Rwy Idg	5001
417	218°	TDZE	847
		Apt Elev	847

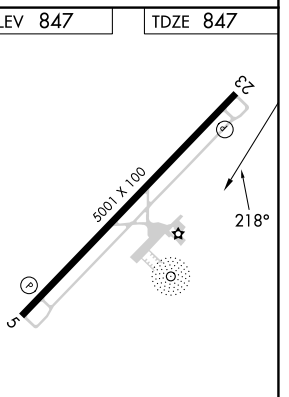
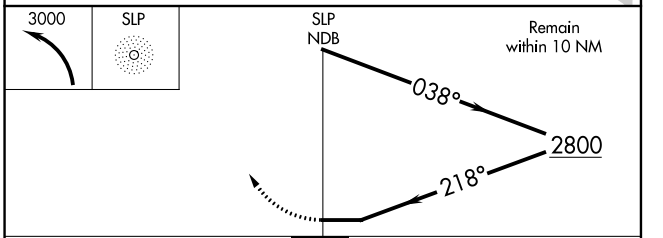
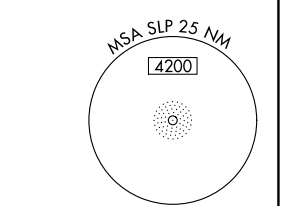
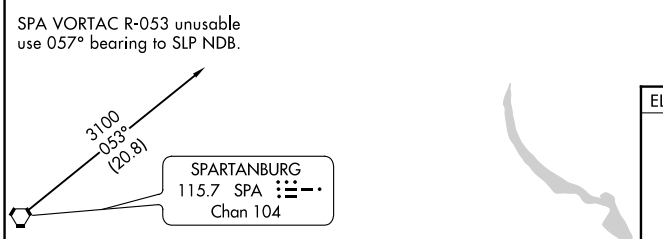
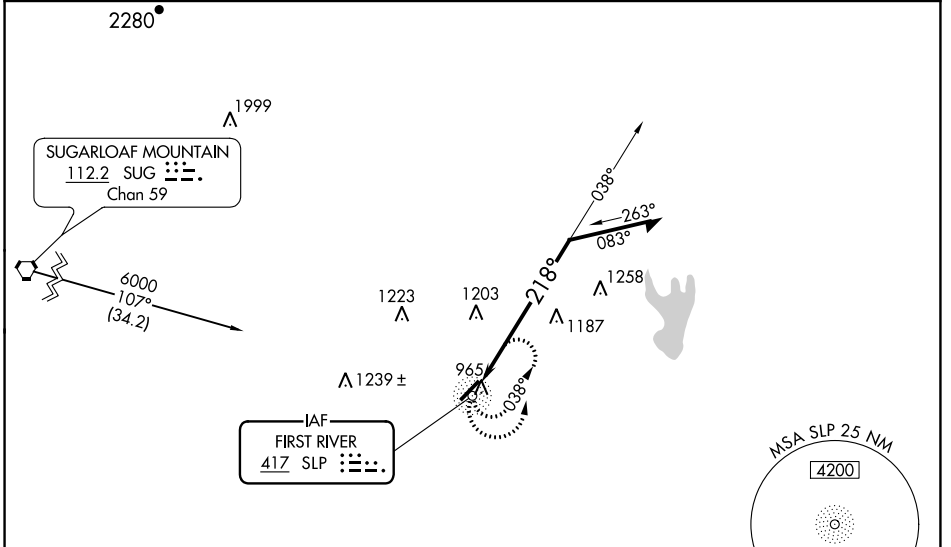
NDB RWY 23

SHELBY-CLEVELAND COUNTY RGNL (EHO)

⚠ Helicopter visibility reduction below 1 SM NA. When local altimeter setting not received, use Charlotte altimeter setting and increase all MDA 100 feet and S-23 Cat C and D visibility ¼ mile and Circling Cat C and D visibility ¼ mile. RWY 23 Straight-in and Circling and Circling to Rwy 5 NA at night.

MISSED APPROACH: Climbing left turn to 3000 in SLP NDB holding pattern.

AWOS-3 118.425	CHARLOTTE APP CON 120.05 257.2	UNICOM 122.8 (CTAF) 0
--------------------------	--	---------------------------------



CATEGORY	A	B	C	D
S-23	1620-1 773 (800-1)	1620-1¼ 773 (800-1¼)	1620-2¼ 773 (800-2¼)	1620-2½ 773 (800-2½)
CIRCLING	1620-1 773 (800-1)	1620-1¼ 773 (800-1¼)	1620-2¼ 773 (800-2¼)	1620-2½ 773 (800-2½)

MIRL Rwy 5-23 0

SE-2, 28 NOV 2024 to 26 DEC 2024

SE-2, 28 NOV 2024 to 26 DEC 2024