

WAAS CH <b>99424</b> <b>W23A</b>	APP CRS <b>230°</b>	Rwy Idg TDZE Apt Elev	<b>5001</b> <b>847</b> <b>847</b>
--	------------------------	-----------------------------	---

# RNAV (GPS) RWY 23

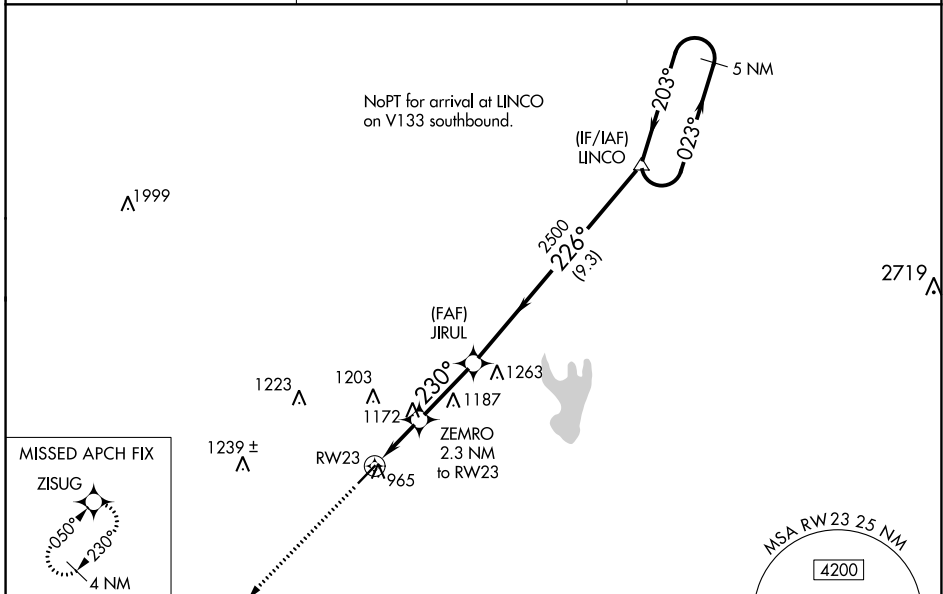
SHELBY-CLEVELAND COUNTY RGNL (EHO)

RNP APCH.

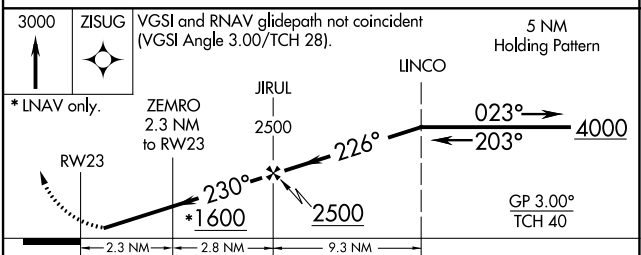
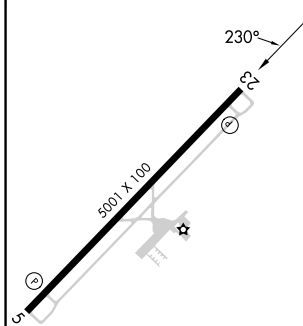
**⚠** Baro-VNAV NA when using Charlotte altimeter setting. For uncompensated Baro-VNAV systems, LNAV/VNAV NA below -16°C or above 38°C. When local altimeter setting not received, use Charlotte altimeter setting and increase all DA 88 feet and all MDA 100 feet; increase LPV all Cats visibility 1/8 SM and LNAV/VNAV all Cats, LNAV Cat C/D visibility 1/4 SM.

MISSED APPROACH:  
Climb to 3000 direct ZISUG and hold.

AWOS-3 <b>118.425</b>	CHARLOTTE APP CON <b>120.05 257.2</b>	UNICOM <b>122.8</b> (CTAF) <b>📻</b>
--------------------------	--	--



ELEV <b>847</b>	TDZE <b>847</b>
-----------------	-----------------



CATEGORY	A	B	C	D
LPV DA		1097-1	250 (300-1)	
LNAV/VNAV DA		1123-1	276 (300-1)	
LNAV MDA	1440-1	593 (600-1)	1440-1¾	593 (600-1¾)

SE-2, 28 NOV 2024 to 26 DEC 2024

SE-2, 28 NOV 2024 to 26 DEC 2024