

VOR/DME CZI <b>117.3</b> Chan <b>120</b>	APP CRS <b>319°</b>	Rwy ldg <b>6143</b> TDZE <b>4940</b> Apt Elev <b>4970</b>
--	------------------------	---

# VOR/DME RWY 31

JOHNSON COUNTY (BYG)

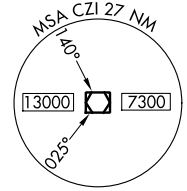
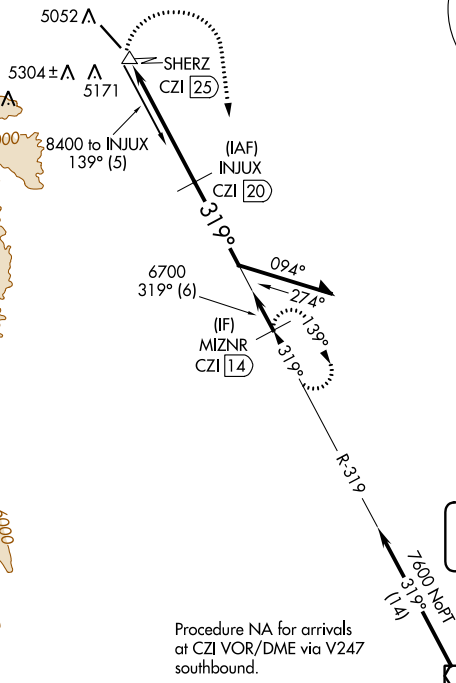
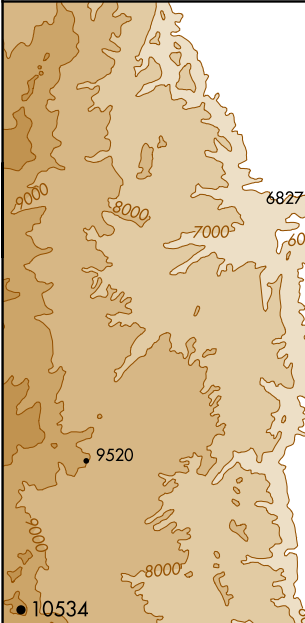
**⚠** Visibility reduction by helicopters NA. If local altimeter setting not received, use Sheridan altimeter setting and increase all MDAs 600 feet. When VGSI inoperative, procedure NA at night. Circling NA southwest of Rwy 13-31.

MISSED APPROACH: Climbing right turn to 7600 via heading 160° and CZI VOR/DME R-319 to MIZNR/14 DME and hold.

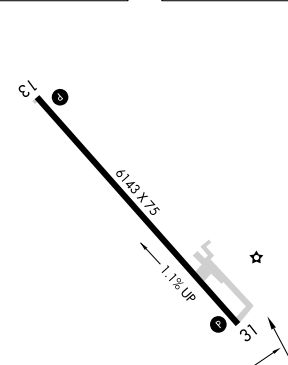
ASOS  
**135.425**

SALT LAKE CENTER  
**127.75 351.9**

UNICOM  
**122.8 (CTAF)**

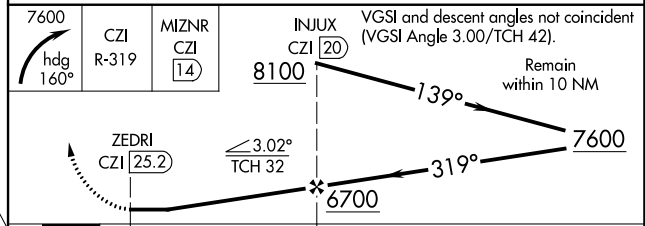


ELEV 4970 TDZE 4940



REIL Rwy 31  
MIRL Rwy 13-31

Procedure NA for arrivals at CZI VOR/DME via V247 southbound.



CATEGORY	A	B	C	D
S-31	5680-1 740 (800-1)	5680-1¼ 740 (800-1¼)	5680-2¼ 740 (800-2¼)	5680-2½ 740 (800-2½)
<b>C</b> CIRCLING	5680-1 710 (800-1)	5680-1¼ 710 (800-1¼)	5680-2¼ 710 (800-2¼)	5680-2½ 710 (800-2½)

NW-1, 28 NOV 2024 to 26 DEC 2024

NW-1, 28 NOV 2024 to 26 DEC 2024