

WAAS CH 40322 W21A	APP CRS 211°	Rwy Idg TDZE Apt Elev	5500 1270 1270
--	------------------------	-----------------------------	---

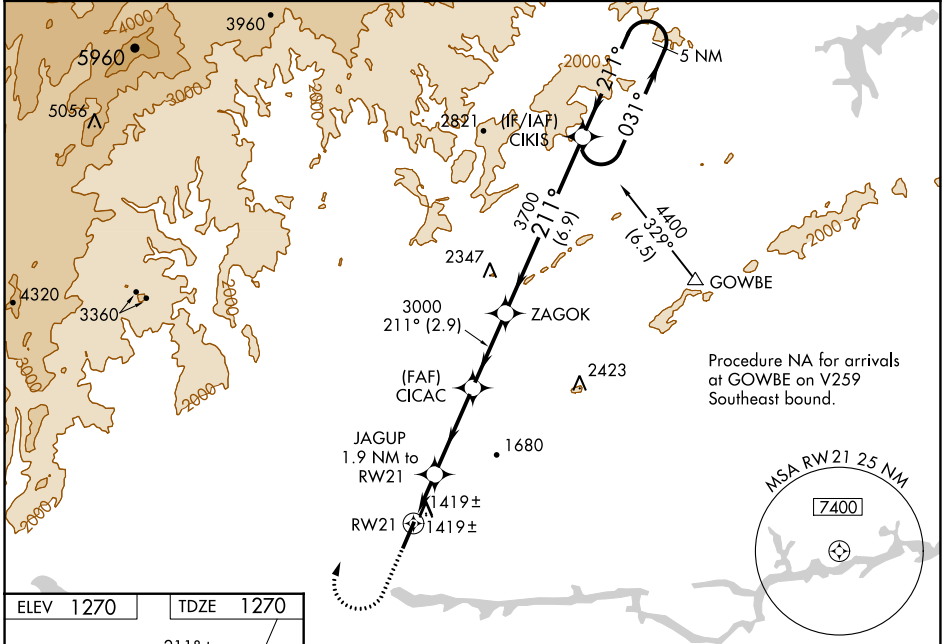
RNAV (GPS) RWY 21

FOOTHILLS RGNL (MR.N)

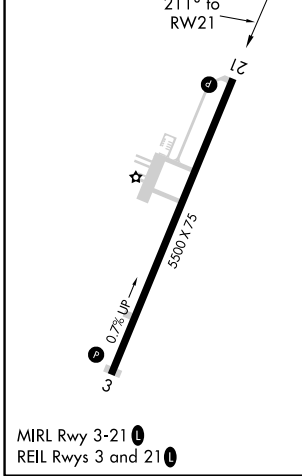
⚠ Baro-VNAV NA when using Hickory altimeter setting. For uncompensated Baro-VNAV systems, LNAV/VNAV NA below -17°C (2°F) or above 35°C (95°F). DME/DME RNP-0.3 NA. VDP NA with Hickory altimeter setting. When local altimeter not received use Hickory altimeter: increase LPV DA to 1562 feet, LNAV/VNAV DA to 1642 feet, and visibility LPV all Cats ¼ SM and LNAV/VNAV all Cats ½ SM; increase all MDA 60 feet and visibility LNAV Cats C and D and Circling Cat D ¼ SM.

MISSED APPROACH: Climb to 2000 then climbing right turn to 4400 direct CIKIS and hold.

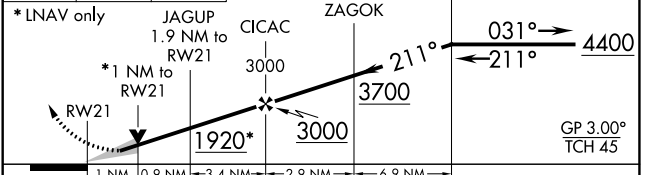
AWOS-3P 124.175	ATLANTA CENTER 125.15 263.0	UNICOM 122.7 (CTAF) 0
---------------------------	---------------------------------------	---------------------------------



ELEV 1270	TDZE 1270
-----------	-----------



2000	4400	CIKIS	VGSI and RNAV glidepath not coincident (VGSI Angle 3.50/TCH 48).
			5 NM Holding Pattern



CATEGORY	A	B	C	D
LPV DA		1520-¾	250 (300-¾)	
LNAV/VNAV DA		1600-1½	330 (400-1½)	
LNAV MDA	1680-1	410 (500-1)	1680-1½	410 (500-1½)
CIRCLING	1720-1 450 (500-1)	1760-1 490 (500-1)	1800-1½ 530 (600-1½)	2140-2¾ 870 (900-2¾)

SE-2, 28 NOV 2024 to 26 DEC 2024

SE-2, 28 NOV 2024 to 26 DEC 2024