

WAAS CH <b>69322</b> <b>W03A</b>	APP CRS <b>031°</b>	Rwy Idg TDZE <b>1248</b> Apt Elev <b>1270</b>	<b>5500</b>
--	------------------------	---	-------------

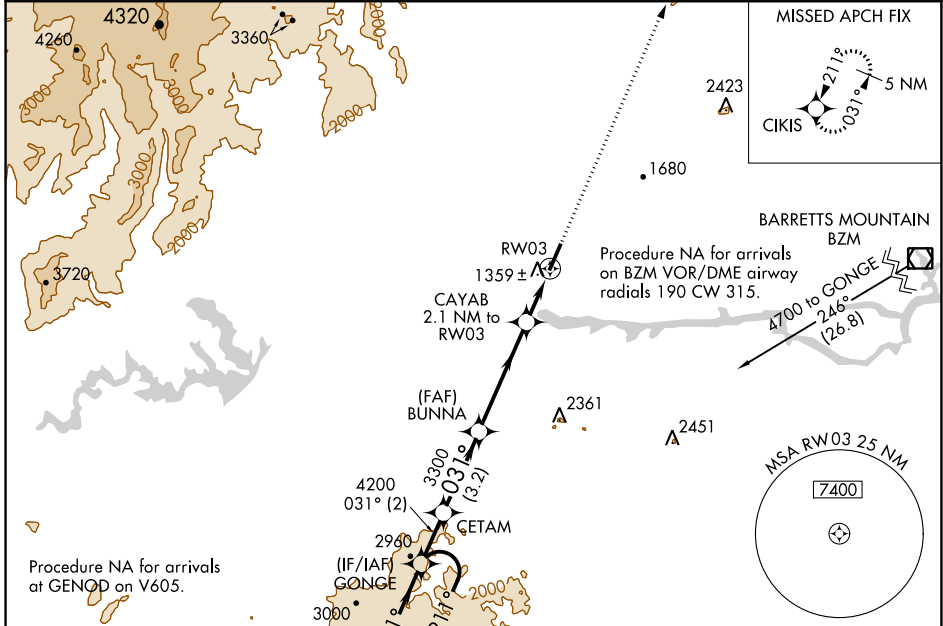
# RNAV (GPS) RWY 3

FOOTHILLS RGNL (MRN)

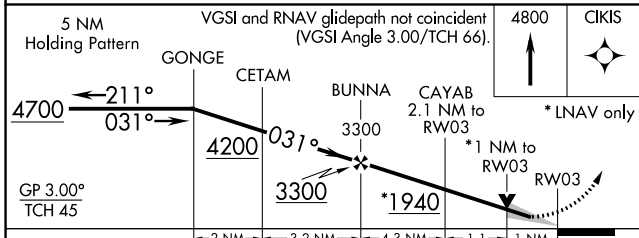
**⚠** Baro-VNAV NA when using Hickory altimeter setting. For uncompensated Baro-VNAV systems, LNAV/VNAV NA below -17°C (2°F) or above 36°C (96°F). DME/DME RNP-0.3 NA. VDP NA with Hickory altimeter setting. When local altimeter not received use Hickory altimeter: increase LPV DA to 1540 feet, LNAV/VNAV DA to 1600 feet, and visibility LNAV/VNAV all Cats ½ SM; increase all MDA 60 feet and visibility LNAV Cats C and D ½ SM and Circling Cat D ¼ SM.

**⚠** MISSED APPROACH: Climb to 4800 direct CIKIS and hold.

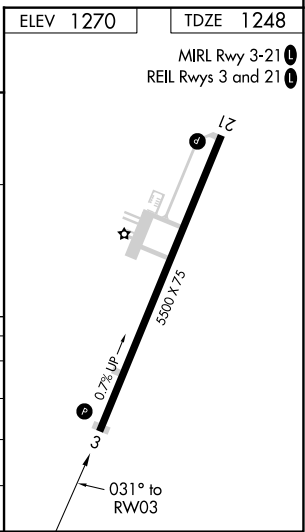
AWOS-3P <b>124.175</b>	ATLANTA CENTER <b>125.15 263.0</b>	UNICOM <b>122.7 (CTAF)</b> <b>0</b>
---------------------------	---------------------------------------	--



ELEV 1270	TDZE 1248
MIRL Rwy 3-21 <b>1</b>	
REIL Rwy 3 and 21 <b>1</b>	



CATEGORY	A	B	C	D
LPV DA		1498-1	250 (300-1)	
LNAV/VNAV DA		1558-1½	310 (300-1½)	
LNAV MDA		1620-1	372 (400-1)	
CIRCLING	1720-1 450 (500-1)	1760-1 490 (500-1)	1800-1½ 530 (600-1½)	2140-2¾ 870 (900-2¾)



SE-2, 28 NOV 2024 to 26 DEC 2024

SE-2, 28 NOV 2024 to 26 DEC 2024