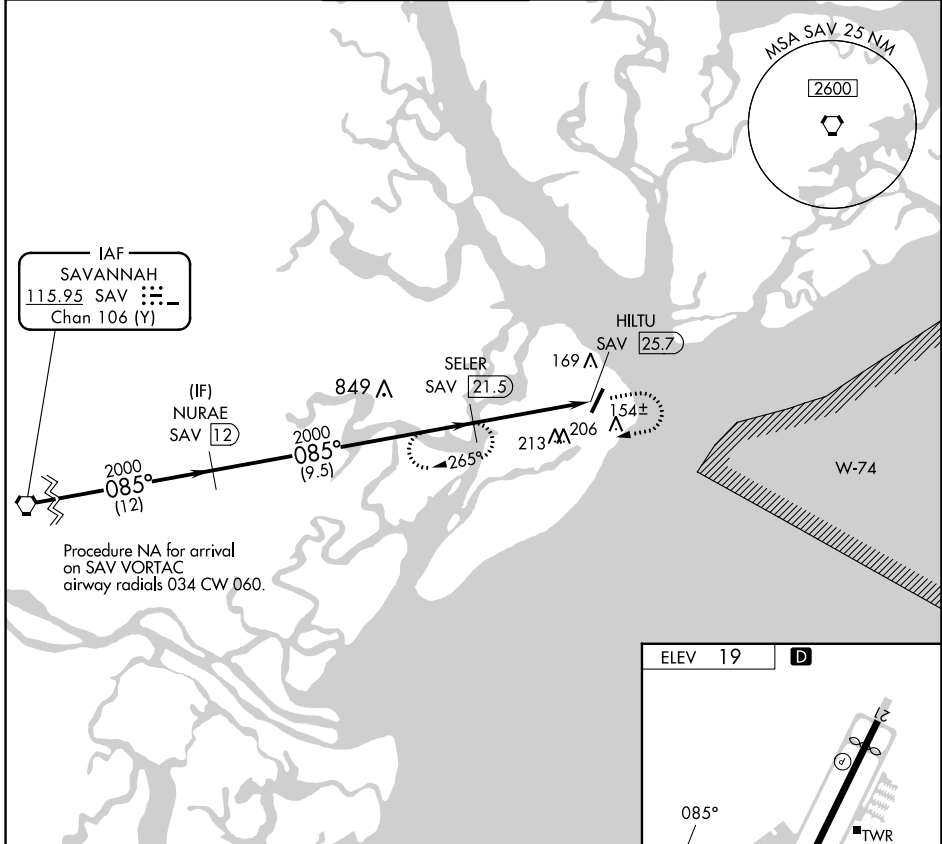


VORTAC SAV <b>115.95</b> Chan <b>106</b> (Y)	APP CRS <b>085°</b>	Rwy Idg TDZE Apt Elev	<b>N/A</b> <b>N/A</b> <b>19</b>
--	------------------------	-----------------------------	---------------------------------------

**VOR-A**  
HILTON HEAD (HXD)

DME required			MISSED APPROACH: Climb to 800 then climbing right turn to 2000 on SAV R-085 to SELER/21.5 DME and hold, continue climb-in-hold to 2000.		
--------------	--	--	---	--	--

ATIS <b>121.4</b>	SAVANNAH APP CON ★ <b>125.3 371.875</b>	HILTON HEAD TOWER ★ <b>118.975</b> (CTAF) <b>0</b>	GND CON <b>121.1</b>	CLNC DEL <b>121.1</b>	CLNC DEL <b>123.85</b> (When twr closed)
----------------------	--	---	-------------------------	--------------------------	--

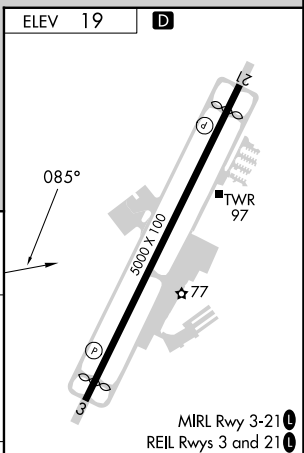
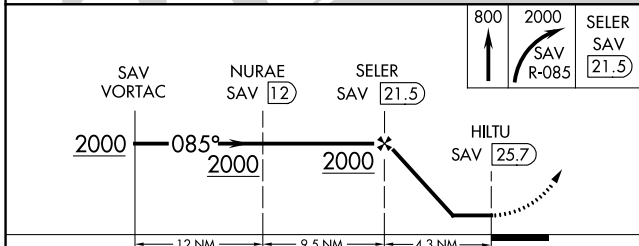


IAF  
SAVANNAH  
115.95 SAV  
Chan 106 (Y)

Procedure NA for arrival on SAV VORTAC airway radials 034 CW 060.

SE-2, 28 NOV 2024 to 26 DEC 2024

SE-2, 28 NOV 2024 to 26 DEC 2024



CATEGORY	A	B	C	D	FAF to MAP 4.3 NM					
ⓐ CIRCLING	800-1	781 (800-1)	800-2¼ 781 (800-2¼)	800-2½ 781 (800-2½)	Knots	60	90	120	150	180
					Min:Sec	4:18	2:52	2:09	1:43	1:26