

WAAS CH <b>45708</b> <b>W03A</b>	APP CRS <b>035°</b>	Rwy Idg <b>5000</b> TDZE <b>812</b> Apt Elev <b>819</b>
--	------------------------	---

# RNAV (GPS) Z RWY 3

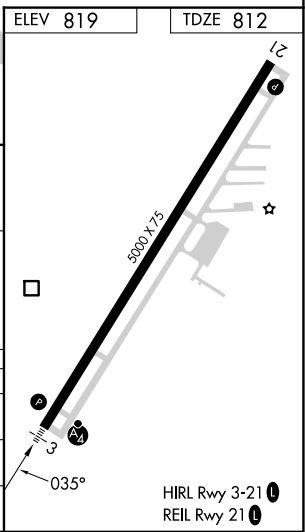
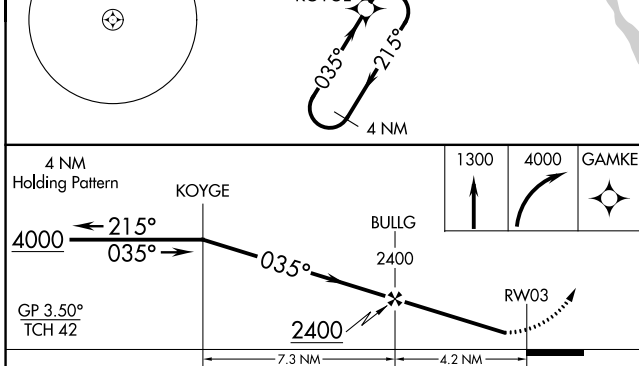
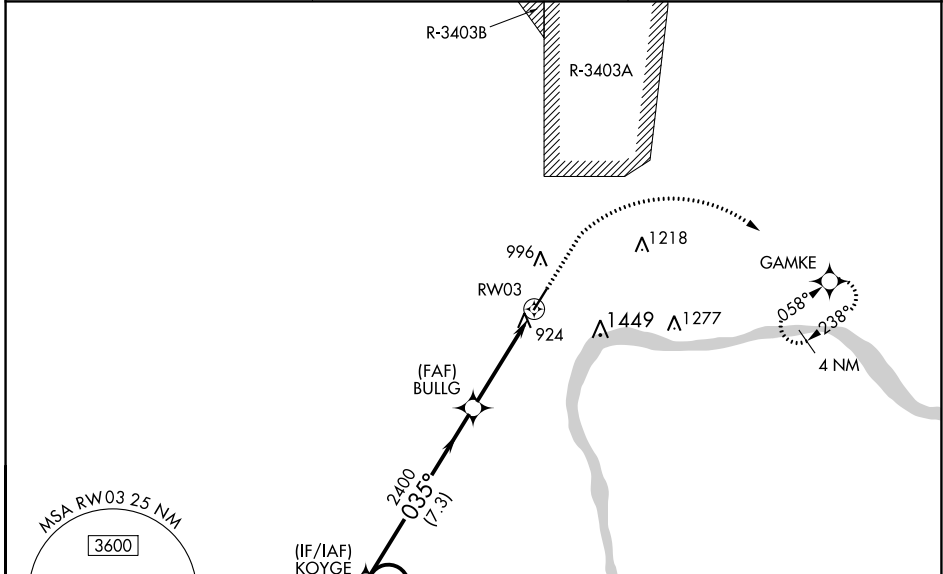
MADISON MUNI (IMS)

**NA** For uncompensated Baro-VNAV systems, LNAV/VNAV NA below -16°C (4°F) or above 54°C (130°F). DME/DME RNP-0.3 NA. Rwy 3 helicopter visibility reduction below ¾ SM NA. For inoperative ALS, increase \*\*LNAV/VNAV all Cats visibility to ¾ SM. For inoperative ALS when using Bowman Field altimeter setting, increase LPV all Cats visibility to 1¾ SM; increase \*\*LNAV/VNAV all Cats visibility to ¾ SM and LNAV/VNAV all Cats visibility to 2½ SM.

**MALSF**

**MISSED APPROACH:** Climb to 1300 then climbing right turn to 4000 direct GAMKE and hold, continue climb-in-hold to 4000. \*\*Missed approach requires minimum climb of 410 feet per NM to 1900.

AWOS-3 <b>119.175</b>	LOUISVILLE APP CON <b>132.075 327.0</b>	UNICOM <b>123.0 (CTAF) 0</b>
--------------------------	--	---------------------------------



CATEGORY	A	B	C	D
LPV DA	1142-¾	330 (400-¾)		NA
LNAV/VNAV DA**	1095-¾	283 (300-¾)		NA
LNAV/VNAV DA	1420-1½	608 (700-1½)		NA

EC-2, 28 NOV 2024 to 26 DEC 2024

EC-2, 28 NOV 2024 to 26 DEC 2024