

WAAS CH <b>97418</b>	APP CRS <b>354°</b>	Rwy Idg TDZE Apt Elev	<b>5399</b> <b>186</b> <b>195</b>
-------------------------	------------------------	-----------------------------	---

# RNAV (GPS) RWY 35

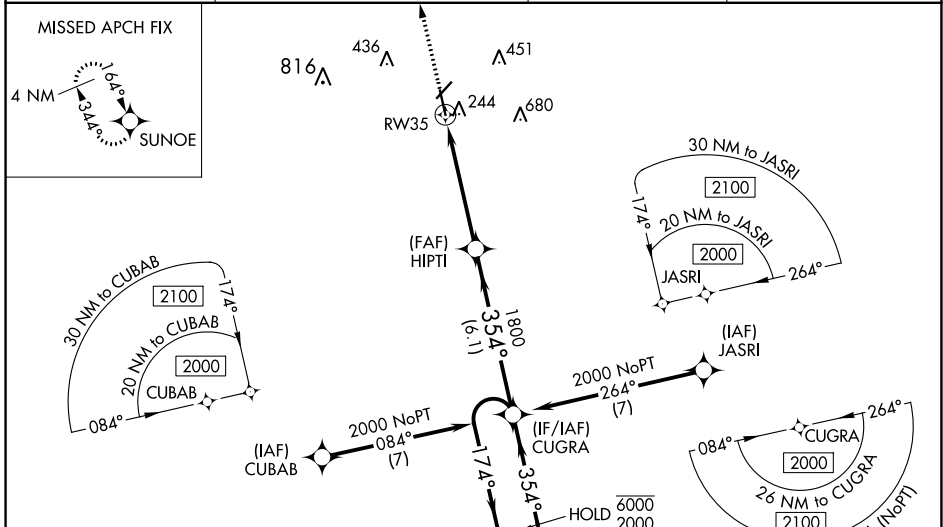
ORANGEBURG MUNI (OGB)

RNP APCH - GPS.

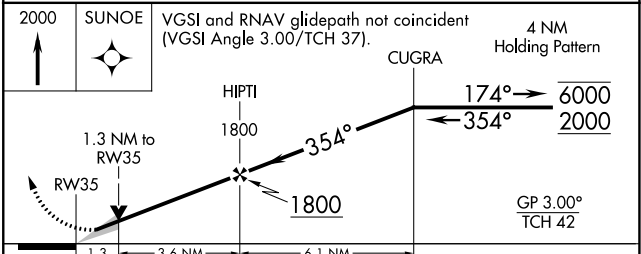
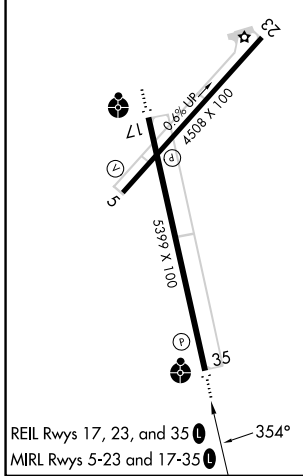
**⚠** Circling Rwy 17 NA at night. Baro-VNAV and VDP NA when using Columbia Metro altimeter setting. For uncompensated Baro-VNAV systems, LNAV/VNAV NA below -4°C or above 54°C. Inop table does not apply to LPV. For inop ALS, increase LNAV/VNAV Cat A/B visibility to ½ SM and LNAV Cat C/D visibility to 1½ SM. When local altimeter setting not received, use Columbia Metro altimeter setting: increase LPV DA to 515 feet and all visibilities ½ SM; increase LNAV/VNAV DA to 559 feet and all visibilities ¼ SM; increase all MDAs 80 feet and visibility Cts C and D ¼ SM. For inop ALS when using Columbia Metro altimeter setting, increase LPV and LNAV/VNAV Cat A/B visibility to 1 SM.

ODALS MISSED APPROACH: Climb to 2000 direct SUNOE and hold.

ASOS <b>118.525</b>	COLUMBIA APP CON <b>124.15 338.2</b>	GCO <b>125.675</b>	UNICOM <b>122.7 (CTAF) 0</b>
------------------------	---	-----------------------	---------------------------------



ELEV 195	TDZE 186
----------	----------



CATEGORY	A	B	C	D
LPV DA		436-¾	250 (300-¾)	
LNAV/VNAV DA		480-¾	294 (300-¾)	
LNAV MDA	640-¾	454 (500-¾)	640-1⅛	454 (500-1⅛)
CIRCLING	680-1 485 (500-1)	740-1 545 (600-1)	980-2¼ 785 (800-2¼)	980-2½ 785 (800-2½)

SE-2, 28 NOV 2024 to 26 DEC 2024

SE-2, 28 NOV 2024 to 26 DEC 2024