

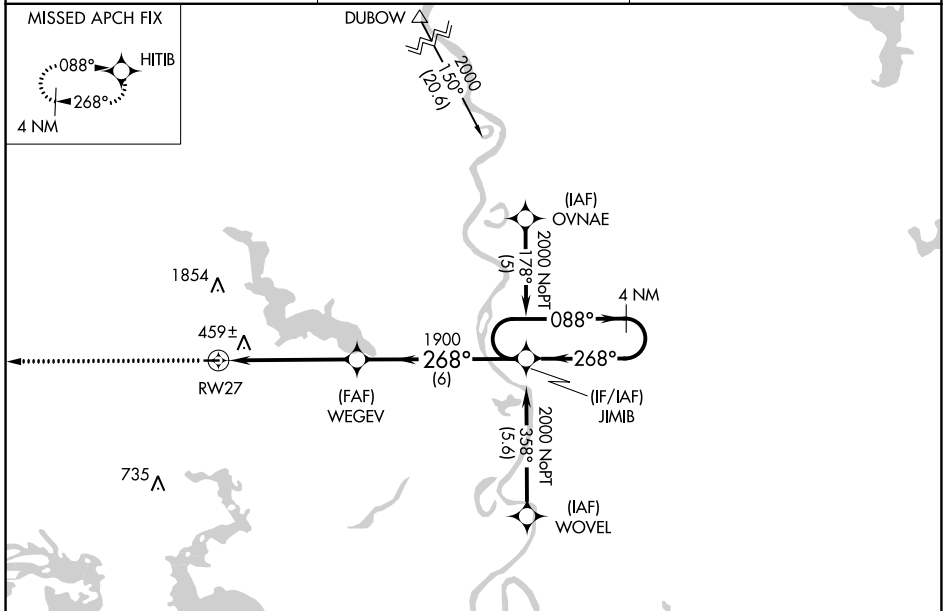
APP CRS	Rwy Idg	2998
268°	TDZE	260
	Apr Elev	260

RNAV (GPS) RWY 27

VIVIAN (3F4)

RNP APCH.	MISSED APPROACH: Climb to 2000 direct HITIB and hold.
Use Shreveport Rgnl altimeter setting; when not received, use Shreveport Downtown altimeter setting. Procedure NA at night. Rwy 27 helicopter visibility reduction below 1 SM NA.	

SHREVEPORT APP CON 119.9 335.55	GCO 135.075	UNICOM 122.8 (CTAF) 0
---	-----------------------	---------------------------------

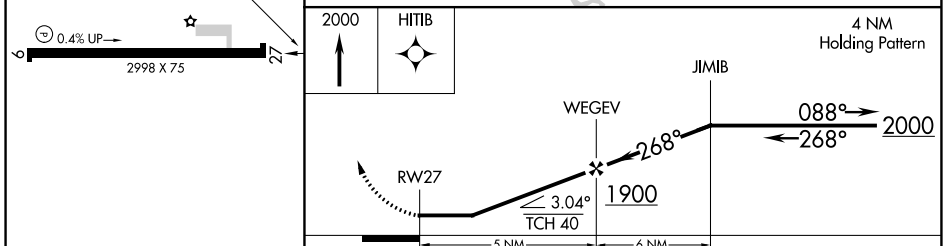
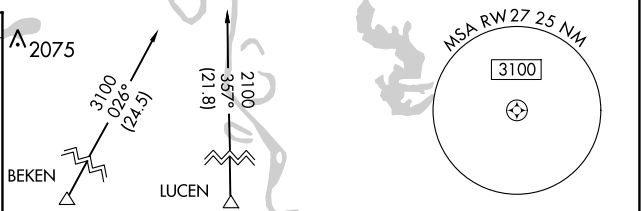


ELEV 260	TDZE 260
----------	----------

268° to RWY 27

0.4% UP

2998 X 75



MIRL Rwy 9-27 0				
REIL Rwy 9 0				
REIL Rwy 27				
CATEGORY	A	B	C	D
LNAV MDA	860-1	600 (600-1)	860-1¾ 600 (600-1¾)	NA

SC-4, 28 NOV 2024 to 26 DEC 2024

SC-4, 28 NOV 2024 to 26 DEC 2024