

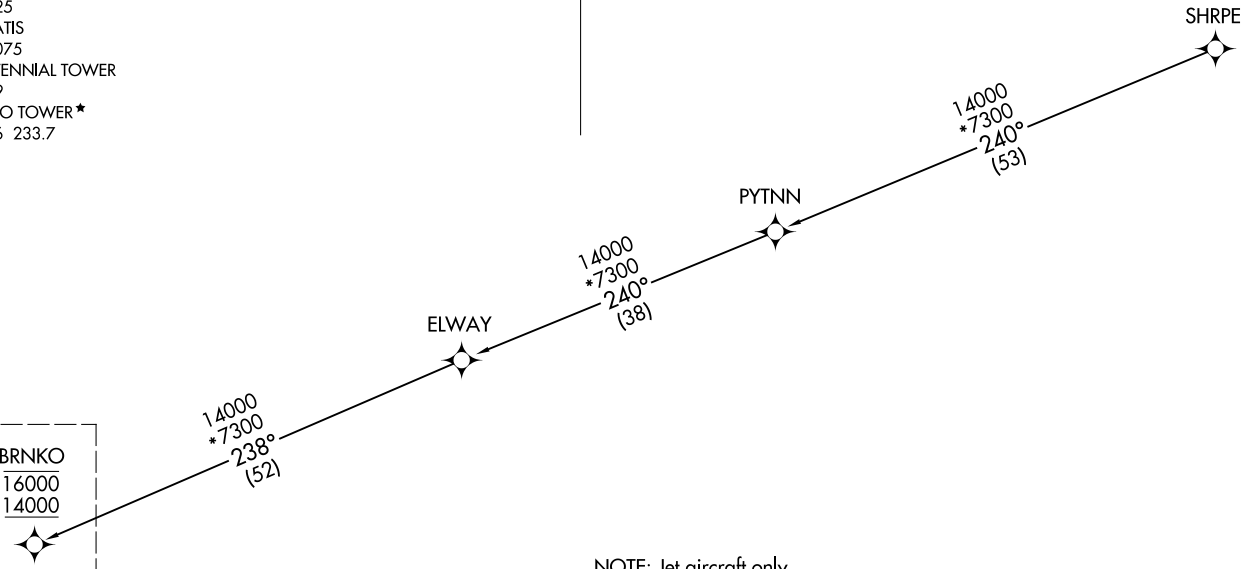
RNAV 1 - GPS.  
RADAR required.



DENVER APP CON  
127.05 363.25  
APA ATIS  
120.3  
BJC ATIS  
126.25  
FNL ATIS  
135.075  
CENTENNIAL TOWER  
118.9  
METRO TOWER \*  
118.6 233.7

BRNKO THREE ARRIVAL (RNAV) Transition Routes  
(BRNKO.BRNKO3) 16MAY24  
DENVER, COLORADO

(BRNKO.BRNKO3) 24137  
AL-5715 (FAA)  
BRNKO THREE ARRIVAL (RNAV) Transition Routes  
DENVER, COLORADO



BRNKO  
16000  
14000  
See following page  
for arrival routes

NOTE: Jet aircraft only.  
NOTE: Aircraft landing Centennial Airport do not file - to be assigned by ATC.  
NOTE: GPS required.

NOTE: Chart not to scale.

SHRPE TRANSITION (SHRPE.BRNKO3)

(CONTINUED ON FOLLOWING PAGE)

(BRNKO.BRNKO3) 24137

AL-5715 (FAA)

# BRNKO THREE ARRIVAL (RNAV) Arrival Routes

DENVER, COLORADO

DENVER APP CON  
 127.05 363.25  
 APA ATIS  
 120.3  
 BJC ATIS  
 126.25  
 FNL ATIS  
 135.075  
 CENTENNIAL TOWER  
 118.9  
 METRO TOWER\*  
 118.6 233.7

RNAV 1 - GPS.
RADAR required.

BRNKO  
 16000  
 14000

ORRNG  
 9000  
 Ldg KFNL and KGXY

BLTZZ  
 12000 250K

PICKK  
 14000

BWLIN  
 10000

NORTHERN  
 COLORADO  
 RGNL

GREELEY-WELD COUNTY

REDZN  
 10000

VANCE  
 BRAND

HBALL  
 9000

Ldg KLMO

PYDRT  
 9000

Ldg KBJC

KAYOO

WOLTS

ROCKY  
 MOUNTAIN  
 METRO

NOTE: Jet aircraft only.

NOTE: Aircraft landing Centennial Airport do not file - to be assigned by ATC.

NOTE: GPS required.

AAYES  
 9000

Ldg KAPA

LOWRE

NOTE: Chart not to scale.



(CONTINUED ON FOLLOWING PAGE)

# BRNKO THREE ARRIVAL (RNAV) Arrival Routes

DENVER, COLORADO

(BRNKO.BRNKO3) 16MAY24

SW-1, 28 NOV 2024 to 26 DEC 2024

SW-1, 28 NOV 2024 to 26 DEC 2024

ARRIVAL ROUTE DESCRIPTION

LANDING KAPA: From BRNKO on track 247° to cross PICKK at or below 14000, then on track 247° to cross BLTZZ at 12000 and at or below 250K, then on track 247° to cross BWLIN at 10000, then on track 189° to cross REDZN at 10000, then on track 176° to cross PYDRT at 9000, then on track 176° to cross AAYES at 9000, then on track 150°. Expect RADAR vectors to final approach course.

LANDING KBJC: From BRNKO on track 247° to cross PICKK at or below 14000, then on track 247° to cross BLTZZ at 12000 and at or below 250K, then on track 247° to cross BWLIN at 10000, then on track 189° to cross REDZN at 10000, then on track 176° to cross PYDRT at 9000. Expect RNAV (GPS) RWY 12L approach or visual approach as assigned by ATC.

LANDING KFNL/KGXY: From BRNKO on track 247° to cross PICKK at or below 14000, then on track 247° to cross BLTZZ at 12000 and at or below 250K, then on track 247° to cross ORRNG at 9000, then on track 247°. Expect RADAR vectors to final approach course.

LANDING KLMO: From BRNKO on track 247° to cross PICKK at or below 14000, then on track 247° to cross BLTZZ at 12000 and at or below 250K, then on track 247° to cross BWLIN at 10000, then on track 189° to cross REDZN at 10000, then on track 176° to cross HBALL at 9000, then on track 176°. Expect RADAR vectors to final approach course.

LOST COMMUNICATIONS

LANDING KAPA: From AAYES direct LOWRE and execute RNAV (GPS) RWY 17L approach.

LANDING KBJC: From PYDRT execute RNAV (GPS) RWY 12L approach.

LANDING KLMO: From HBALL direct KAYOO direct WOLTS and execute RNAV (GPS) RWY 29 approach.

LANDING KFNL/KGXY: Proceed to GLL VOR/DME, execute approach.

SW-1, 28 NOV 2024 to 26 DEC 2024

SW-1, 28 NOV 2024 to 26 DEC 2024