

DENVER DEP CON
132.75 269.3
ATIS
120.3
CLNC DEL
128.6

**TOP ALTITUDE:
ASSIGNED BY ATC**

DENVER
117.9 DEN : : :
Chan 126

HUGO
112.1 HGO : : : :
Chan 58

BLACK FOREST
112.5 BRK : : : :
Chan 72

PUEBLO
116.7 PUB : : : :
Chan 114

ALAMOS
113.9 ALS : : : :
Chan 86

TAKEOFF MINIMUMS

Rwys 10, 35L/R: Standard.

Rwy 17L: Standard with minimum climb of 255' per NM to 8000.

Rwy 17R: Standard with minimum climb of 370' per NM to 8000.

Rwy 28: Standard with minimum climb of 300' per NM to 8000.

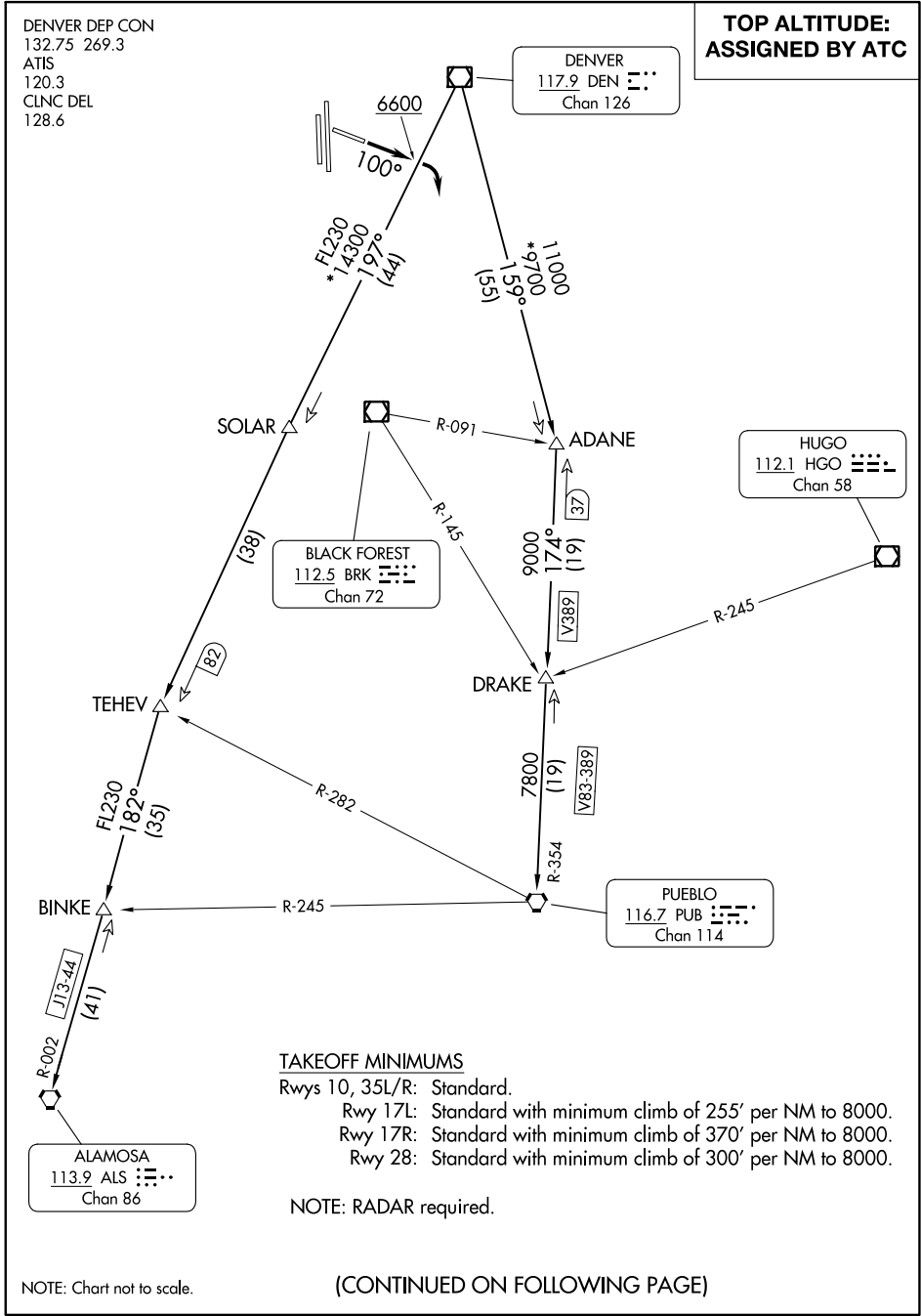
NOTE: RADAR required.

NOTE: Chart not to scale.

(CONTINUED ON FOLLOWING PAGE)

SW-1, 28 NOV 2024 to 26 DEC 2024

SW-1, 28 NOV 2024 to 26 DEC 2024





DEPARTURE ROUTE DESCRIPTION

TAKEOFF ALL RUNWAYS: Fly assigned heading and altitude for RADAR vectors to assigned route. Expect filed altitude 10 minutes after departure.

TAKEOFF RUNWAY 10: Climb on heading 100° to 6600 before turning right.

LOST COMMUNICATIONS: If no transmissions are received within one minute after departure, maintain assigned heading until 7000 feet, then climb to filed altitude via direct DEN VOR/DME, thence via assigned transition. If filed altitude is above 10000 feet, cross DEN VOR/DME at or above 11000 feet.

ALAMOSA TRANSITION (PIKES2.ALS): From over DEN VOR/DME on DEN R-197 to TEHEV, then on ALS R-002 to ALS VORTAC.

BINKE TRANSITION (PIKES2.BINKE): From over DEN VOR/DME on DEN R-197 to TEHEV, then on ALS R-002 to BINKE.

PUEBLO TRANSITION (PIKES2.PUB): From over DEN VOR/DME on DEN R-159 to ADANE, then on PUB R-354 to PUB VORTAC.

SW-1, 28 NOV 2024 to 26 DEC 2024

SW-1, 28 NOV 2024 to 26 DEC 2024