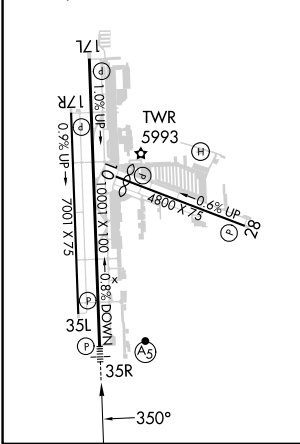
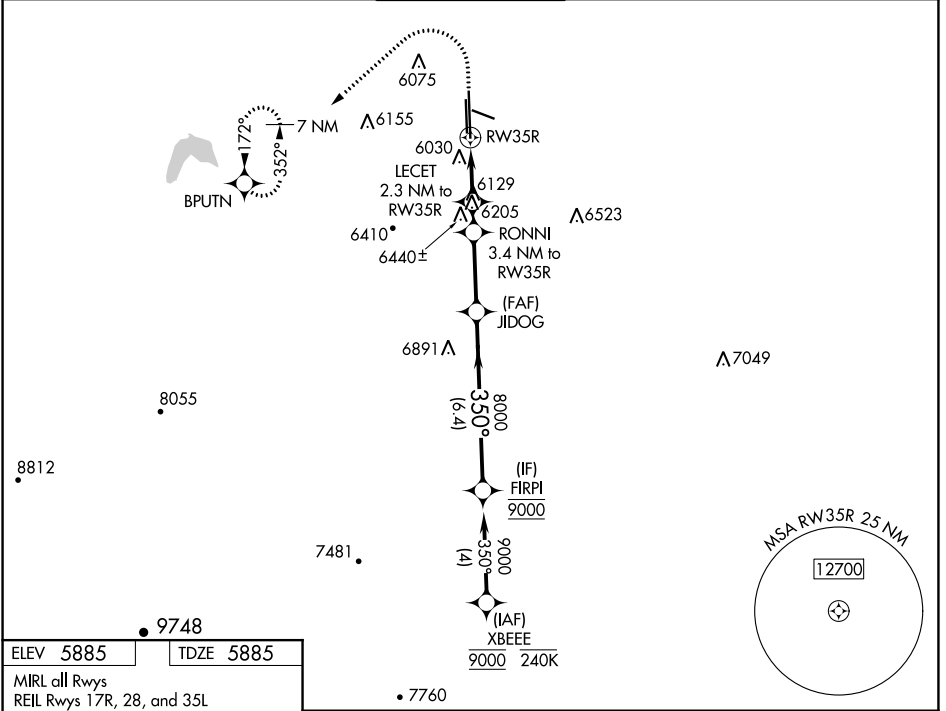


WAAS CH 40339 W35A	APP CRS 350°	Rwy Idg TDZE Apt Elev	10001 5885 5885
--	------------------------	-----------------------------	--

RNAV (GPS) RWY 35R

CENTENNIAL (APA)

RNP APCH.		MALS R	MISSED APPROACH: (Do not exceed 240K until BPUTN) Climb to 8200 then climbing left turn to 9600 direct BPUTN and hold.	
<p>▼ Circling Rwy 35L NA at night. For uncompensated Baro-VNAV systems, LNAV/VNAV NA below -21°C or above 54°C. For inop ALS, increase LNAV Cats C/D visibility to 1 3/8 SM.</p> <p>▲</p>				
ATIS 120.3	DENVER APP CON 132.75 269.3	CENTENNIAL TOWER 118.9	GND CON 121.8	CLNC DEL 128.6



8200	9600	BPUTN	FIRPI	
LE CET 2.3 NM to RW35R		RONNI 3.4 NM to RW35R	JIDOG 8000	FIRPI 9000
RW35R		7060	8000	GP 3.10° TCH 51
1.4 NM	0.9 NM	1.1 NM	2.9 NM	6.4 NM
CATEGORY	A	B	C	D
LPV DA	6085-1/2		200 (200-1/2)	
LNAV/VNAV DA	6324-3/4		439 (500-3/4)	
LNAV MDA	6380-1/2	495 (500-1/2)	6380-1	495 (500-1)
CIRCLING	6400-1 515 (600-1)	6540-1 655 (700-1)	6740-2 1/2 855 (900-2 1/2)	6760-2 3/4 875 (900-2 3/4)

SW-1, 28 NOV 2024 to 26 DEC 2024

SW-1, 28 NOV 2024 to 26 DEC 2024