

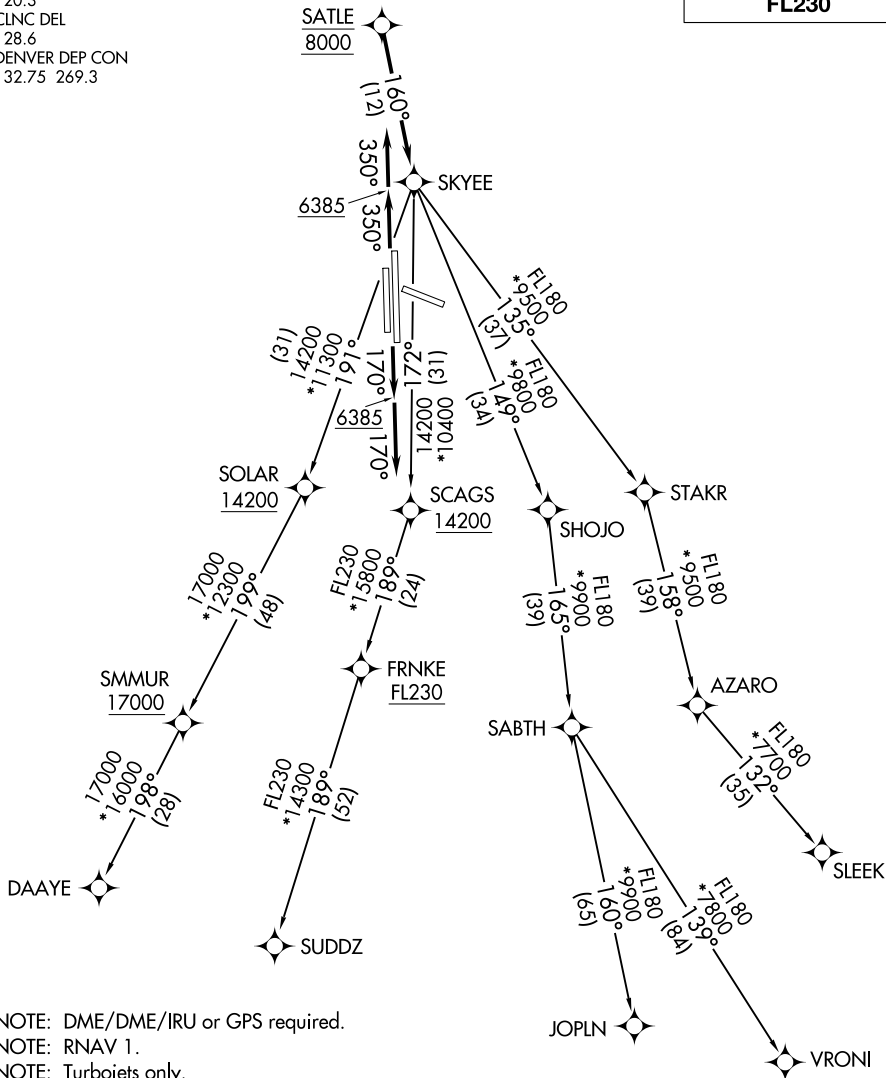
SKYEE ONE DEPARTURE (RNAV)

AL-5715 (FAA)

CENTENNIAL (APA)
DENVER, COLORADO

ATIS
120.3
CLNC DEL
128.6
DENVER DEP CON
132.75 269.3

**TOP ALTITUDE:
FL230**



NOTE: DME/DME/IRU or GPS required.
NOTE: RNAV 1.
NOTE: Turbojets only.
NOTE: RADAR required.

TAKEOFF MINIMUMS

Rwys 10, 28: NA.
Rwy 17L: Standard with minimum climb of 255' per NM to 8000.
Rwy 17R: Standard with minimum climb of 370' per NM to 8000.
Rwys 35L/R: Standard.

(NARRATIVE ON FOLLOWING PAGE)

NOTE: Chart not to scale.

SKYEE ONE DEPARTURE (RNAV)

SW-1, 28 NOV 2024 to 26 DEC 2024

SW-1, 28 NOV 2024 to 26 DEC 2024



DEPARTURE ROUTE DESCRIPTION

TAKEOFF RUNWAYS 17L/R: Climb on heading 170° to 6385, then on heading 170° or as assigned by ATC. Thence. . . .

TAKEOFF RUNWAYS 35L/R: Climb on heading 350° to 6385, then on heading 350° or as assigned by ATC. Thence. . . .

. . . .expect RADAR vectors to cross SATLE at 8000 then on track 160° to SKYEE then on (transition) maintain FL230 or filed lower altitude. Expect higher filed altitude ten minutes after departure.

DAAYE TRANSITION (SKYEE1 .DAAYE)

JOPLN TRANSITION (SKYEE1 .JOPLN)

SLEEK TRANSITION (SKYEE1 .SLEEK)

SUDDZ TRANSITION (SKYEE1 .SUDDZ)

VRONI TRANSITION (SKYEE1 .VRONI)

SW-1, 28 NOV 2024 to 26 DEC 2024

SW-1, 28 NOV 2024 to 26 DEC 2024