

VORTAC RZS 114.9 Chan 96	APP CRS 097°	Rwy Idg TDZE 674 Apt Elev 674	2803
--	------------------------	---	-------------

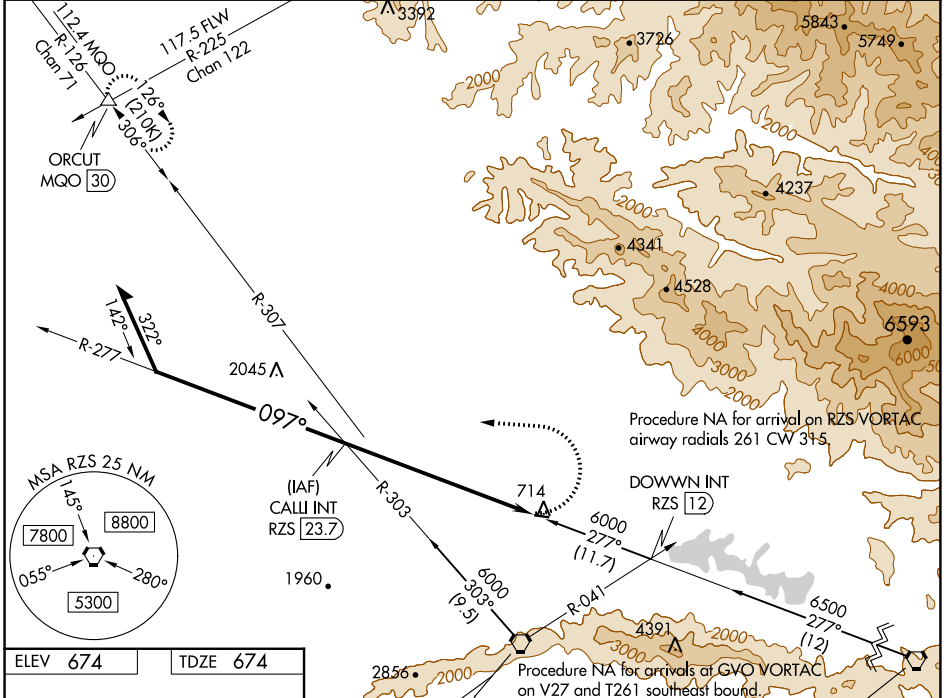
VOR RWY 8

SANTA YNEZ/KUNKLE FLD (IZA)

⚠ Straight-in Rwy 8 NA at night. Circling Rwy 8 NA at night.
⚠ Rwy 8 helicopter visibility reduction below 1 SM NA.

MISSED APPROACH: Climbing left turn to 6000 on heading 285° and on GVO VORTAC R-307 and MQO VORTAC R-126 to ORCUT INT and hold.

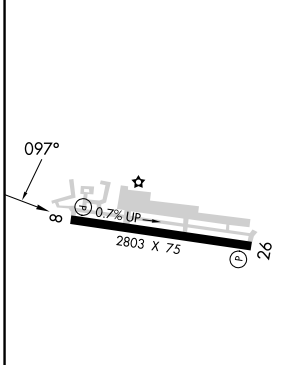
AWOS-3PT 118.075	SANTA BARBARA APP CON* 124.15 327.8	UNICOM 122.8 (CTAF) 0
----------------------------	---	---------------------------------



SW-3, 28 NOV 2024 to 26 DEC 2024

SW-3, 28 NOV 2024 to 26 DEC 2024

ELEV 674	TDZE 674
-----------------	-----------------

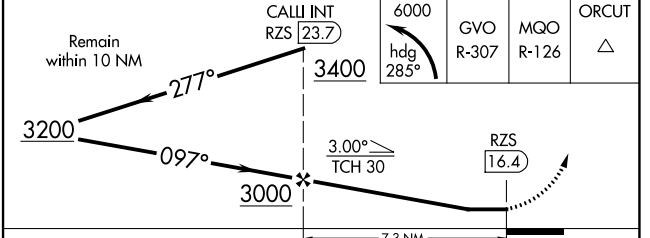


REIL Rws 8 and 26 **Ⓛ**
MIRL Rwy 8-26 **Ⓛ**

FAF to MAP 7.3 NM

Knots	60	90	120	150	180
Min:Sec	7:18	4:52	3:39	2:55	2:26

GAVIOTA 113.8 GVO Chan 85	SAN MARCUS 114.9 RZS Chan 96
---------------------------------	------------------------------------



CATEGORY	A	B	C	D
S-8	2040-1¼ 1366 (1400-1¼)	2040-1½ 1366 (1400-1½)		NA
Ⓛ CIRCLING	2040-1¼ 1366 (1400-1¼)	2040-1½ 1366 (1400-1½)		NA