

TULLAHOMA, TENNESSEE

RNAV (GPS) RWY 3

APCH CRS	Rwy Idg	6001
027°	TDZE	1065
	Arprt Elev	1065

- (USAF)

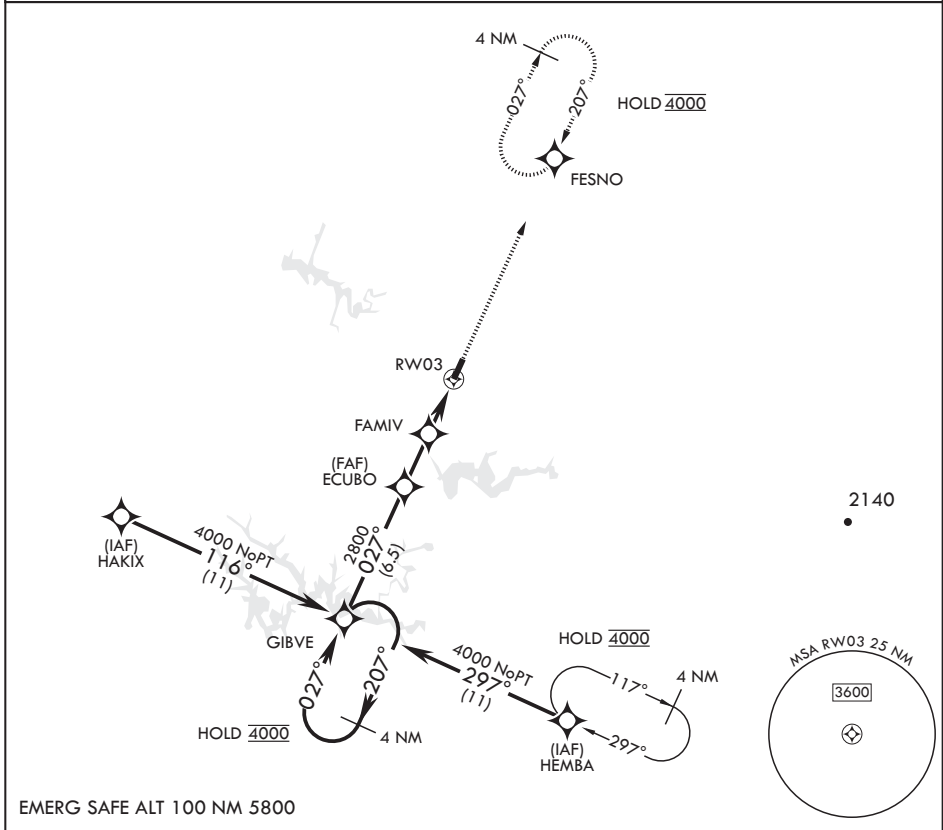
ARNOLD AFB (KAYX)

RNP APCH

MISSED APPROACH: Climb to 4000 direct FESNO and hold, continue climb-in-hold to 4000.

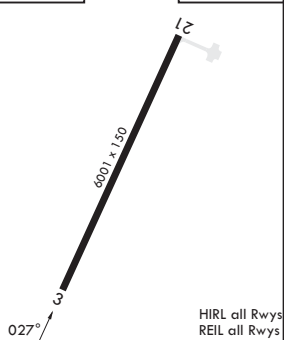
* Circling not authorized NW of RWY 3-21.

UNICOM
126.2 (CTAF) 257.975 (CTAF)



EMERG SAFE ALT 100 NM 5800

4 NM Holding Pattern GIBVE 4000 207° 027° 4000 † FAMIV to RW03 3.12° ≥ † TCH 40	4000 FESNO ELEV 1065 TDZE 1065			
	ECUBO 2800 FAMIV 2000 1 NM to RW03 RW03 2.6 NM 2.7 NM			
CATEGORY	A	B	C	D
RNAV MDA	1420-1	355	(400-1)	
CIRCLING*	1520-1 455 (500-1)	1620-1 555 (600-1)	1640-1½ 575 (600-1½)	1800-2¼ 735 (800-2¼)



TULLAHOMA, TENNESSEE

35°24'N - 86°05'W

ARNOLD AFB (KAYX)

Orig 19MAY22

RNAV (GPS) RWY 3

SE-1, 28 NOV 2024 to 26 DEC 2024

SE-1, 28 NOV 2024 to 26 DEC 2024

HIRL all Rwys
REIL all Rwys