

(MAREO5.MAREO) 23334
MAREO FIVE DEPARTURE

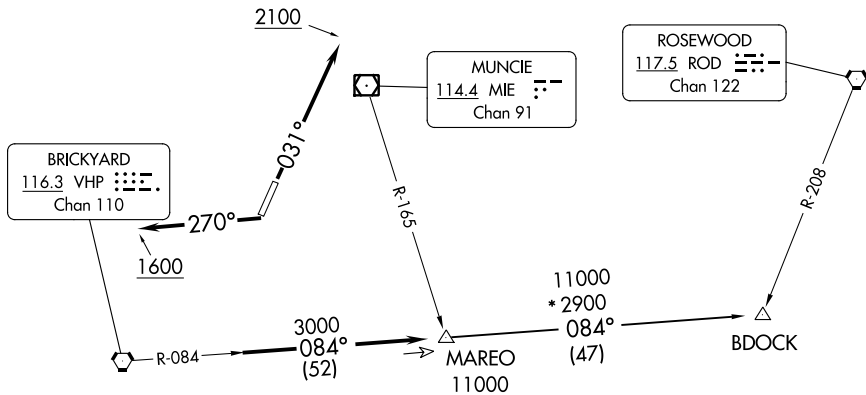
AL-5733 (FAA)

EAGLE CREEK AIRPARK (EYE)
 INDIANAPOLIS, INDIANA

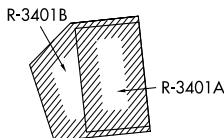
ASOS
 121.575
 CLNC DEL
 128.6
 INDIANAPOLIS DEP CON
 119.05 317.8

TAKEOFF MINIMUMS
 Rwy's 3, 21: Standard.

**TOP ALTITUDE:
 ASSIGNED BY ATC**



- NOTE: RADAR required.
- NOTE: Select appropriate localizer/DME frequency/channel prior to departure.
- NOTE: Turbojets accelerate to 250K until reaching 10000, if unable advise ATC.
- NOTE: Assigned to aircraft with a requested altitude of 11000 or above.



NOTE: Chart not to scale.

DEPARTURE ROUTE DESCRIPTION

TAKEOFF RWY 3: Climb heading 031° to 2100, then on assigned heading to assigned altitude. Thence....

TAKEOFF RWY 21: Climb heading 270° to 1600, then on assigned heading to assigned altitude. Thence....

....expect RADAR vectors to join VHP R-084 to MAREO INT then via transition or assigned route. Expect clearance to requested altitude ten minutes after departure.

BDOCK TRANSITION (MAREO5.BDOCK): From over MAREO INT via VHP R-084 to BDOCK INT.