

WAAS CH 72619 W18A	APP CRS 183°	Rwy Idg 5404 TDZE 173 Apt Elev 173
--	------------------------	---

RNAV (GPS) RWY 18

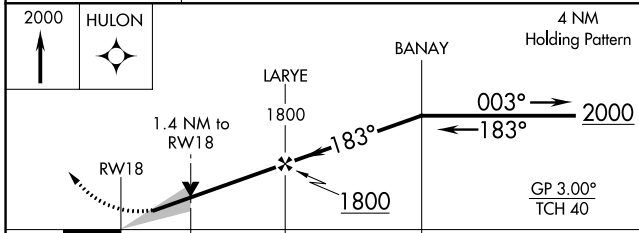
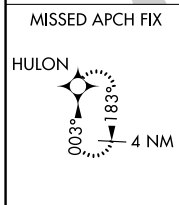
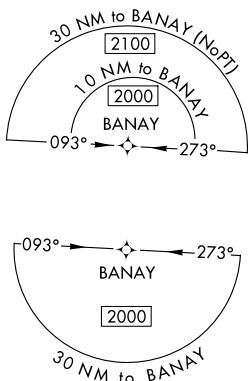
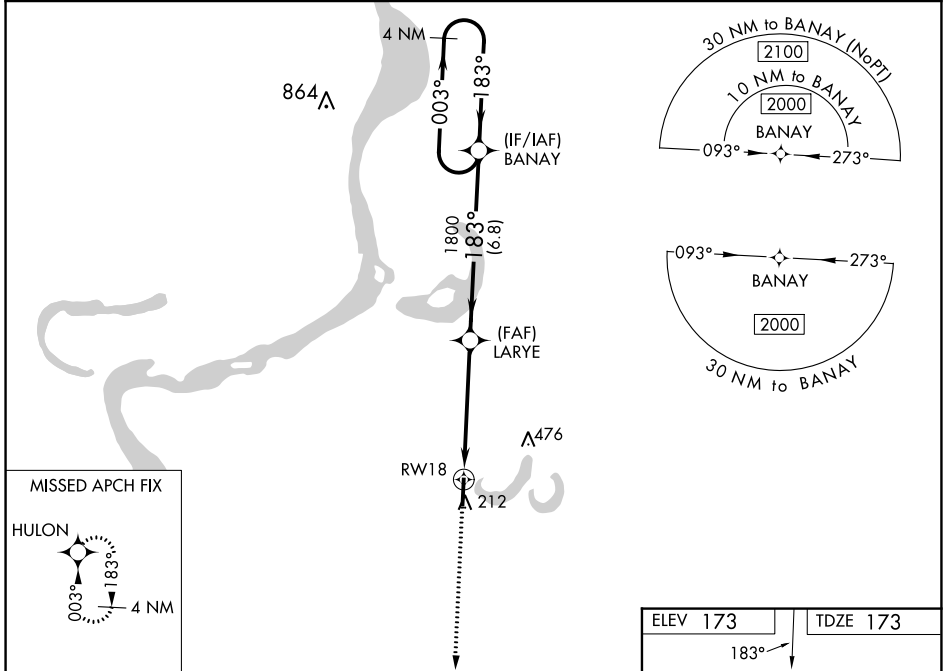
FLETCHER FLD (CKM)

RNP APCH-GPS.

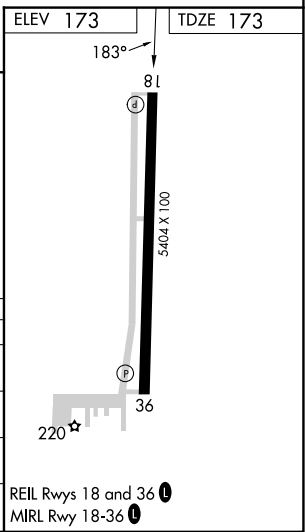
⚠ For uncompensated Baro-VNAV systems, LNAV/VNAV NA below -15°C or above 54°C. Baro-VNAV and VDP NA when using Tunica altimeter setting. When local altimeter setting not received, use Tunica altimeter setting: increase LPV DA to 483 feet, LNAV/VNAV DA to 647 feet and all MDA 60 feet; increase LPV all Cats visibility 1/8 SM, LNAV/VNAV all Cats visibility 1/4 SM, and LNAV Cat C/D visibility 1/8 SM. Circling Rwy 36 NA at night.

MISSED APPROACH:
Climb to 2000 direct HULON and hold.

AWOS-3 120.675	MEMPHIS CENTER 135.3 335.8	UNICOM 122.8 (CTAF) 0
--------------------------	--------------------------------------	---------------------------------



CATEGORY	A	B	C	D
LPV DA	423-7/8		250 (300-7/8)	
LNAV/VNAV DA	587-13/8		414 (500-13/8)	
LNAV MDA	640-1	467 (500-1)	640-13/8	467 (500-13/8)
C CIRCLING	740-1	567 (600-1)	780-13/4 607 (700-13/4)	780-2 607 (700-2)



SC-4, 28 NOV 2024 to 26 DEC 2024

SC-4, 28 NOV 2024 to 26 DEC 2024