

APP CRS	Rwy Idg	<b>3013</b>
<b>092°</b>	TDZE	<b>197</b>
	Apt Elev	<b>197</b>

# RNAV (GPS) RWY 9

WETUMPKA MUNI (Ø8A)

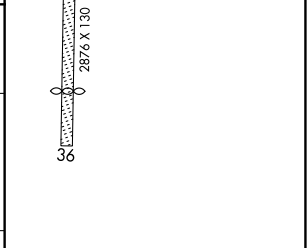
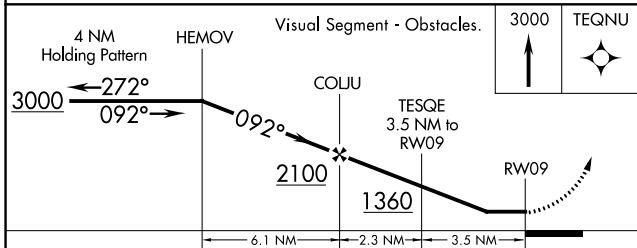
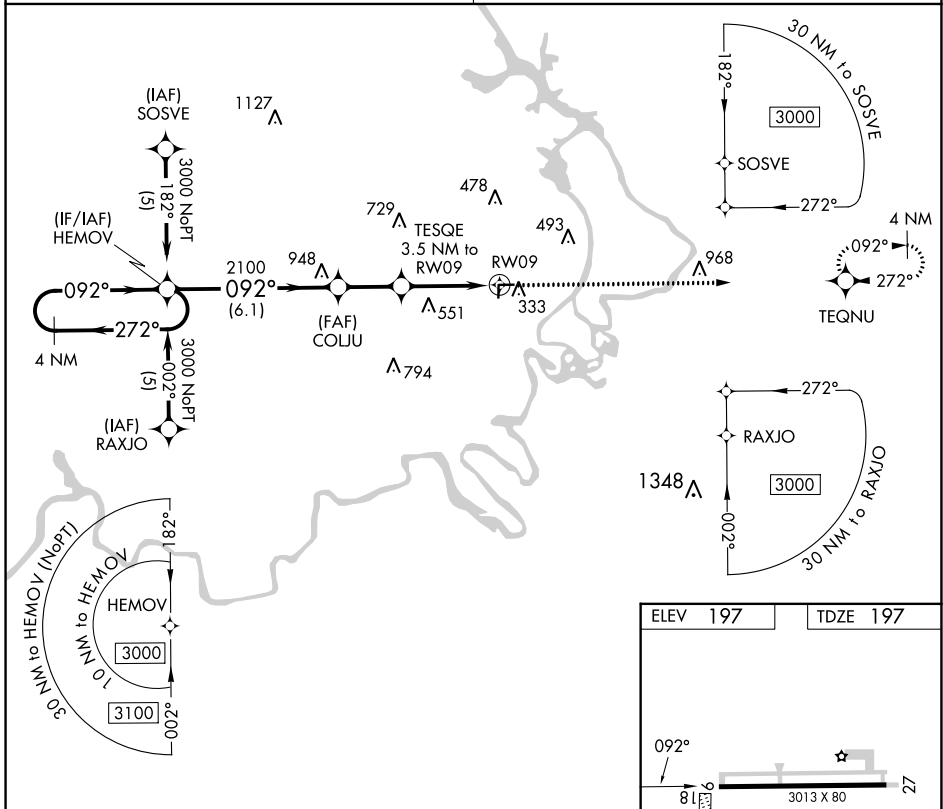
RNP APCH.

▼ Rwy 9 helicopter visibility reduction below 1 SM NA. Procedure NA at night.  
 ▲ NA Use Montgomery Rgnl (Dannelly Fld) altimeter setting; when not received, use Alexander City altimeter setting and increase all MDA 120 feet and increase LNAV Cat A visibility ¼ SM and LNAV Cat C visibility ½ SM.

MISSED APPROACH: Climb to 3000 direct TEQNU and hold.

MONTGOMERY APP CON ★  
**121.2 269.05**

UNICOM  
**123.05 (CTAF) 0**



CATEGORY	A	B	C	D
LNAV MDA	1000-1 803 (900-1)	1000-1¼ 803 (900-1¼)	1000-2¼ 803 (900-2¼)	NA

REIL Rwy 9 and 27  
 MIRL Rwy 9-27 0

SE-4, 28 NOV 2024 to 26 DEC 2024

SE-4, 28 NOV 2024 to 26 DEC 2024