

WAAS CH 87140 W03A	APP CRS 029°	Rwy Idg TDZE Apt Elev	5000 349 364
--	------------------------	-----------------------------	---

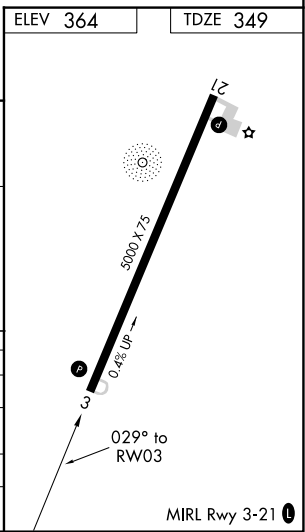
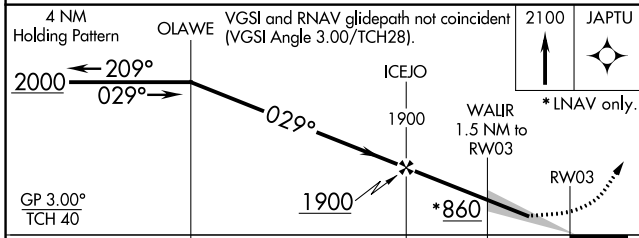
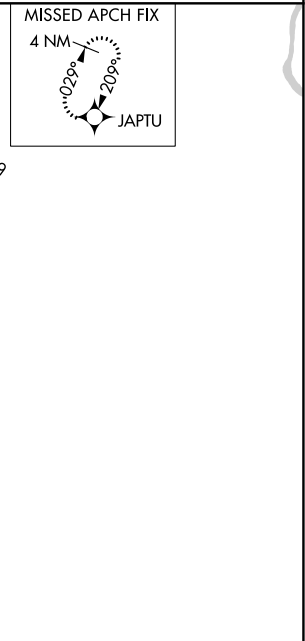
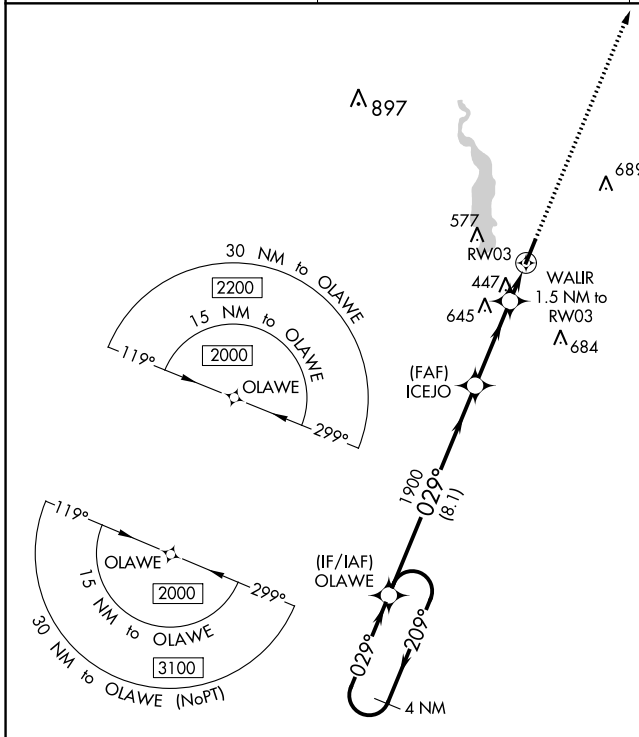
RNAV (GPS) RWY 3

HARTSVILLE RGNL (HVS)

▼ For uncompensated Baro-VNAV systems, LNAV/VNAV NA below -9°C (15°F) or above 54°C (130°F). DME/DME RNP-0.3 NA.

MISSED APPROACH: Climb to 2100 direct JAPTU and hold.

AWOS-3 118.225	SHAW APP CON ★ 125.4 318.1	UNICOM 122.8 (CTAF) 0
--------------------------	--------------------------------------	---------------------------------



4 NM Holding Pattern	OLAWE	VGSI and RNAV glidepath not coincident (VGSI Angle 3.00/TCH28).	2100	JAPTU
2000	← 209°	→ 029°	↑	★
GP 3.00° TCH 40		1900	* LNAV only.	
	8.1 NM	3.3 NM	1.5 NM	
CATEGORY	A	B	C	D
LPV DA	599-1	250 (300-1)		NA
LNAV/VNAV DA	599-1	250 (300-1)		NA
LNAV MDA	700-1	351 (400-1)		NA
Ⓢ CIRCLING	800-1 436 (500-1)	840-1 476 (500-1)	960-1½ 596 (600-1½)	NA

SE-2, 28 NOV 2024 to 26 DEC 2024

SE-2, 28 NOV 2024 to 26 DEC 2024