

VOR/DME CTF	APP CRS	Rwy Idg TDZE	N/A
114.55	155°	Apt Elev	N/A
Chan 92 (Y)			364

# VOR-A

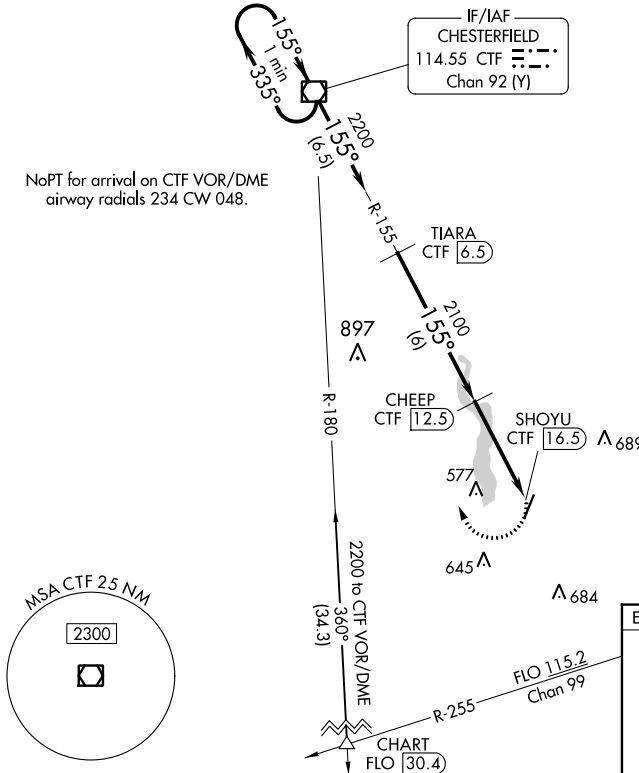
HARTSVILLE RGNL (HVS)

**▼** DME required. MISSED APPROACH: Climbing right turn to 2200 direct CTF VOR/DME and hold.

AWOS-3 <b>118.225</b>	SHAW APP CON ★ <b>125.4 318.1</b>	UNICOM <b>122.8 (CTAF) 0</b>
--------------------------	--------------------------------------	---------------------------------

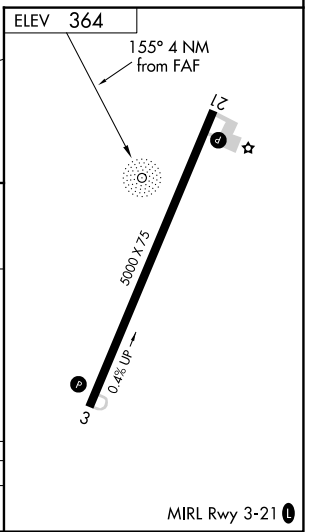
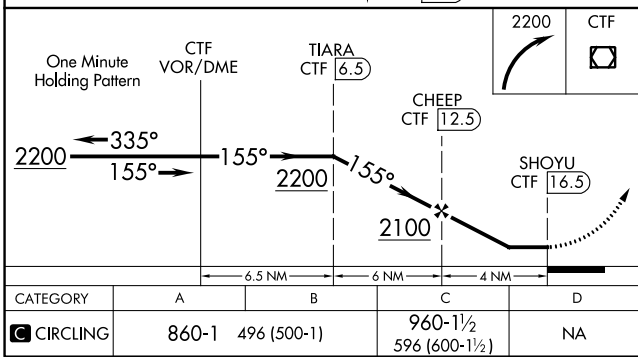
## DME REQUIRED

NoPT for arrival on CTF VOR/DME airway radials 234 CW 048.



SE-2, 28 NOV 2024 to 26 DEC 2024

SE-2, 28 NOV 2024 to 26 DEC 2024



CATEGORY	A	B	C	D
CIRCLING	860-1	496 (500-1)	960-1½ 596 (600-1½)	NA

MIRL Rwy 3-21 0