

|  |                        |                             |   |
|--|------------------------|-----------------------------|---|
| WAAS<br>CH <b>56513</b><br><b>W04A</b> | APP CRS<br><b>042°</b> | Rwy Idg<br>TDZE<br>Apt Elev | <b>7099</b><br><b>158</b><br><b>158</b> |
|--|------------------------|-----------------------------|---|

# RNAV (GPS) RWY 4

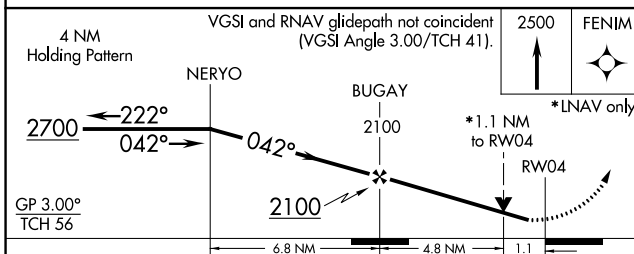
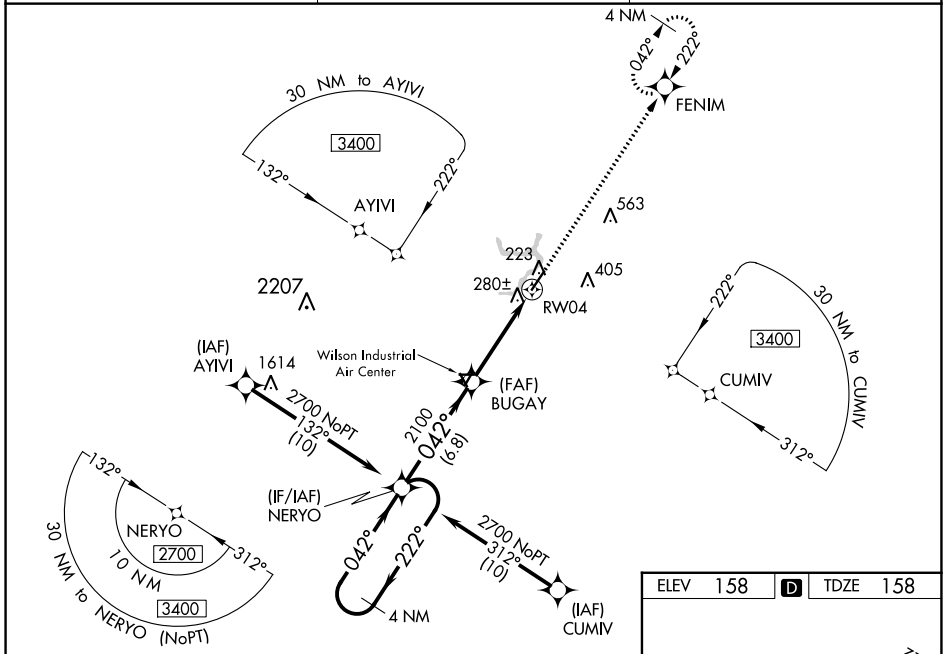
ROCKY MOUNT/WILSON RGNL (R.WI)

**⚠** Inop table does not apply to LPV when using local altimeter setting. For uncompensated Baro-VNAV systems, LNAV/VNAV NA below -10°C (14°F) or above 54°C (130°F).  
**⚠** When local altimeter setting not received, use Wayne Exec Jetport altimeter setting and increase LPV DA to 467; increase LNAV/VNAV DA to 601 and all Cats visibility ¼ mile; increase all MDA 60 feet and LNAV Cats C/D and Circling Cat C visibility ¼ mile.  
 For inop MALSR, increase LNAV Cat A/B visibility to 1 mile. DME/DME RNP-0.3 NA.  
 Baro-VNAV and VDP NA when using Wayne Exec Jetport altimeter setting.  
 Rwy 4 helicopter visibility reduction below ¼ SM NA.

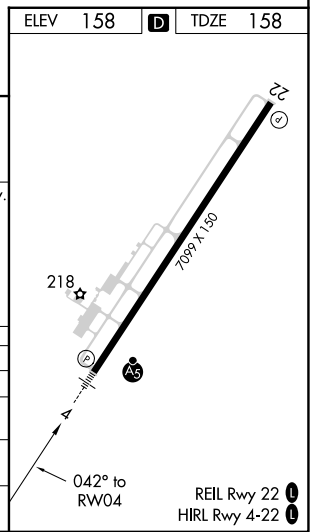
**MALSR**

**MISSED APPROACH:**  
Climb to 2500 direct FENIM and hold.

|                        |   |                                  |
|------------------------|---|----------------------------------|
| ASOS<br><b>118.875</b> | WASHINGTON CENTER<br><b>123.85 279.65</b> | UNICOM<br><b>123.05 (CTAF) ①</b> |
|------------------------|---|----------------------------------|



| CATEGORY          | A                    | B                    | C                      | D                    |
|-------------------|----------------------|----------------------|------------------------|----------------------|
| LPV DA            |                      | 408-¾                | 250 (300-¾)            |                      |
| LNAV/VNAV DA      |                      | 542-¾                | 384 (400-¾)            |                      |
| LNAV MDA          |                      | 560-¾                | 402 (500-¾)            |                      |
| <b>C</b> CIRCLING | 600-1<br>442 (500-1) | 620-1<br>462 (500-1) | 720-1½<br>562 (600-1½) | 760-2<br>602 (700-2) |



SE-2, 28 NOV 2024 to 26 DEC 2024

SE-2, 28 NOV 2024 to 26 DEC 2024

# RNAV (GPS) RWY 4