

| | | | |
|-------------|---------|----------|------|
| VOR/DME AIR | APP CRS | Rwy ldg | 3805 |
| 117.1 | 229° | TDZE | 1197 |
| Chan 118 | | Apt Elev | 1197 |

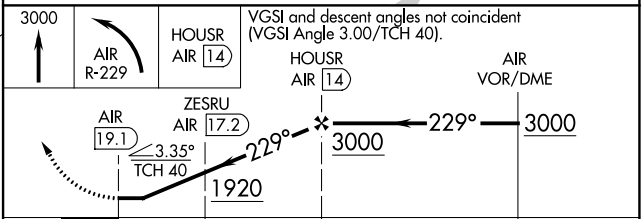
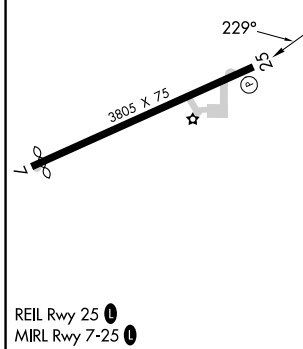
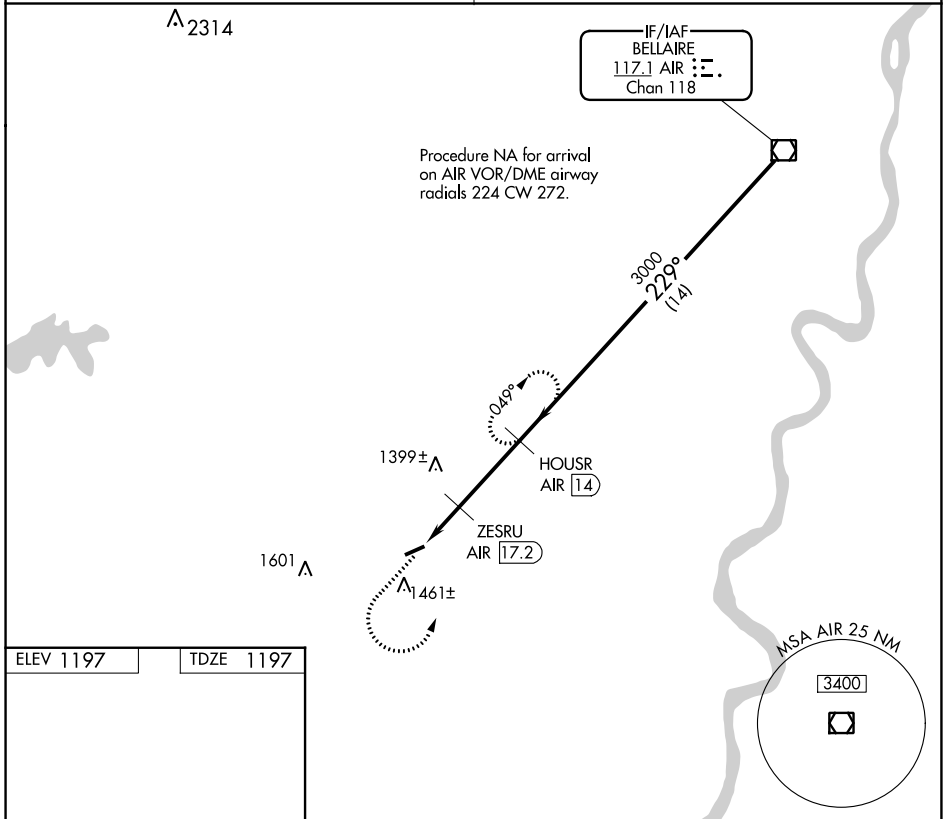
VOR/DME RWY 25

MONROE COUNTY (4G5)

▼ Use Wheeling Ohio Co, WV alimeter setting; when not received use Parkersburg, WV alimeter setting and increase all MDA 60 feet; increase S-25 Cat C visibility 1/8 mile and Circling Cat C visibility 1/4 mile. Procedure NA at night.
▲ NA Rwy 25 helicopter visibility reduction below 1 SM NA.

MISSED APPROACH: Climb to 3000 then left turn on AIR VOR/DME R-229 to HOUSR/AIR 14 DME and hold.

| | |
|------------------|-----------------------|
| CLEVELAND CENTER | UNICOM |
| 126.95 239.3 | 122.8 (CTAF) 0 |



| CATEGORY | A | B | C | D |
|-------------------|--------|-------------|-------------------------------|----|
| S-25 | 1740-1 | 543 (600-1) | 1740-1 5/8 543 (600-1 5/8) | NA |
| C CIRCLING | 1860-1 | 663 (700-1) | 1860-1 3/4 663 (700-1 3/4) | NA |