

VORTAC CSN 116.3 Chan 110	APP CRS 119°	Rwy Idg TDZE 327 Apt Elev 336
---	------------------------	---

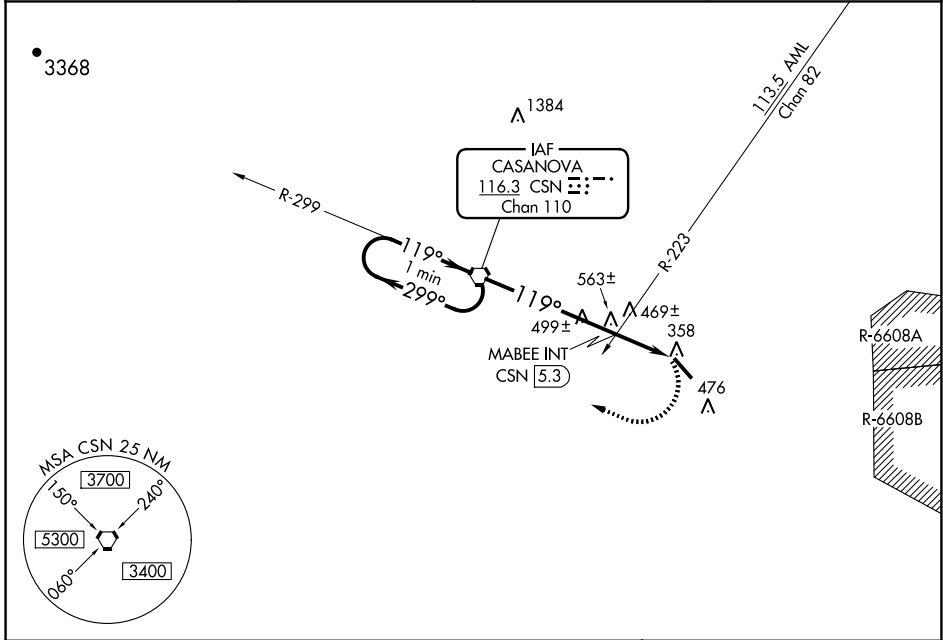
VOR RWY 15

WARRENTON/FAUQUIER (HWY)

⚠ When local altimeter setting not received, use Culpeper altimeter setting and increase all MDA 40 feet; increase S-15 Cats C/D and Circling Cats C/D visibility ½ SM; increase MABEE fix minimums S-15 Cats C/D and Circling Cat D visibility ¼ SM. Helicopter visibility reduction below ¾ SM NA.

MISSED APPROACH: Climbing right turn to 2800 direct to CSN VORTAC and hold.

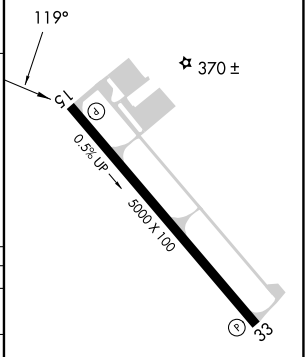
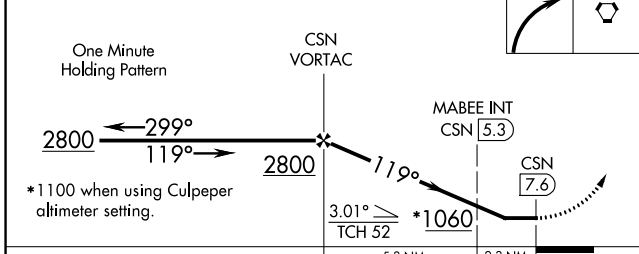
AWOS-3 120.350	CJR AWOS-3 119.325	POTOMAC APP CON 128.525 306.925	UNICOM 122.7 (CTAF) 0
--------------------------	------------------------------	---	---------------------------------



NE-3, 28 NOV 2024 to 26 DEC 2024

NE-3, 28 NOV 2024 to 26 DEC 2024

2800	CSN	ELEV 336	TDZE 327
------	-----	----------	----------



CATEGORY	A	B	C	D
S-15	1060-1 733 (800-1)	1060-1¼ 733 (800-1¼)	1060-2 733 (800-2)	1060-2¼ 733 (800-2¼)
CIRCLING	1060-1	724 (800-1)	1060-2 724 (800-2)	1060-2¼ 724 (800-2¼)
MABEE FIX MINIMUMS (DUAL VOR RECEIVERS OR DME REQUIRED)				
S-15	820-1	493 (500-1)	820-1⅜	493 (500-1⅜)
CIRCLING	820-1	484 (500-1)	880-1½ 544 (600-1½)	980-2 644 (700-2)

REIL Rws 15 and 33
HIRL Rwy 15-33 0

FAF to MAP 7.6 NM					
Knots	60	90	120	150	180
Min:Sec	7:36	5:04	3:48	3:02	2:32