

WAAS CH 81909 W35A	APP CRS 352°	Rwy Idg TDZE 3176 Apt Elev 3188	5110 3176 3188
--	------------------------	---	---

RNAV (GPS) RWY 35

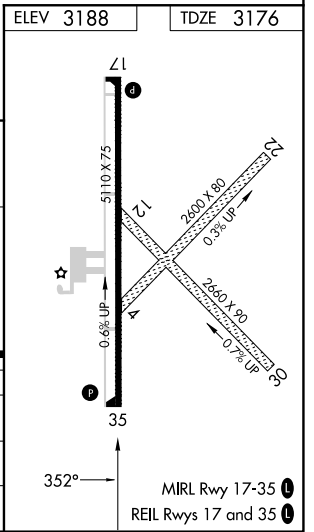
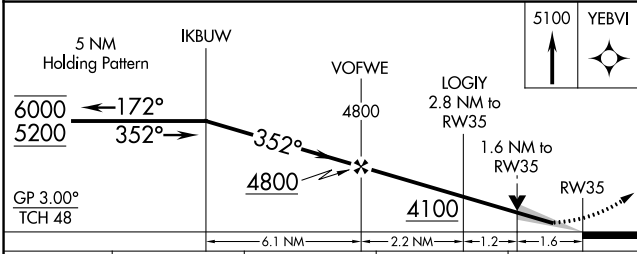
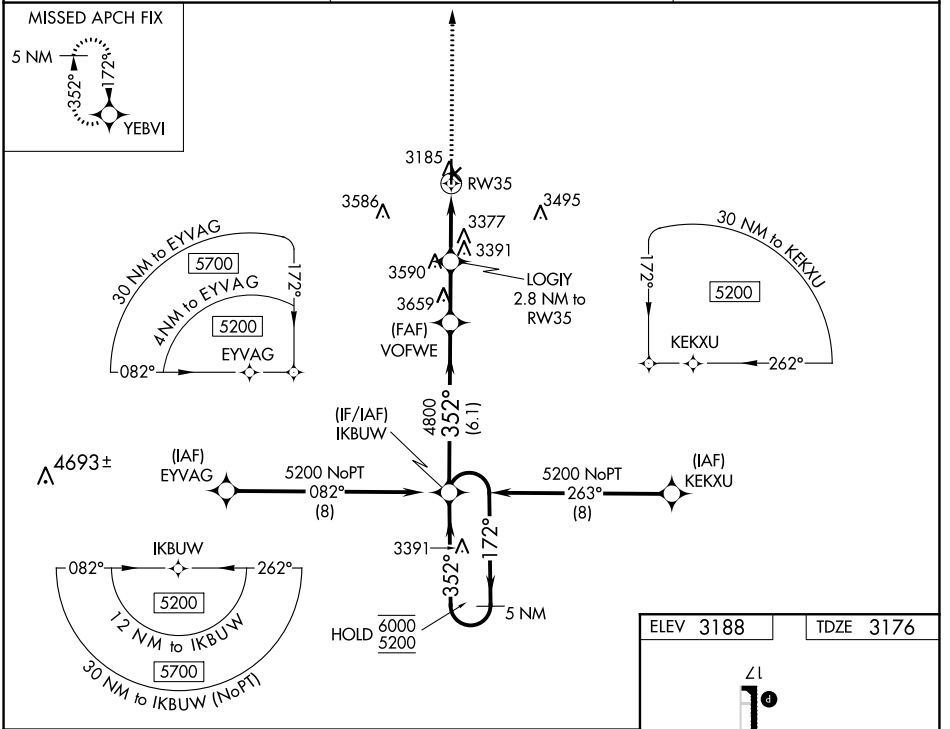
SHALZ FLD (CBK)

RNP APCH-GPS.

Baro-VNAV and VDP NA when using Goodland altimeter setting. For uncompensated Baro-VNAV systems, LNAV/VNAV NA below -21°C or above 54°C. When local altimeter setting not received, use Goodland altimeter setting: increase LPV DA to 3511 feet and visibility ¼ SM, LNAV/VNAV DA to 3561 feet and visibility ⅓ SM; increase all MDAs 140 feet and visibility Cat C ⅓ SM.

MISSED APPROACH:
Climb to 5100 direct YEBVI and hold.

AWOS-3P 118.175	DENVER CENTER 132.7 226.675	UNICOM 122.8 (CTAF)
---------------------------	---------------------------------------	-------------------------------



CATEGORY	A	B	C	D
LPV DA	3376-¾ 200 (200-¾)			NA
LNAV/VNAV DA	3426-¾ 250 (300-¾)			NA
LNAV MDA	3700-1	524 (600-1)	3700-1½ 524 (600-1½)	NA

NC-2, 28 NOV 2024 to 26 DEC 2024

NC-2, 28 NOV 2024 to 26 DEC 2024