

APP CRS <b>011°</b>	Rwy Idg TDZE Apt Elev	<b>N/A</b> <b>N/A</b> <b>5</b>
------------------------	-----------------------------	--------------------------------------

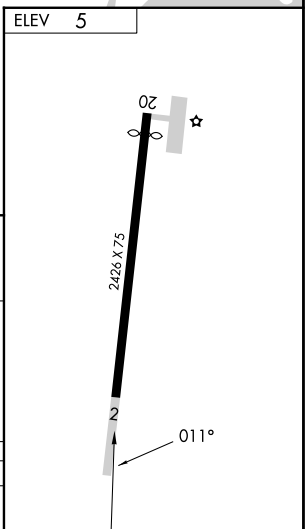
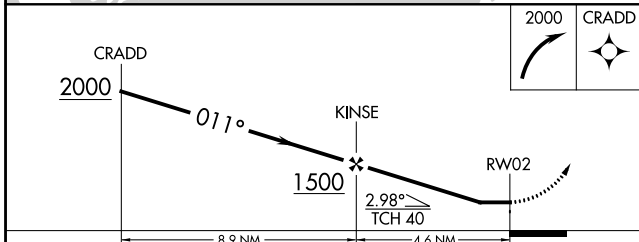
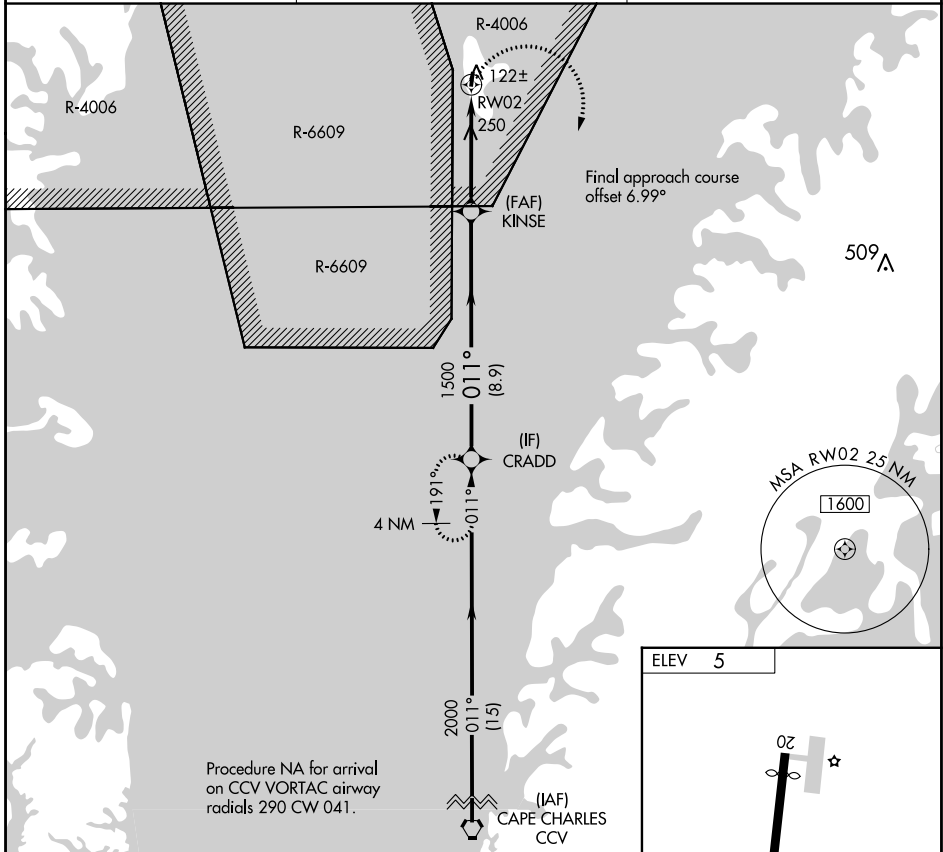
# RNAV (GPS)-B

## TANGIER ISLAND (TGI)

**▼** DME/DME RNP-0.3 NA. When local altimeter setting not received, use Patuxent River NAS altimeter setting and increase all MDAs 100 feet. Specific clearance from Patuxent App Con required before proceeding northbound from CRADD. Approach is within R-6609 and underlies R-4006. Procedure NA at night.

**MISSED APPROACH:**  
Climbing right turn to 2000  
direct CRADD and hold.

AWOS-3 <b>119.8</b>	PATUXENT APP CON ★ <b>121.0 250.3</b>	UNICOM <b>122.8 (CTAF)</b>
------------------------	--	-------------------------------



CATEGORY	A	B	C	D
<b>CIRCLING</b>	560-1	555 (600-1)		NA

NE-3, 28 NOV 2024 to 26 DEC 2024

NE-3, 28 NOV 2024 to 26 DEC 2024