

| | | | |
|---|------------------------|-----------------------------|---|
| LOC/DME I-RBW 110.15 Chan 38 (Y) | APP CRS 229° | Rwy ldg TDZE Apt Elev | 6002 101 101 |
|---|------------------------|-----------------------------|---|

ILS Y or LOC Y RWY 23

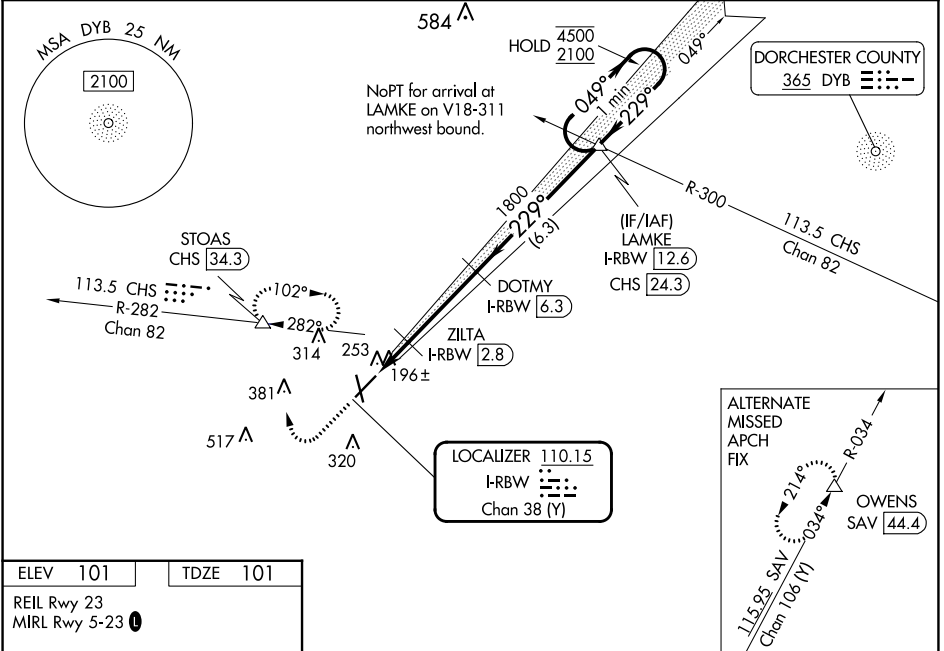
LOWCOUNTRY RGNL (R.B.W)

DME required.

ODALS

MISSED APPROACH: Climb to 700 then climbing right turn to 2000 on heading 360° and CHS VORTAC R-282 to STOAS/CHS VORTAC 34.3 DME and hold, continue climb-in-hold to 2000, or as directed by ATC.

| | | |
|----------------------------|--|-------------------------------|
| AWOS-3PT 118.725 | CHARLESTON APP CON 120.7 306.925 | UNICOM 122.8 (CTAF) |
|----------------------------|--|-------------------------------|



ELEV 101 TDZE 101

REIL Rwy 23
MIRL Rwy 5-23

FAF to MAP 5.2 NM

| | | | | | |
|---------|------|------|------|------|------|
| Knots | 60 | 90 | 120 | 150 | 180 |
| Min:Sec | 5:12 | 3:28 | 2:36 | 2:05 | 1:44 |

700 2000

↑ hdg 360°

STOAS CHS R-282

VGSI and ILS glidepath not coincident (VGSI Angle 3.00/TCH 46).

One Minute Holding Pattern

ZILTA I-RBW 2.8

DOTMY I-RBW 6.3

LAMKE I-RBW 12.6

1800 049° 4500 2100

229° 1800

GS 3.00° TCH 43

1 I-RBW 1.1 2.1 6.3 6.3 NM

1 NM 0.7 3.5 NM

| CATEGORY | A | B | C | D |
|--|-------------------|-------------|------------------------|----------------------|
| S-ILS 23 | 301-¾ 200 (200-¾) | | | |
| S-LOC 23 | 460-¾ | 359 (400-¾) | 460-⅞ | 359 (400-⅞) |
| <input checked="" type="checkbox"/> CIRCLING | 620-1 | 519 (600-1) | 700-1½ 599 (600-1½) | 700-2 599 (600-2) |

SE-2, 28 NOV 2024 to 26 DEC 2024

SE-2, 28 NOV 2024 to 26 DEC 2024