

LOC I-MCB 109.1	APP CRS 157°	Rwy Idg 5000
		TDZE 413
		Apt Elev 413

ILS or LOC RWY 16

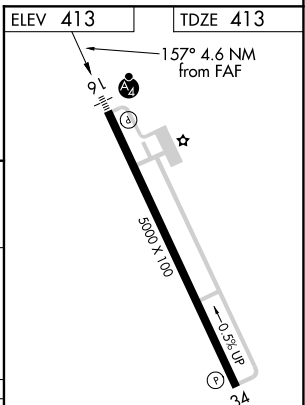
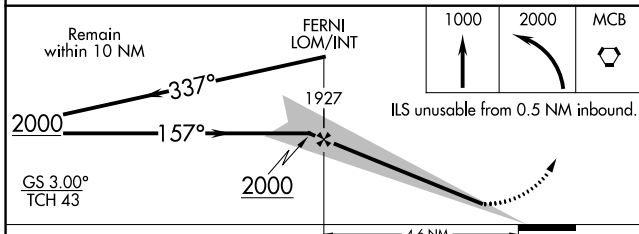
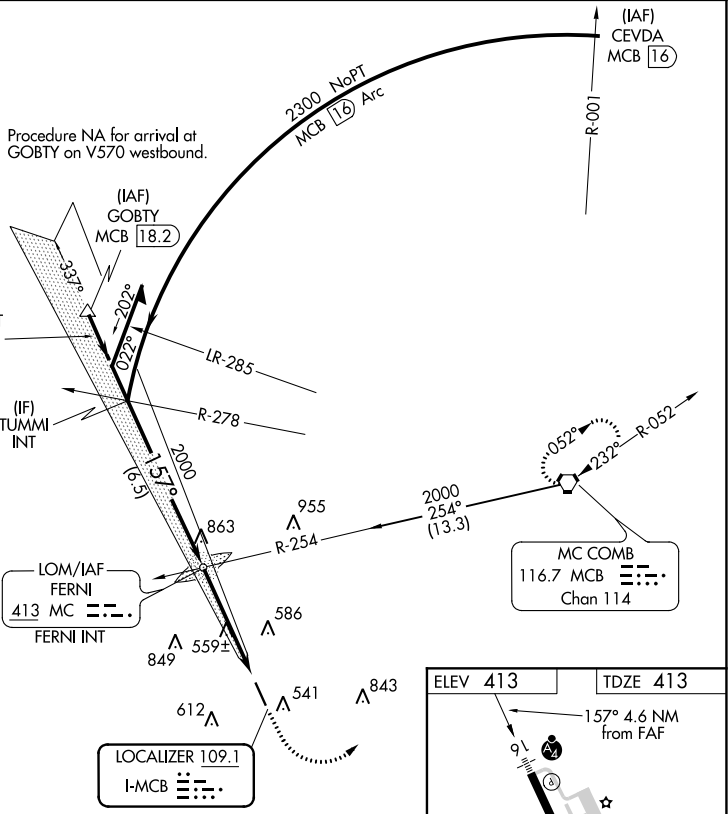
MC COMB/PIKE COUNTY/JOHN E LEWIS FLD (MCB)

<p>▽ Inop table does not apply to S-ILS 16 all Cats and S-LOC 16 Cats C and D.</p>	<p>MALSF</p>	<p>MISSED APPROACH: Climb to 1000 then climbing left turn to 2000 direct MCB VORTAC and hold.</p>
---	---------------------	---

ASOS 119.025	HOUSTON CENTER 126.8 327.8	UNICOM 123.05 (CTAF) 0
------------------------	--------------------------------------	----------------------------------

ALT MISSED APCH FIX

FERNI
413 MC



CATEGORY	A	B	C	D	FAF to MAP 4.1 NM					
S-ILS 16	632-3/4 219 (300-3/4)				Knots	60	90	120	150	180
S-LOC 16	820-3/4	407 (500-3/4)	820-1/4	407 (500-1/4)	Min:Sec	4:06	2:44	2:03	1:38	1:22
C CIRCLING	880-1	467 (500-1)	940-1/2	1160-2/2						
			527 (600-1/2)	747 (800-2/2)						

SC-4, 28 NOV 2024 to 26 DEC 2024

SC-4, 28 NOV 2024 to 26 DEC 2024