

# HI-ILS or LOC RWY 21

LOC/DME I-GTB <b>108.5</b> Chan <b>22</b>	APCH CRS <b>209°</b>	Rwy ldg <b>10,000</b> TDZE <b>677</b> Arprt Elev <b>690</b>	[USA]	WHEELER-SACK AAF (KGTB)
---	-------------------------	---	-------	-------------------------

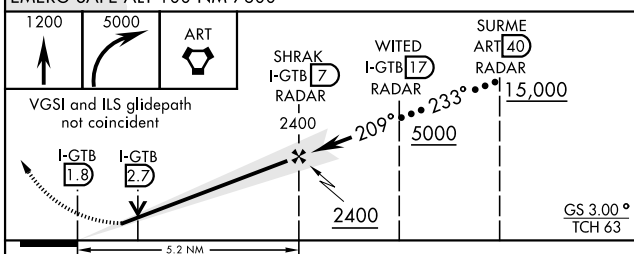
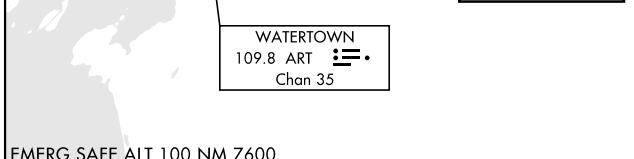
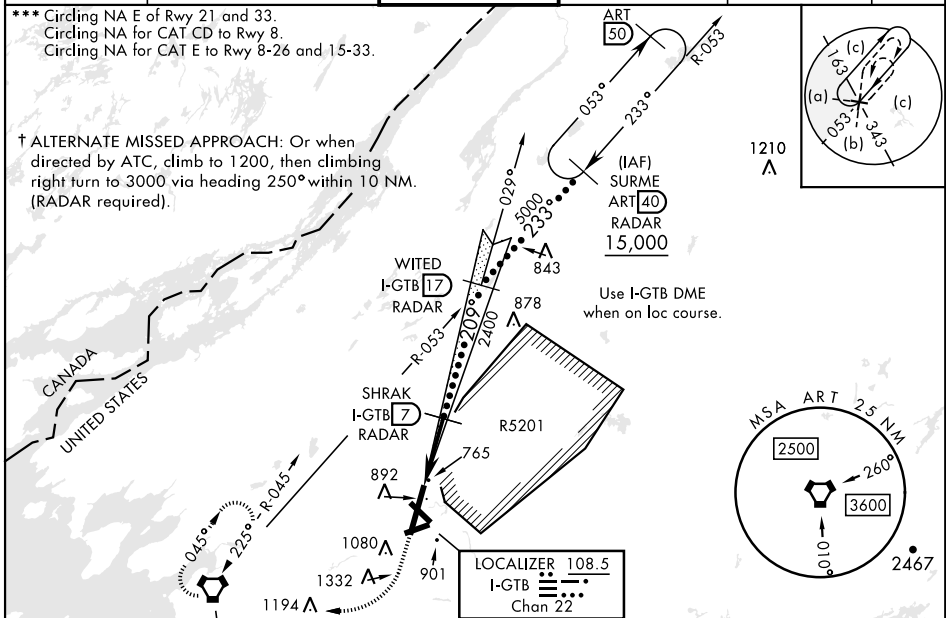
DME or RADAR required.

▼ \* When ALS inop, increase vis to ¾ mile.  
 \*\* When ALS inop, increase CAT C vis to 1 mile, CAT DE vis to 1¼ miles.

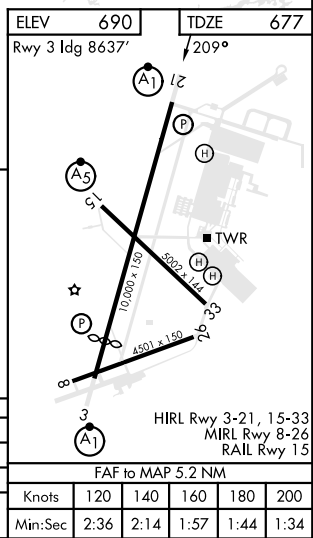
ALSF-1 A1

† MISSED APPROACH: Climb to 1200, then climbing right turn to 5000 direct ART VORTAC and hold. Continue climb in hold to 5000.

ATIS <b>119.525</b>	APP CON <b>124.875 307.125</b>	TOWER <b>118.75 290.25</b>	GND CON <b>123.65 229.8</b>	CLNC DEL <b>121.9</b>	ASR/PAR
------------------------	-----------------------------------	-------------------------------	--------------------------------	--------------------------	---------



CATEGORY	C	D	E
S-ILS 21*	877-½	200	(200-½)
S-LOC 21**	1040-¾	363	(400-¾)
CIRCLING ***	1220-1½	1380-2¼	1640-3
	530 (600-1½)	690 (700-2¼)	950 (1000-3)



# HI-ILS or LOC RWY 21

NE-2, 28 NOV 2024 to 26 DEC 2024

NE-2, 28 NOV 2024 to 26 DEC 2024