

FORT DRUM, NEW YORK

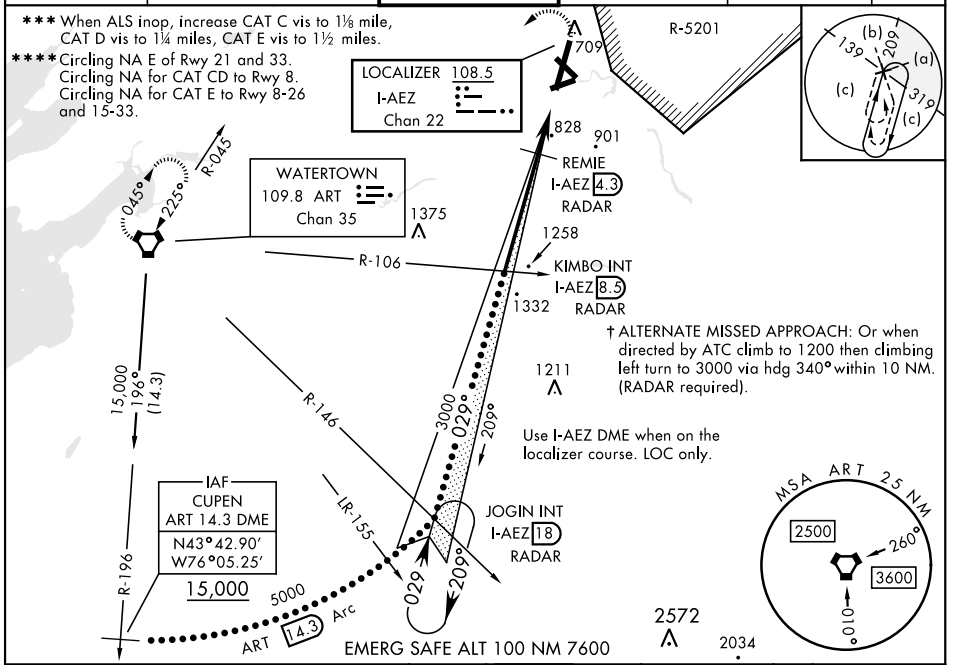
HI-ILS or LOC RWY 3

WHEELER-SACK AAF (KGTB)

LOC/DME I-AEZ 108.5 Chan 22	APCH CRS 029°	Rwy Idg TDZE Arpt Elev 8637 685 690	[USA]
---	-------------------------	---	-------

DME or RADAR required	ALSF-1 	† MISSED APPROACH: Climb to 1200, then climbing left turn to 5000 direct ART VORTAC and hold, continue climb in hold to 5000.
* When ALS inop, increase vis to ½ mile. ** When ALS inop, increase CAT C vis to 2½ miles, CAT D vis to 2¾ miles, CAT E vis to 3 miles.		

ATIS 119.525	APP CON 124.875 307.125	TOWER 118.75 290.25	GND CON 123.65 229.8	CLNC DEL 121.9	ASR/PAR
------------------------	-----------------------------------	-------------------------------	--------------------------------	--------------------------	---------



CUPEN R-196 ART 14.3	JOGIN INT ART R-146 I-AEZ 18 RADAR	KIMBO INT ART R-106 I-AEZ 8.3 RADAR	1200	5000	ART
15,000	5000	3000	1560	1560	1560
GS 3.00° TCH 66	ART 14.3 Arc	029°	4.2 NM	2.7 NM	
CATEGORY	C	D	E		
S-ILS 3*	957-½		272 (300-½)		
S-LOC 3**	1560-2 875 (900-2)	1560-2¼ 875 (900-2¼)	1560-2½ 875 (900-2½)		
CIRCLING ****	1560-2½ 870 (900-2½)	1560-2¾ 870 (900-2¾)	1640-3 950 (1000-3)		
DME MINIMUMS					
S-LOC 3 ***	1080-¾	395 (400-¾)	1080-1 395 (400-1)		
CIRCLING ****	1220-1½ 530 (600-1½)	1380-2¼ 690 (700-2¼)	1640-3 950 (1000-3)		

ELEV 690	TDZE 685
Rwy 3 Idg 8637'	HIRL Rwy 3-21, 15-33
MIRL Rwy 8-26,	RAIL Rwy 15
FAF to MAP 6.9 NM	
Knots	120 140 160 180 200
Min:Sec	3:27 2:57 2:35 2:18 2:04

FORT DRUM, NEW YORK
Amdt 2 20APR23

44°03'N-75°43'W

WHEELER-SACK AAF (KGTB)

HI-ILS or LOC RWY 3

NE-2, 28 NOV 2024 to 26 DEC 2024

NE-2, 28 NOV 2024 to 26 DEC 2024