

FORT DRUM, NEW YORK

# ILS or LOC RWY 21

LOC/DME I-GTB <b>108.5</b> Chan <b>22</b>	APCH CRS <b>209°</b>	Rwy ldg <b>10,000</b> TDZE <b>677</b> Arprt Elev <b>690</b>
---	-------------------------	---

[USA]

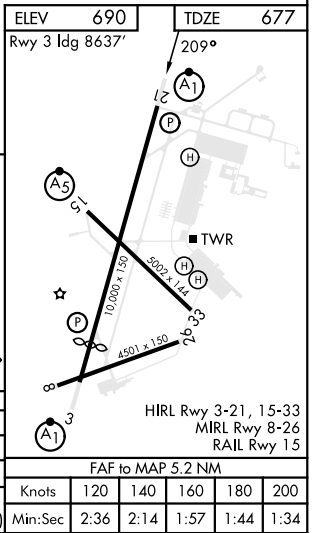
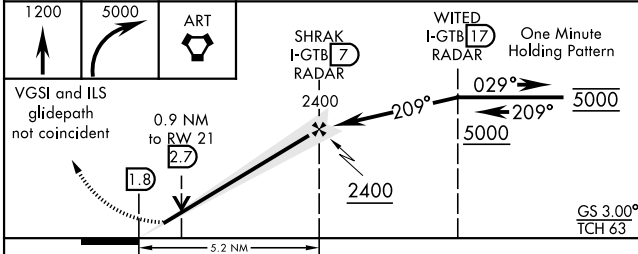
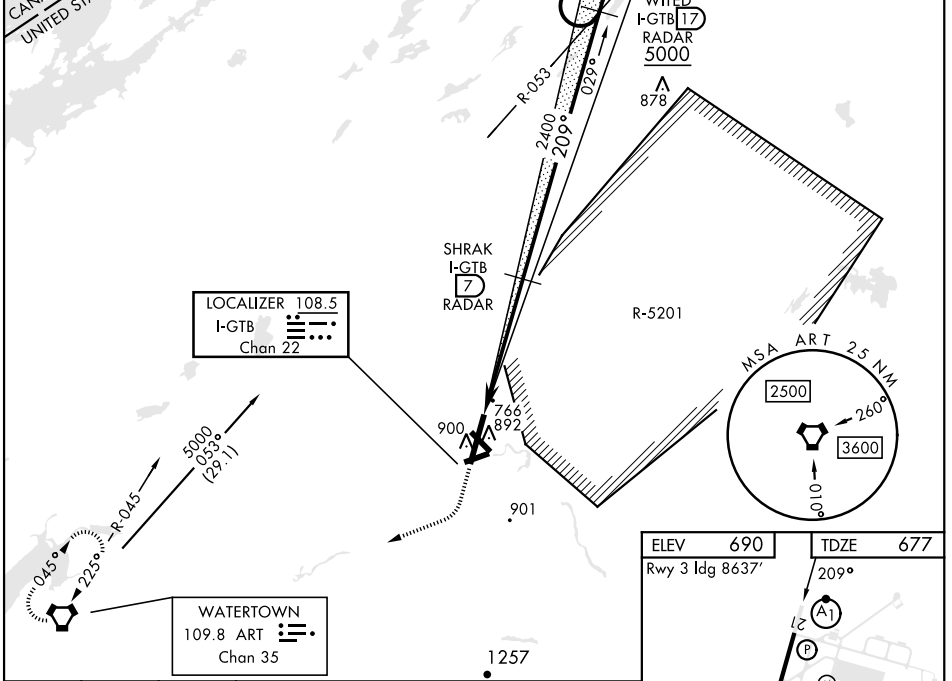
WHEELER-SACK AAF (KGTB)

DME or RADAR required		ALSIF-1 	MISSED APPROACH: Climb to 1200, then climbing right turn to 5000 direct ART VORTAC and hold. Continue climb-in-hold to 5000.
* When ALS inop, increase vis to 3/4 mile. ** When ALS inop, increase CAT ABC vis to 1 mile, CAT DE vis to 1 1/4 miles.			

ATIS <b>119.525</b>	APP CON <b>124.875 307.125</b>	TOWER <b>118.75 290.25</b>	GND CON <b>123.65 229.8</b>	CLNC DEL <b>121.9</b>	ASR/PAR
------------------------	-----------------------------------	-------------------------------	--------------------------------	--------------------------	---------

\*\*\* Circling NA E of Rwy 21 and 33.  
 Circling NA for CAT BCD to Rwy 8.  
 Circling NA for CAT E to Rwy 8-26 and 15-33.

ALTERNATE MISSED APPROACH: When directed by ATC, climb to 1200, then climbing right turn to 3000 via hdg 250° within 10 NM (RADAR required).



CATEGORY	A	B	C	D	E
S-ILS 21*	877-1/2		200	(200-1/2)	
S-LOC 21**	1040-1/2	363 (400-1/2)	1040-3/4	363	(400-3/4)
CIRCLING ***	1200-1 510 (600-1)	1220-1 1/2	530 (600-1 1/2)	1380-2 1/4 690 (700-2 1/4)	1640-3 950 (1000-3)

FORT DRUM, NEW YORK 44° 03'N-75° 43'W WHEELER-SACK AAF (KGTB)

Amtd 3 20APR23

# ILS or LOC RWY 21

NE-2, 28 NOV 2024 to 26 DEC 2024

NE-2, 28 NOV 2024 to 26 DEC 2024