

RNAV (GPS) RWY 33

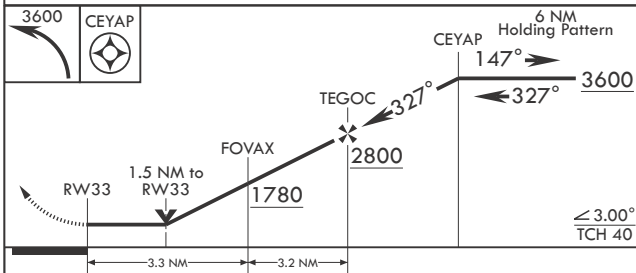
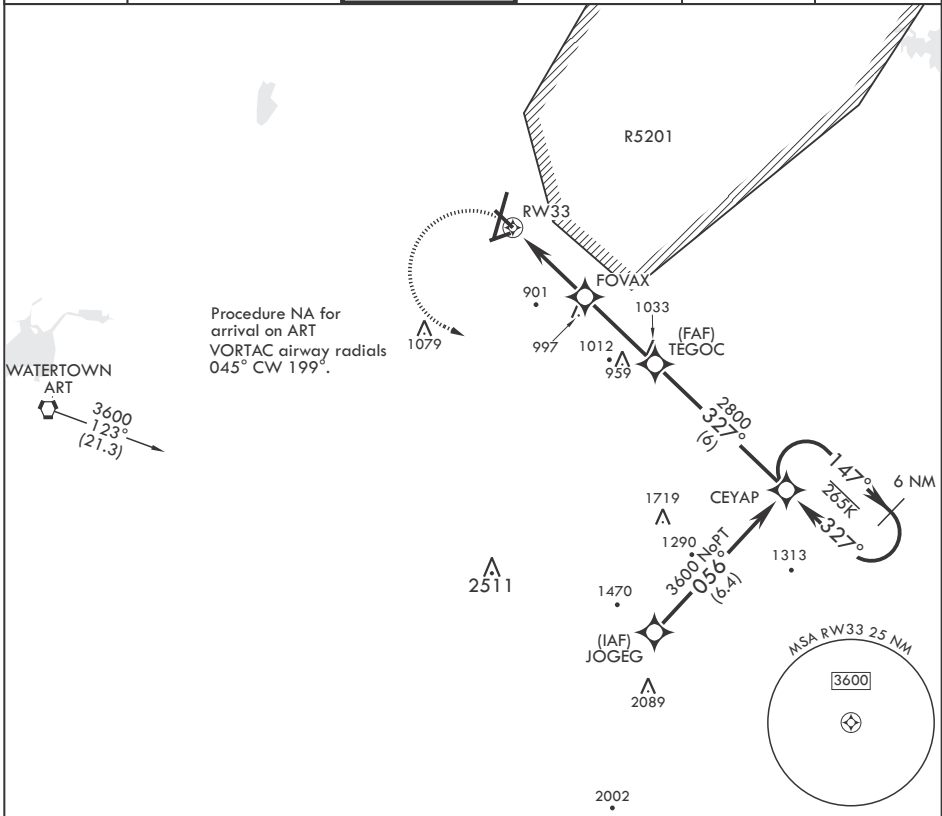
APCH CRS 327°	Rwy Idg 5002
	TDZE 690
	Arprt Elev 690

-(USA)

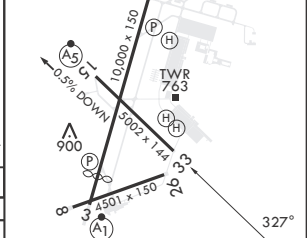
WHEELER SACK AAF (KGTB)

RNP APCH - GPS	MISSED APPROACH: Climbing left turn to 3600 direct CEYAP and hold.
* LNAV visibility reduction by helicopters NA. ** Circling NA for CAT BCD to Rwy 8. Circling NA E of Rwy 21 and 33.	

ATIS 119.525	APP CON/DEP CON 124.875 307.125	TOWER 118.75 290.25	GND CON 123.65 229.8	CLNC DEL 121.9	ASR/PAR
-----------------	------------------------------------	------------------------	-------------------------	-------------------	---------



ELEV 690	TDZE 690
Rwy 3 Idg 8637'	



CATEGORY	A	B	C	D
LNAV MDA*	1200-1 510 (600-1)	1240-1 550 (600-1)	1280-1½ 590 (600-1½)	1460-2½ 770 (800-2½)
CIRCLING**	1200-1 510 (600-1)	1240-1 550 (600-1)	1280-1½ 590 (600-1½)	1460-2½ 770 (800-2½)

HIRL Rwwys 3-21, 15-33
MIRL Rwy 8-26
RAIL Rwy 15

RNAV (GPS) RWY 33

NE-2, 28 NOV 2024 to 26 DEC 2024

NE-2, 28 NOV 2024 to 26 DEC 2024