

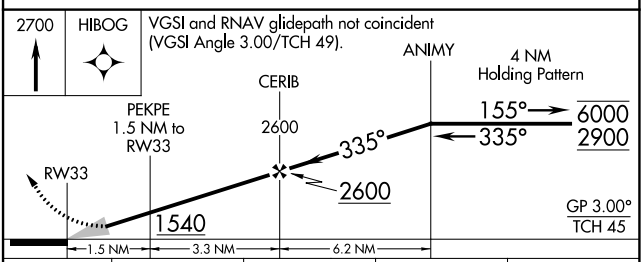
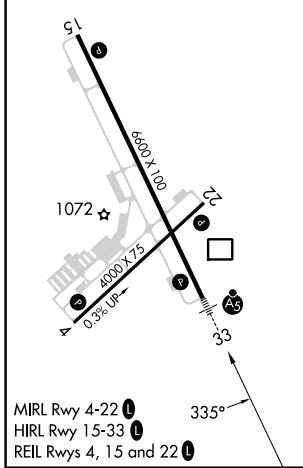
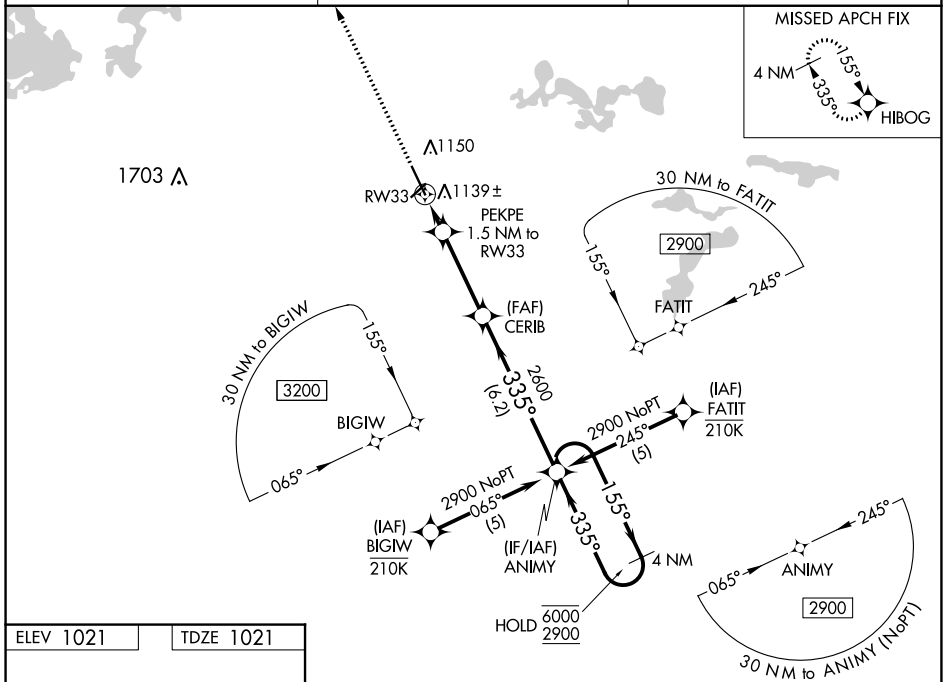
WAAS CH 86315 W33A	APP CRS 335°	Rwy ldg 6600 TDZE 1021 Apt Elev 1021
--	------------------------	---

RNAV (GPS) RWY 33

MANKATO RGNL (MKT)

RNP APCH - GPS. ▼ For uncompensated Baro-VNAV systems, LNAV/VNAV NA below -17°C or above 54°C. For inop ALS, increase LNAV/VNAV all Cats visibility to 7/8 SM and LNAV Cats C and D visibility to 1 SM.	MALSR 	MISSED APPROACH: Climb to 2700 direct HIBOG and hold.
--	-----------	---

AWOS-3PT 118.175	MINNEAPOLIS CENTER 135.0 306.9	UNICOM 122.725 (CTAF)
----------------------------	--	---------------------------------



CATEGORY	A	B	C	D
LPV DA		1221-½	200 (200-½)	
LNAV/VNAV DA		1320-½	299 (300-½)	
LNAV MDA	1400-½	379 (400-½)	1400-5/8	379 (400-5/8)
CIRCLING	1460-1 439 (500-1)	1480-1 459 (500-1)	1600-1½ 579 (600-1½)	1600-2 579 (600-2)

NC-1, 28 NOV 2024 to 26 DEC 2024

NC-1, 28 NOV 2024 to 26 DEC 2024