

WAAS CH <b>82403</b> <b>W14A</b>	APP CRS <b>138°</b>	Rwy Idg TDZE Apt Elev	<b>4650</b> <b>1204</b> <b>1204</b>
--	------------------------	-----------------------------	---

# RNAV (GPS) RWY 14

FREMONT MUNI (F'ET)

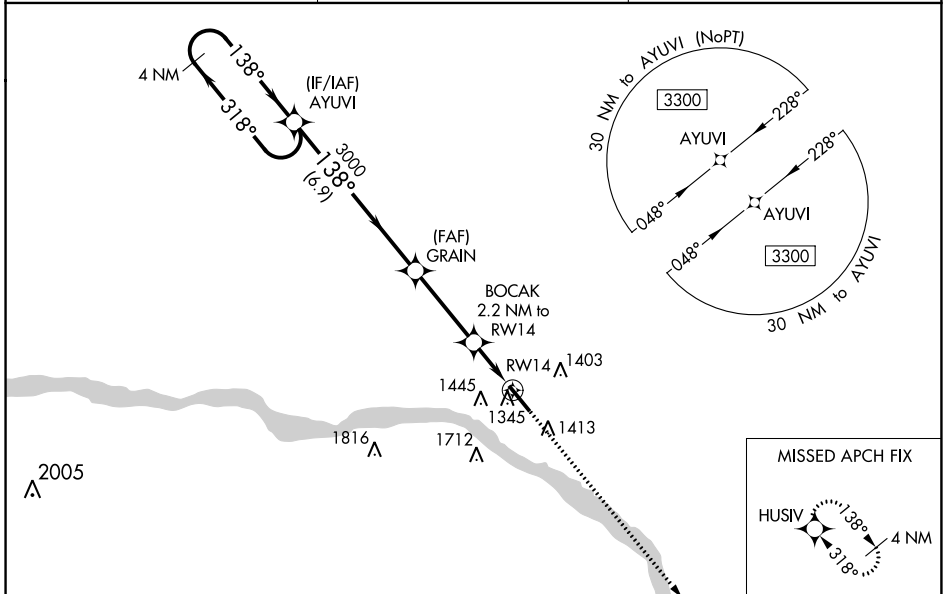
**⚠** For uncompensated Baro-VNAV systems, LNAV/VNAV NA below -17°C (2°F) or above 54°C (130°F). DME/DME RNP-0.3 NA. Helicopter visibility reduction below 1 SM NA. When local altimeter setting not received, use Blair altimeter setting and increase all DA/MDA 60 feet; increase LNAV/VNAV all Cats visibility 1/8 mile, and LNAV Cat C visibility 1/4 mile. Baro-VNAV and VDP NA when using Blair altimeter setting.

**MISSED APPROACH:**  
Climb to 3800 direct HUSIV and hold.

AWOS-3  
**121.275**

OMAHA APP CON  
**120.1 354.05**

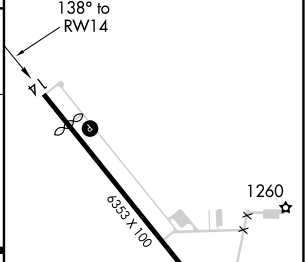
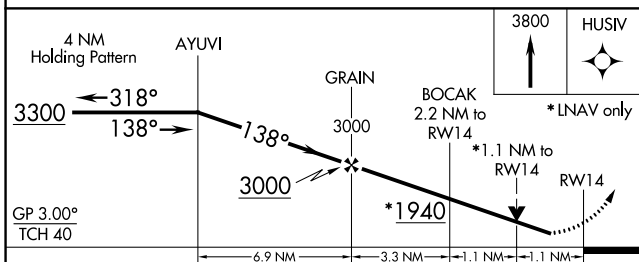
UNICOM  
**122.8 (CTAF) 0**



NC-2, 28 NOV 2024 to 26 DEC 2024

NC-2, 28 NOV 2024 to 26 DEC 2024

ELEV	1204	<b>D</b>	TDZE	1204
------	------	----------	------	------



CATEGORY	A	B	C	D
LPV DA	1454-1	250 (300-1)		NA
LNAV/VNAV DA	1496-1	292 (300-1)		NA
LNAV MDA	1600-1	396 (400-1)	1600-1/8 396 (400-1/8)	NA
<b>C</b> CIRCLING	1760-1	556 (600-1)	2020-2 1/2 816 (900-2 1/2)	NA

REIL Rwy 14 **0**  
MIRL Rwy 14-32