

FREMONT, NEBRASKA

AL-5759 (FAA)

21280

WAAS CH 77635 W32A	APP CRS 318°	Rwy Idg 4650 TDZE 1204 Apt Elev 1204
--	------------------------	---

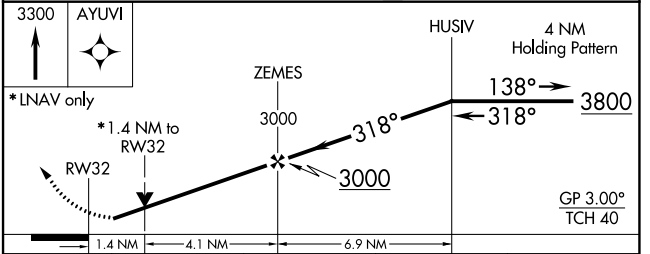
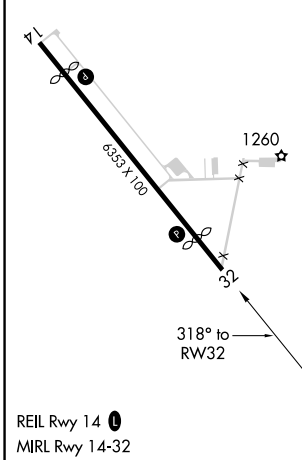
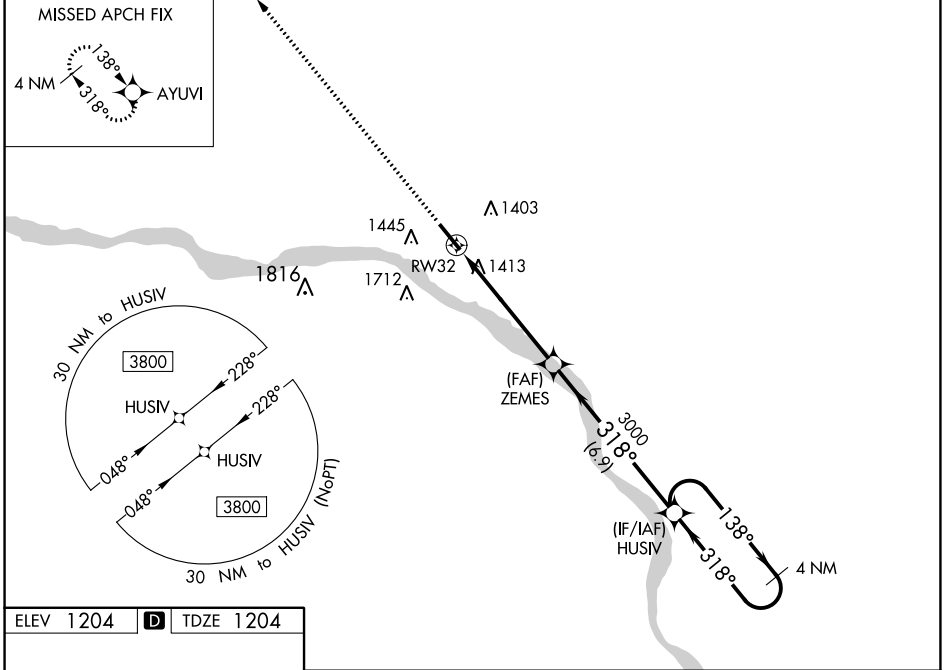
RNAV (GPS) RWY 32

FREMONT MUNI (F'E/T)

▼ For uncompensated Baro-VNAV systems, LNAV/VNAV NA below -17°C (2°F) or above 54°C (130°F).
 ▲ DME/DME RNP-0.3 NA. Helicopter visibility reduction below 1 SM NA. When local altimeter setting not received, use Blair altimeter setting and increase all DA/MDA 60 feet; increase LNAV Cat C visibility ½ mile, and LNAV/VNAV visibility ¼ mile all Cats. Baro-VNAV and VDP NA when using Blair altimeter setting.

MISSED APPROACH: Climb to 3300 direct AYUVI and hold.

AWOS-3 121.275	OMAHA APP CON 120.1 354.05	UNICOM 122.8 (CTAF) 📞
--------------------------	--------------------------------------	--



CATEGORY	A	B	C	D
LPV DA	1456-1 252 (300-1)			NA
LNAV/VNAV DA	1712-1¾ 508 (600-1¾)			NA
LNAV MDA	1680-1	476 (500-1)	1680-1⅜ 476 (500-1⅜)	NA
C CIRCLING	1760-1	556 (600-1)	2020-2½ 816 (900-2½)	NA

FREMONT, NEBRASKA
 Orig-B 29MAR18

41°27'N-96°31'W

FREMONT MUNI (F'E/T) RNAV (GPS) RWY 32

NC-2, 28 NOV 2024 to 26 DEC 2024

NC-2, 28 NOV 2024 to 26 DEC 2024