

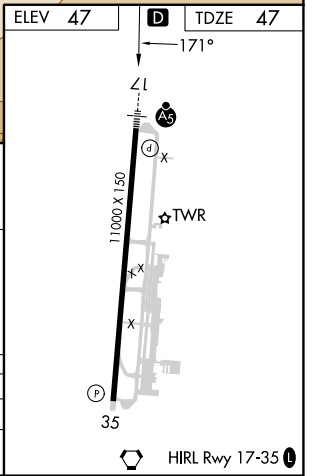
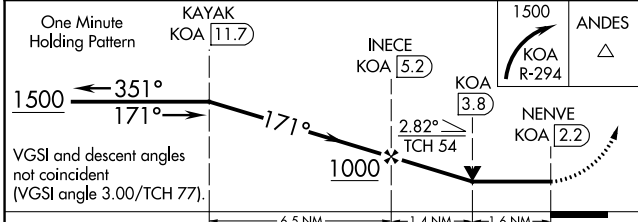
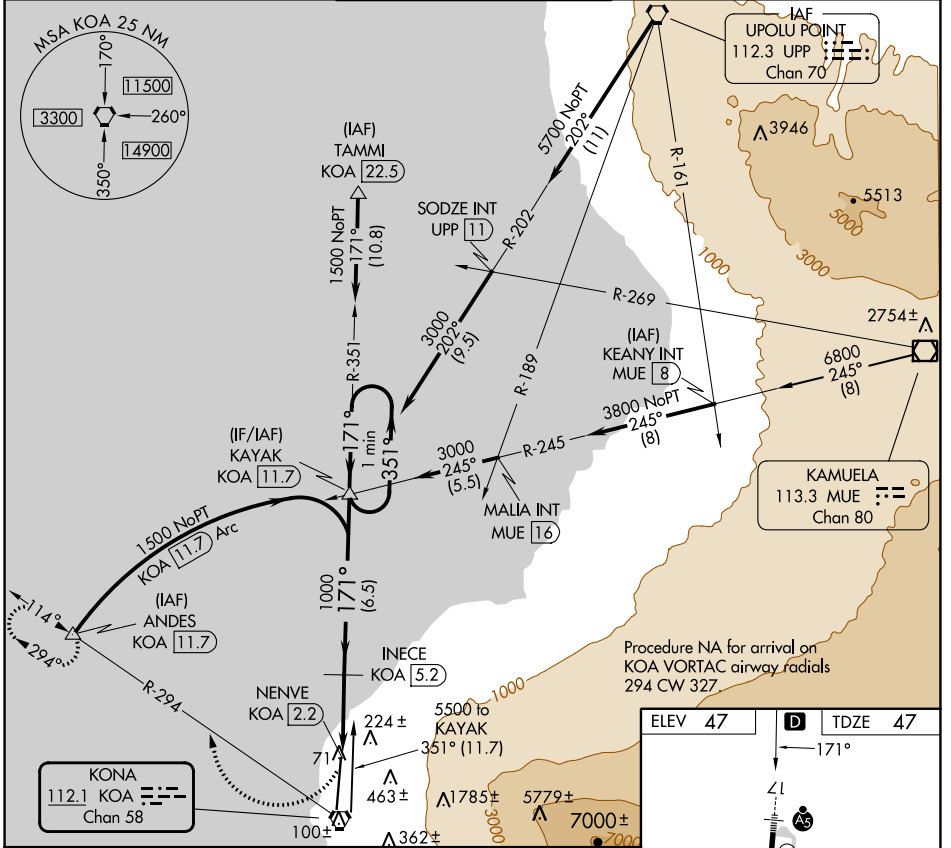
VORTAC KOA <b>112.1</b> Chan <b>58</b>	APP CRS <b>171°</b>	Rwy Idg <b>11000</b> TDZE <b>47</b> Apt Elev <b>47</b>
--	------------------------	--

# VOR or TACAN RWY 17

ELLISON ONIZUKA KONA INTL AT KEAHOLE (KOA) (PHKO)

DME required.		MALSR	MISSED APPROACH: Climbing right turn to 1500 on KOA VORTAC R-294 to ANDES/11.7 DME and hold.
<p>⚠ Circling NA east of Rwy 17-35. For inop ALS, increase S-17 Cat A, B visibility to 1 mile, Cat E visibility to 1½ mile.</p>			

ATIS <b>127.4</b>	HCF CENTER <b>118.45 278.3</b>	KONA TOWER* <b>120.3</b> (CTAF) <b>0 254.3</b>	GND CON <b>121.9</b>	CINC DEL <b>118.6</b>
----------------------	-----------------------------------	---	-------------------------	--------------------------



CATEGORY	A	B	C	D	E
S-17	600-¾ 553 (600-¾)		600-1½ 553 (600-1½)		
<b>C</b> CIRCLING	600-1 553 (600-1)		600-1½ 553 (600-1½)	600-2 553 (600-2)	

PAC, 31 OCT 2024 to 26 DEC 2024

PAC, 31 OCT 2024 to 26 DEC 2024