

APP CRS	Rwy Idg	4100
150°	TDZE	1231
	Apt Elev	1231

RNAV (GPS) RWY 15

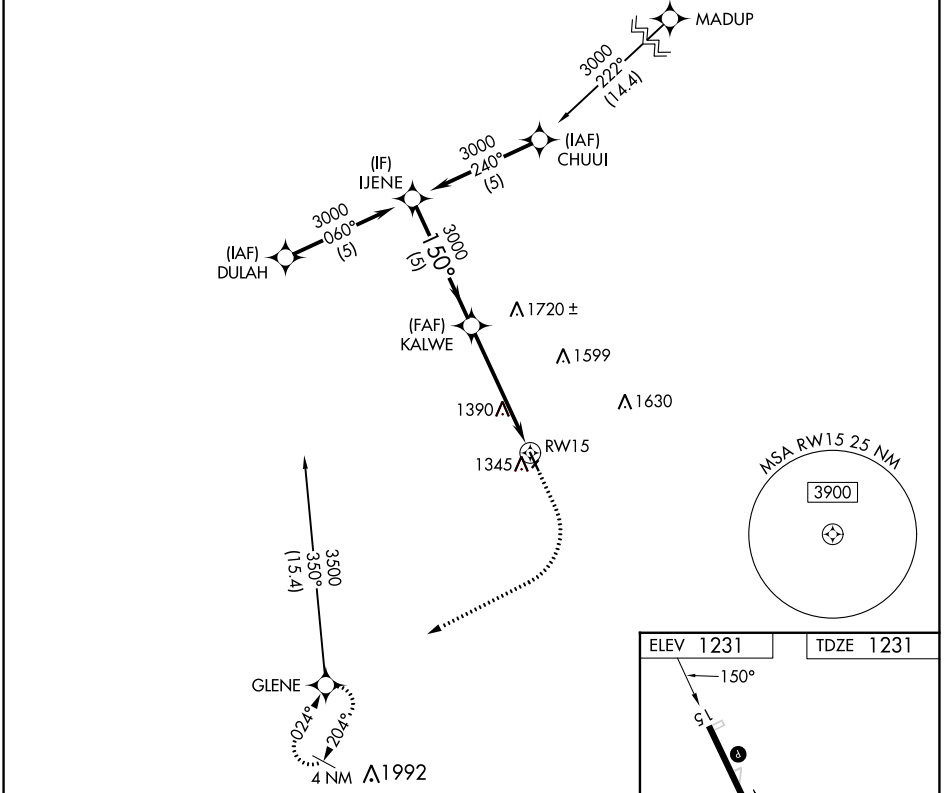
HARLAN MUNI (HNR)

RNP APCH - GPS.

⚠ Circling NA to Rwys 3 and 21. Procedure NA at night.
⚠ NA Rwy 15 helicopter visibility reduction below 1 SM NA.

MISSED APPROACH: Climb to 2000, then climbing right turn to 3600 direct GLENE and hold.

AWOS-3 118.325	OMAHA APP CON 124.5 263.0	UNICOM 122.8 (CTAF) 0
--------------------------	-------------------------------------	---------------------------------



NC-3, 28 NOV 2024 to 26 DEC 2024

NC-3, 28 NOV 2024 to 26 DEC 2024

VGSI and descent angles not coincident (VGSI Angle 3.00/TCH 40).

	2000	3600	GLENE
	↑	↷	✧

The profile view shows the vertical path of the approach. It starts at 3000 feet at the IJENE waypoint, descends to 3000 feet at the KALWE waypoint (5 NM distance). From KALWE, it descends to 2000 feet, then to 3600 feet, and finally to the RWY 15 threshold at 1992 feet (5 NM distance). The vertical curve is defined by a 3.27° angle and a 35-foot threshold crossing height (TCH). A 40-foot threshold crossing height (TCH) is also noted.

CATEGORY	A	B	C	D
LNAV MDA	1860-1	629 (700-1)		NA
CIRCLING	1860-1	629 (700-1)		NA

